

Datasheet for ABIN7146350
anti-SLC25A12 antibody (AA 202-317)[Go to Product page](#)

3 Images

Overview

Quantity:	100 µg
Target:	SLC25A12 (Slc25a12)
Binding Specificity:	AA 202-317
Reactivity:	Human
Host:	Rabbit
Clonality:	Polyclonal
Conjugate:	This SLC25A12 antibody is un-conjugated
Application:	Western Blotting (WB), ELISA, Immunohistochemistry (IHC)

Product Details

Immunogen:	Recombinant Human Calcium-binding mitochondrial carrier protein Aralar1 protein (202-317AA)
Isotype:	IgG
Cross-Reactivity:	Human, Mouse, Rat
Purification:	>95%, Protein G purified

Target Details

Target:	SLC25A12 (Slc25a12)
Alternative Name:	SLC25A12 (Slc25a12 Products)
Background:	Background: Catalyzes the calcium-dependent exchange of cytoplasmic glutamate with

Target Details

mitochondrial aspartate across the mitochondrial inner membrane. May have a function in the urea cycle.

Aliases: AGC1 antibody, Araceli hiperlarga antibody, ARALAR antibody, ARALAR1 antibody, Calcium binding mitochondrial carrier superfamily member antibody, Calcium binding mitochondrial carrier superfamily member Aralar1 antibody, Calcium-binding mitochondrial carrier protein Aralar1 antibody, CMC1_HUMAN antibody, Mitochondrial aspartate glutamate carrier 1 antibody, SLC25A12 antibody, Solute carrier family 25 (aspartate/glutamate carrier) member 12 antibody, Solute carrier family 25 (mitochondrial carrier Aralar) member 12 antibody, Solute carrier family 25 member 12 antibody, solute carrier family 25, member 12 antibody

UniProt: [O75746](#)

Pathways: [Ribonucleoside Biosynthetic Process](#), [Dicarboxylic Acid Transport](#)

Application Details

Application Notes: Recommended dilution: WB:1:500-1:5000, IHC:1:20-1:200,

Restrictions: For Research Use only

Handling

Format: Liquid

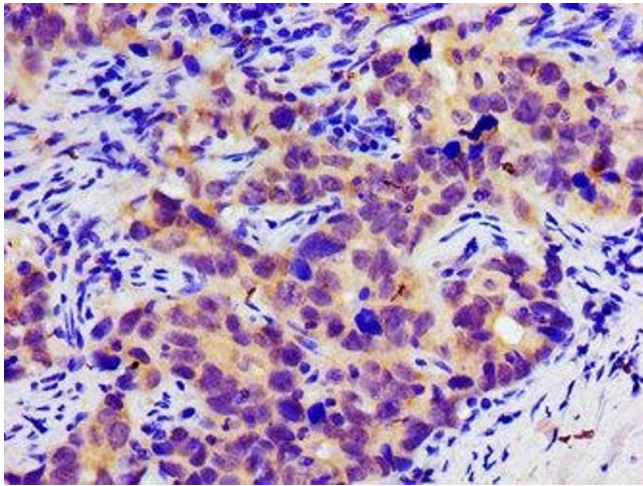
Buffer: Preservative: 0.03 % Proclin 300
Constituents: 50 % Glycerol, 0.01M PBS, pH 7.4

Preservative: ProClin

Precaution of Use: This product contains ProClin: a POISONOUS AND HAZARDOUS SUBSTANCE which should be handled by trained staff only.

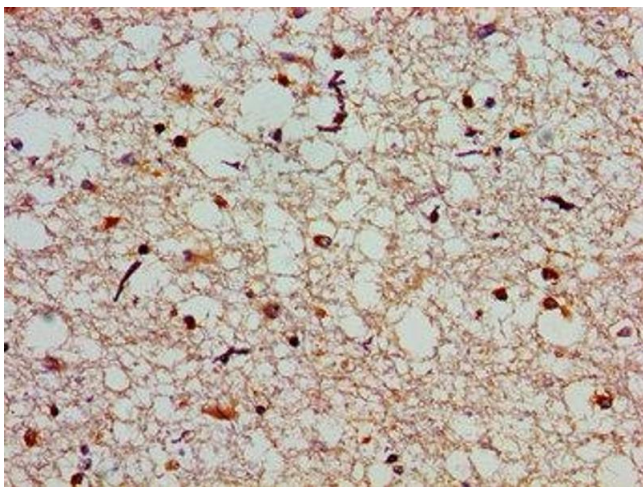
Storage: -20 °C,-80 °C

Storage Comment: Upon receipt, store at -20°C or -80°C. Avoid repeated freeze.



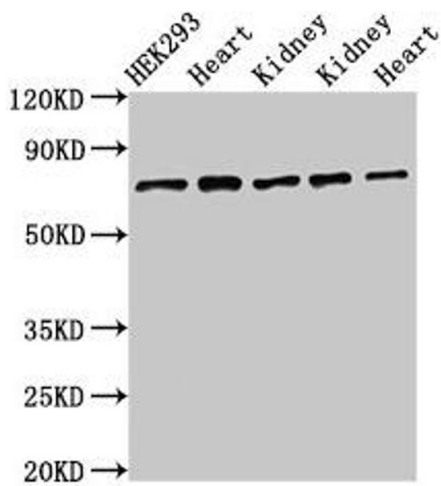
Immunohistochemistry

Image 1. Immunohistochemistry of paraffin-embedded human pancreatic cancer using ABIN7146350 at dilution of 1:100



Immunohistochemistry

Image 2. Immunohistochemistry of paraffin-embedded human brain tissue using ABIN7146350 at dilution of 1:100



Western Blotting

Image 3. Western Blot Positive WB detected in: HEK293 whole cell lysate, Rat heart tissue, Rat kidney tissue, Mouse kidney tissue, Mouse heart tissue All lanes: SLC25A12 antibody at 3 µg/mL Secondary Goat polyclonal to rabbit IgG at 1/50000 dilution Predicted band size: 75, 63 kDa Observed band size: 75 kDa