

Datasheet for ABIN7146356  
**anti-SLC25A24 antibody (AA 1-197)**



[Go to Product page](#)

4 Images

## Overview

Quantity:	100 µg
Target:	SLC25A24
Binding Specificity:	AA 1-197
Reactivity:	Human
Host:	Rabbit
Clonality:	Polyclonal
Conjugate:	This SLC25A24 antibody is un-conjugated
Application:	Western Blotting (WB), ELISA, Immunofluorescence (IF), Immunohistochemistry (IHC)

## Product Details

Immunogen:	Recombinant Human Calcium-binding mitochondrial carrier protein SCaMC-1 protein (1-197AA)
Isotype:	IgG
Cross-Reactivity:	Human, Mouse, Rat
Purification:	>95%, Protein G purified

## Target Details

Target:	SLC25A24
Alternative Name:	SLC25A24 ( <a href="#">SLC25A24 Products</a> )
Background:	Background: Calcium-dependent mitochondrial solute carrier. Mediates the reversible, electroneutral exchange of Mg-ATP or Mg-ADP against phosphate ions, catalyzing the net

## Target Details

uptake or efflux of adenine nucleotides across the mitochondrial inner membrane. Nucleotide transport is inactive when cytosolic calcium levels are low, and is activated by an increase in cytosolic calcium levels. May play a role in protecting cells against oxidative stress-induced cell death, probably by promoting the formation of calcium-phosphate precipitates in the mitochondrial matrix, and thereby buffering calcium levels in the mitochondrial matrix.

Aliases: SLC25A24 antibody, APC1 antibody, MCSC1 antibody, SCAMC1 antibody, Calcium-binding mitochondrial carrier protein SCaMC-1 antibody, Mitochondrial ATP-Mg/Pi carrier protein 1 antibody, Mitochondrial Ca(2+)-dependent solute carrier protein 1 antibody, Small calcium-binding mitochondrial carrier protein 1 antibody, Solute carrier family 25 member 24 antibody

UniProt: [Q6NUK1](#)

## Application Details

Application Notes: Recommended dilution: WB:1:500-1:5000, IHC:1:200-1:500, IF:1:50-1:200,

Restrictions: For Research Use only

## Handling

Format: Liquid

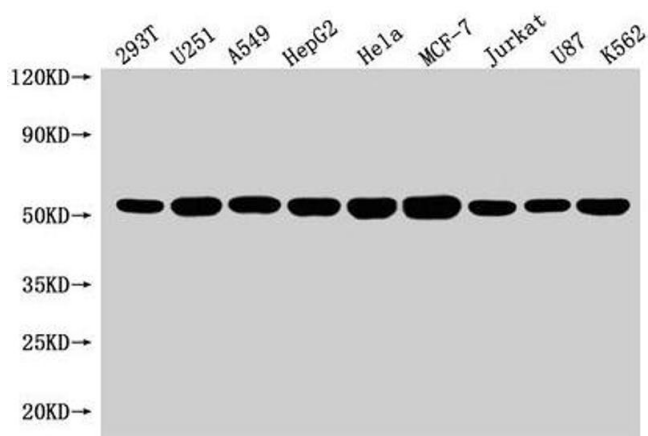
Buffer: Preservative: 0.03 % Proclin 300  
Constituents: 50 % Glycerol, 0.01M PBS, pH 7.4

Preservative: ProClin

Precaution of Use: This product contains ProClin: a POISONOUS AND HAZARDOUS SUBSTANCE which should be handled by trained staff only.

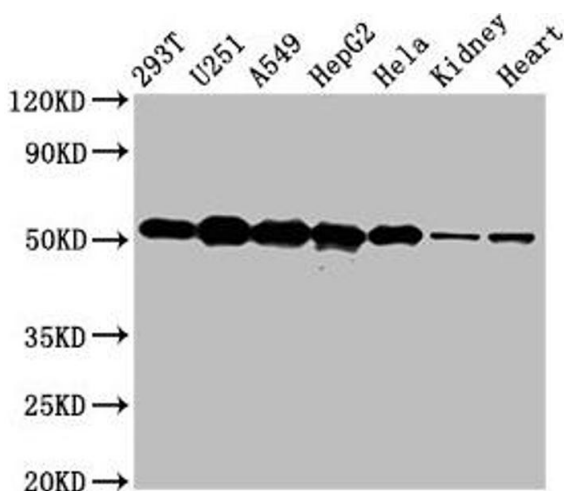
Storage: -20 °C,-80 °C

Storage Comment: Upon receipt, store at -20°C or -80°C. Avoid repeated freeze.



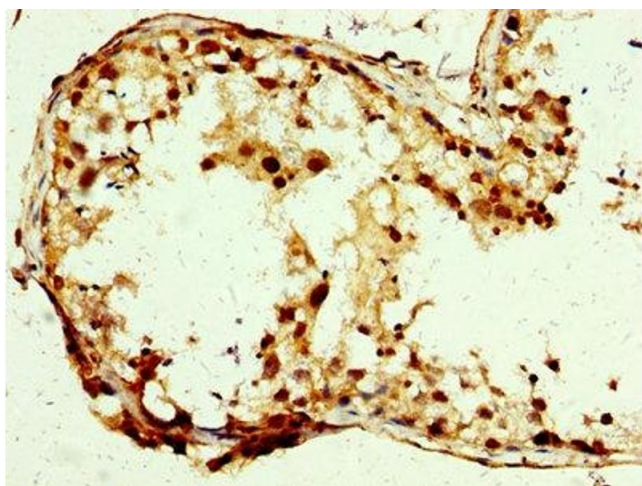
### Western Blotting

**Image 1.** Western Blot Positive WB detected in: 293T whole cell lysate, U251 whole cell lysate, A549 whole cell lysate, HepG2 whole cell lysate, Hela whole cell lysate, MCF-7 whole cell lysate, Jurkat whole cell lysate, U87 whole cell lysate, K562 whole cell lysate. All lanes: SLC25A24 antibody at 1:1500. Secondary Goat polyclonal to rabbit IgG at 1/50000 dilution. Predicted band size: 54, 52 kDa. Observed band size: 54 kDa.



### Western Blotting

**Image 2.** Western Blot Positive WB detected in: 293T whole cell lysate, U251 whole cell lysate, A549 whole cell lysate, HepG2 whole cell lysate, Hela whole cell lysate, Rat kidney tissue, Mouse heart tissue. All lanes: SLC25A24 antibody at 5 µg/mL. Secondary Goat polyclonal to rabbit IgG at 1/50000 dilution. Predicted band size: 54, 52 kDa. Observed band size: 54 kDa.



### Immunohistochemistry

**Image 3.** IHC image of ABIN7146356 diluted at 1:250 and staining in paraffin-embedded human testis tissue performed on a Leica Bond™ system. After dewaxing and hydration, antigen retrieval was mediated by high pressure in a citrate buffer (pH 6.0). Section was blocked with 10% normal goat serum 30min at RT. Then primary antibody (1% BSA) was incubated at 4°C overnight. The primary is detected by a biotinylated secondary antibody and visualized using an HRP conjugated SP system.

Please check the [product details page](#) for more images. Overall 4 images are available for ABIN7146356.