

Datasheet for ABIN7146360  
**anti-SLC25A25 antibody (AA 1-189)**[Go to Product page](#)

## 3 Images

## Overview

Quantity:	100 µg
Target:	SLC25A25
Binding Specificity:	AA 1-189
Reactivity:	Human
Host:	Rabbit
Clonality:	Polyclonal
Conjugate:	This SLC25A25 antibody is un-conjugated
Application:	Western Blotting (WB), ELISA, Immunohistochemistry (IHC), Immunofluorescence (IF)

## Product Details

Immunogen:	Recombinant Human Calcium-binding mitochondrial carrier protein SCaMC-2 protein (1-189AA)
Isotype:	IgG
Cross-Reactivity:	Human, Mouse
Purification:	>95%, Protein G purified

## Target Details

Target:	SLC25A25
Alternative Name:	SLC25A25 ( <a href="#">SLC25A25 Products</a> )
Background:	Background: Calcium-dependent mitochondrial solute carrier. Mitochondrial solute carriers shuttle metabolites, nucleotides, and cofactors through the mitochondrial inner membrane.

## Target Details

May act as a ATP-Mg/Pi exchanger that mediates the transport of Mg-ATP in exchange for phosphate, catalyzing the net uptake or efflux of adenine nucleotides into or from the mitochondria.

Aliases: Calcium-binding mitochondrial carrier protein SCaMC-2 antibody, KIAA1896 antibody, MCSC antibody, MGC105138 antibody, MGC119514 antibody, MGC119515 antibody, MGC119516 antibody, MGC119517 antibody, Mitochondrial ATP Mg/Pi carrier antibody, Mitochondrial ATP-Mg/Pi carrier protein 3 antibody, Mitochondrial Ca(2+)-dependent solute carrier protein 3 antibody, Mitochondrial Ca<sup>2+</sup> dependent solute carrier antibody, Mitochondrial calcium-dependent solute carrier antibody, PCSCL antibody, RP11 395P17.4 antibody, SCAMC 2 antibody, SCAMC2 antibody, SCMC2\_HUMAN antibody, Short calcium binding mitochondrial carrier 2 antibody, SLC25A25 antibody, Small calcium binding mitochondrial carrier 2 antibody, Small calcium-binding mitochondrial carrier protein 2 antibody, Solute carrier family 25 (mitochondrial carrier phosphate carrier) member 25 antibody, Solute carrier family 25 member 25 antibody, solute carrier family 25, member 25, isoform a antibody

UniProt: [Q6KCM7](#)

## Application Details

Application Notes: Recommended dilution: WB:1:500-1:2000, IHC:1:20-1:200, IF:1:50-1:200,

Restrictions: For Research Use only

## Handling

Format: Liquid

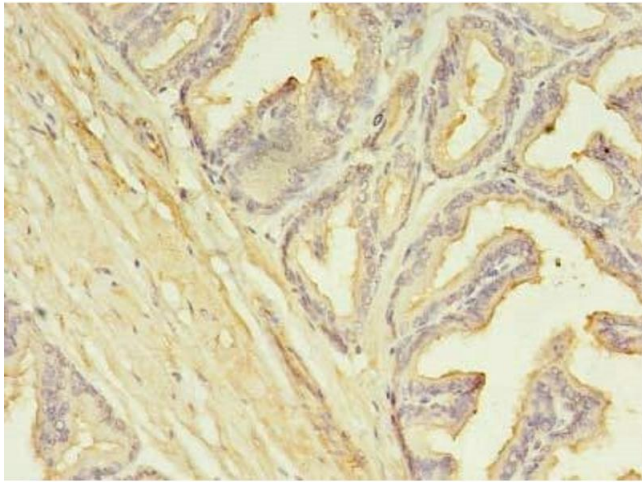
Buffer: Preservative: 0.03 % Proclin 300  
Constituents: 50 % Glycerol, 0.01M PBS, PH 7.4

Preservative: ProClin

Precaution of Use: This product contains ProClin: a POISONOUS AND HAZARDOUS SUBSTANCE which should be handled by trained staff only.

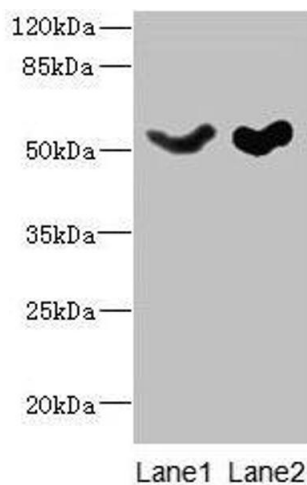
Storage: -20 °C, -80 °C

Storage Comment: Upon receipt, store at -20°C or -80°C. Avoid repeated freeze.



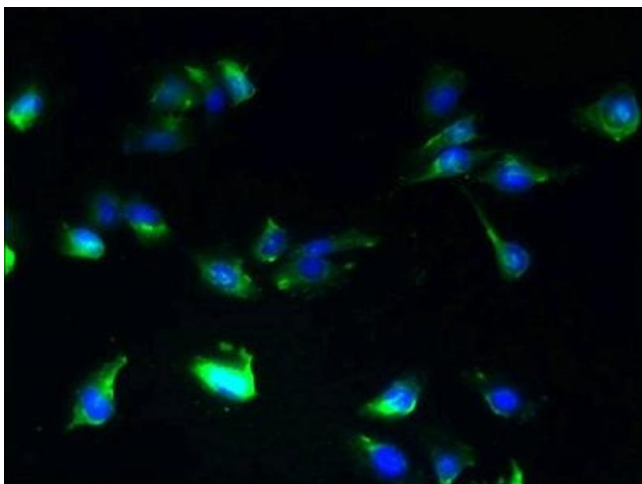
#### Immunohistochemistry

**Image 1.** Immunohistochemistry of paraffin-embedded human prostate cancer using ABIN7146360 at dilution of 1:100



#### Western Blotting

**Image 2.** Western blot All lanes: SLC25A25 antibody at 10  $\mu$ g/mL Lane 1: Mouse liver tissue Lane 2: Mouse brain tissue Secondary Goat polyclonal to rabbit IgG at 1/10000 dilution Predicted band size: 53, 56, 57, 55, 41 kDa Observed band size: 53 kDa



#### Immunofluorescence

**Image 3.** Immunofluorescent analysis of U251 cells using ABIN7146360 at dilution of 1:100 and Alexa Fluor 488-conjugated AffiniPure Goat Anti-Rabbit IgG(H+L)