

Datasheet for ABIN7146364  
**anti-SLC25A23 antibody (AA 1-188)**[Go to Product page](#)

## 1 Image

## Overview

Quantity:	100 µg
Target:	SLC25A23
Binding Specificity:	AA 1-188
Reactivity:	Human
Host:	Rabbit
Clonality:	Polyclonal
Conjugate:	This SLC25A23 antibody is un-conjugated
Application:	ELISA, Western Blotting (WB)

## Product Details

Immunogen:	Recombinant Human Calcium-binding mitochondrial carrier protein SCaMC-3 protein (1-188AA)
Isotype:	IgG
Cross-Reactivity:	Human, Mouse
Purification:	>95%, Protein G purified

## Target Details

Target:	SLC25A23
Alternative Name:	SLC25A23 ( <a href="#">SLC25A23 Products</a> )
Background:	Background: Calcium-dependent mitochondrial solute carrier. Mitochondrial solute carriers shuttle metabolites, nucleotides, and cofactors through the mitochondrial inner membrane

## Target Details

(PubMed:15123600). May act as a ATP-Mg/Pi exchanger that mediates the transport of Mg-ATP in exchange for phosphate, catalyzing the net uptake or efflux of adenine nucleotides into or from the mitochondria (PubMed:15123600). Acts as a regulator of mitochondrial calcium uptake via interaction with MCU and MICU1 (PubMed:24430870).

Aliases: SLC25A23 antibody, APC2 antibody, MCSC2 antibody, SCAMC3 Calcium-binding mitochondrial carrier protein SCaMC-3 antibody, Mitochondrial ATP-Mg/Pi carrier protein 2 antibody, Mitochondrial Ca(2+)-dependent solute carrier protein 2 antibody, Small calcium-binding mitochondrial carrier protein 3 antibody, Solute carrier family 25 member 23 antibody

UniProt: [Q9BV35](#)

## Application Details

Application Notes: Recommended dilution: WB:1:500-1:5000,

Restrictions: For Research Use only

## Handling

Format: Liquid

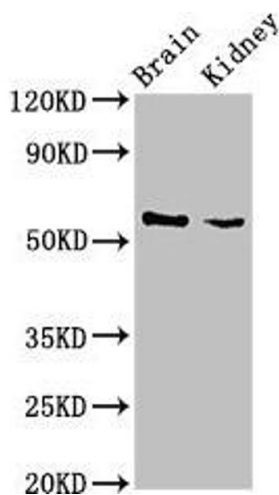
Buffer: Preservative: 0.03 % Proclin 300  
Constituents: 50 % Glycerol, 0.01M PBS, pH 7.4

Preservative: ProClin

Precaution of Use: This product contains ProClin: a POISONOUS AND HAZARDOUS SUBSTANCE which should be handled by trained staff only.

Storage: -20 °C, -80 °C

Storage Comment: Upon receipt, store at -20°C or -80°C. Avoid repeated freeze.



Western Blotting

**Image 1.** Western Blot Positive WB detected in: Mouse brain tissue, Mouse kidney tissue All lanes: SLC25A23 antibody at 3 µg/mL Secondary Goat polyclonal to rabbit IgG at 1/50000 dilution Predicted band size: 53, 50, 55, 49 kDa Observed band size: 53 kDa