



[Go to Product page](#)

Datasheet for ABIN7146368  
**anti-CABP2 antibody (AA 6-172)**

1 Image

### Overview

Quantity:	100 µg
Target:	CABP2
Binding Specificity:	AA 6-172
Reactivity:	Human
Host:	Rabbit
Clonality:	Polyclonal
Conjugate:	This CABP2 antibody is un-conjugated
Application:	ELISA, Immunofluorescence (IF)

### Product Details

Immunogen:	Recombinant Human Calcium-binding protein 2 protein (6-172AA)
Isotype:	IgG
Cross-Reactivity:	Human
Purification:	>95%, Protein G purified

### Target Details

Target:	CABP2
Alternative Name:	CABP2 ( <a href="#">CABP2 Products</a> )
Background:	Background: Golgi apparatus, plasma membrane, calcium ion binding, signal transduction Aliases: CaBP2 antibody, CABP2_HUMAN antibody, Calcium-binding protein 2 antibody

## Target Details

---

UniProt: [Q9NPB3](#)

## Application Details

---

Application Notes: Recommended dilution: IF:1:50-1:200,

Restrictions: For Research Use only

## Handling

---

Format: Liquid

Buffer: Preservative: 0.03 % Proclin 300  
Constituents: 50 % Glycerol, 0.01M PBS, pH 7.4

Preservative: ProClin

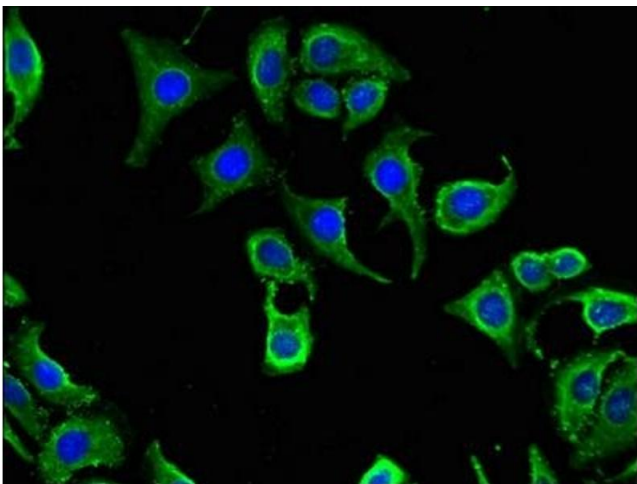
Precaution of Use: This product contains ProClin: a POISONOUS AND HAZARDOUS SUBSTANCE which should be handled by trained staff only.

Storage: -20 °C,-80 °C

Storage Comment: Upon receipt, store at -20°C or -80°C. Avoid repeated freeze.

## Images

---



### Immunofluorescence

**Image 1.** Immunofluorescent analysis of HepG2 cells using ABIN7146368 at dilution of 1:100 and Alexa Fluor 488-conjugated AffiniPure Goat Anti-Rabbit IgG(H+L)