



[Go to Product page](#)

Datasheet for ABIN7146376
anti-CAB39L antibody (AA 1-270)

2 Images

Overview

Quantity:	100 µg
Target:	CAB39L
Binding Specificity:	AA 1-270
Reactivity:	Human
Host:	Rabbit
Clonality:	Polyclonal
Conjugate:	This CAB39L antibody is un-conjugated
Application:	Western Blotting (WB), ELISA, Immunofluorescence (IF)

Product Details

Immunogen:	Recombinant Human Calcium-binding protein 39-like protein (1-270AA)
Isotype:	IgG
Cross-Reactivity:	Human
Purification:	>95%, Protein G purified

Target Details

Target:	CAB39L
Alternative Name:	CAB39L (CAB39L Products)
Background:	Background: Component of a complex that binds and activates STK11/LKB1. In the complex, required to stabilize the interaction between CAB39/MO25 (CAB39/MO25alpha or

Target Details

CAB39L/MO25beta) and STK11/LKB1 (By similarity).

Aliases: Antigen MLAA-34 antibody, bA103J18.3 antibody, CAB39-LIKE PROTEIN antibody, Cab39l antibody, Calcium-binding protein 39-like antibody, CB39L_HUMAN antibody, FLJ12577 antibody, MO25-BETA antibody, Mo25-like protein antibody, MO2L antibody, RP11-103J18.3 antibody, sarcoma antigen NY-SAR-79 antibody, U937-associated antigen antibody

UniProt: [Q9H9S4](#)

Application Details

Application Notes: Recommended dilution: WB:1:1000-1:5000, IF:1:200-1:500,

Restrictions: For Research Use only

Handling

Format: Liquid

Buffer: Preservative: 0.03 % Proclin 300
Constituents: 50 % Glycerol, 0.01M PBS, PH 7.4

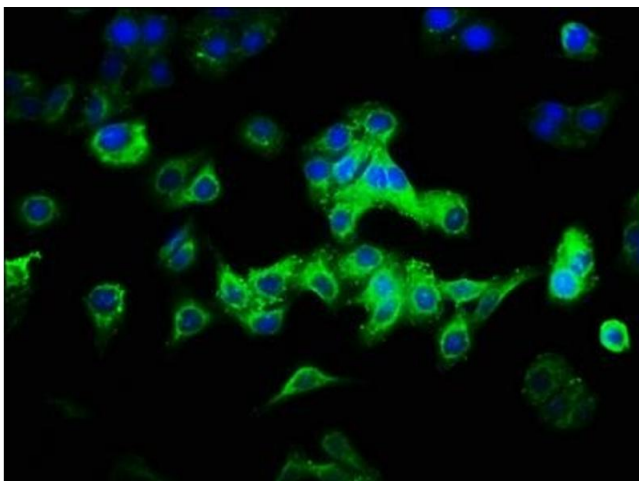
Preservative: ProClin

Precaution of Use: This product contains ProClin: a POISONOUS AND HAZARDOUS SUBSTANCE which should be handled by trained staff only.

Storage: -20 °C,-80 °C

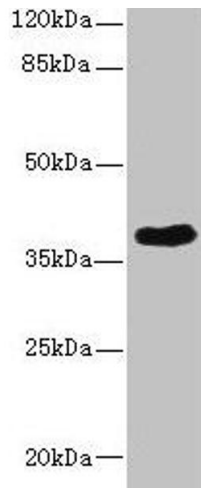
Storage Comment: Upon receipt, store at -20°C or -80°C. Avoid repeated freeze.

Images



Immunofluorescence

Image 1. Immunofluorescence staining of HepG2 cells with ABIN7146376 at 1:333, counter-stained with DAPI. The cells were fixed in 4% formaldehyde, permeabilized using 0.2% Triton X-100 and blocked in 10% normal Goat Serum. The cells were then incubated with the antibody overnight at 4°C. The secondary antibody was Alexa Fluor 488-conjugated AffiniPure Goat Anti-Rabbit IgG(H+L).



Western Blotting

Image 2. Western blot All lanes: CAB39L antibody at 10 μ g/mL + 293T whole cell lysate Secondary Goat polyclonal to rabbit IgG at 1/10000 dilution Predicted band size: 40 kDa Observed band size: 40 kDa