

Datasheet for ABIN7146380  
**anti-CABP4 antibody (AA 1-107)**[Go to Product page](#)

## 2 Images

## Overview

Quantity:	100 µg
Target:	CABP4
Binding Specificity:	AA 1-107
Reactivity:	Human
Host:	Rabbit
Clonality:	Polyclonal
Conjugate:	This CABP4 antibody is un-conjugated
Application:	ELISA, Immunohistochemistry (IHC), Immunofluorescence (IF)

## Product Details

Immunogen:	Recombinant Human Calcium-binding protein 4 protein (1-107AA)
Isotype:	IgG
Cross-Reactivity:	Human
Purification:	>95%, Protein G purified

## Target Details

Target:	CABP4
Alternative Name:	CABP4 ( <a href="#">CABP4 Products</a> )
Background:	Background: Involved in normal synaptic function through regulation of Ca(2+) influx and neurotransmitter release in photoreceptor synaptic terminals and in auditory transmission.

## Target Details

Modulator of CACNA1D and CACNA1F, suppressing the calcium-dependent inactivation and shifting the activation range to more hyperpolarized voltages (By similarity).

Aliases: CABP4 antibody, Calcium-binding protein 4 antibody, CaBP4 antibody

UniProt: [P57796](#)

## Application Details

Application Notes: Recommended dilution: IHC:1:200-1:500, IF:1:50-1:200,

Restrictions: For Research Use only

## Handling

Format: Liquid

Buffer: Preservative: 0.03 % Proclin 300  
Constituents: 50 % Glycerol, 0.01M PBS, pH 7.4

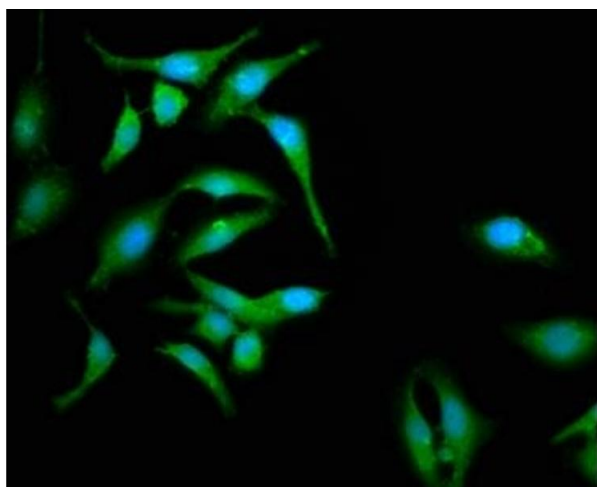
Preservative: ProClin

Precaution of Use: This product contains ProClin: a POISONOUS AND HAZARDOUS SUBSTANCE which should be handled by trained staff only.

Storage: -20 °C,-80 °C

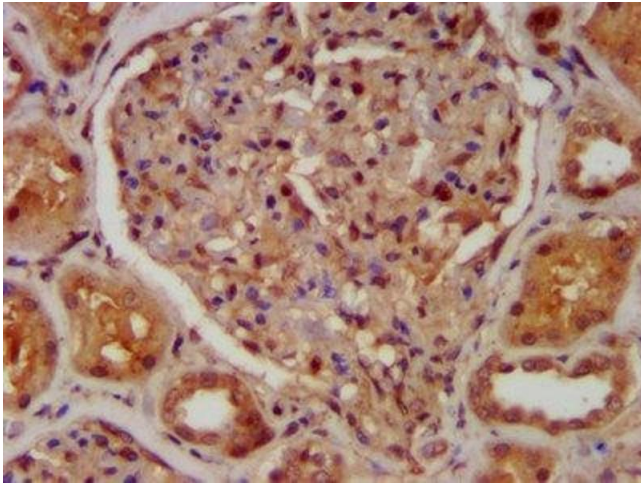
Storage Comment: Upon receipt, store at -20°C or -80°C. Avoid repeated freeze.

## Images



### Immunofluorescence

**Image 1.** Immunofluorescence staining of Hela cells with ABIN7146380 at 1:133, counter-stained with DAPI. The cells were fixed in 4% formaldehyde, permeabilized using 0.2% Triton X-100 and blocked in 10% normal Goat Serum. The cells were then incubated with the antibody overnight at 4°C. The secondary antibody was Alexa Fluor 488-conjugated AffiniPure Goat Anti-Rabbit IgG(H+L).



#### Immunohistochemistry

**Image 2.** IHC image of ABIN7146380 diluted at 1:400 and staining in paraffin-embedded human kidney tissue performed on a Leica Bond<sup>TM</sup> system. After dewaxing and hydration, antigen retrieval was mediated by high pressure in a citrate buffer (pH 6.0). Section was blocked with 10% normal goat serum 30min at RT. Then primary antibody (1% BSA) was incubated at 4°C overnight. The primary is detected by a biotinylated secondary antibody and visualized using an HRP conjugated SP system.