

Datasheet for ABIN7146400
anti-SS18L1 antibody (AA 47-396)[Go to Product page](#)

4 Images

Overview

Quantity:	100 µg
Target:	SS18L1
Binding Specificity:	AA 47-396
Reactivity:	Human
Host:	Rabbit
Clonality:	Polyclonal
Conjugate:	This SS18L1 antibody is un-conjugated
Application:	Western Blotting (WB), ELISA, Immunohistochemistry (IHC)

Product Details

Immunogen:	Recombinant Human Calcium-responsive transactivator protein (47-396AA)
Isotype:	IgG
Cross-Reactivity:	Human, Mouse
Purification:	>95%, Protein G purified

Target Details

Target:	SS18L1
Alternative Name:	SS18L1 (SS18L1 Products)
Background:	Background: Transcriptional activator which is required for calcium-dependent dendritic growth and branching in cortical neurons. Recruits CREB-binding protein (CREBBP) to nuclear bodies.

Target Details

Component of the CREST-BRG1 complex, a multiprotein complex that regulates promoter activation by orchestrating a calcium-dependent release of a repressor complex and a recruitment of an activator complex. In resting neurons, transcription of the c-FOS promoter is inhibited by BRG1-dependent recruitment of a phospho-RB1-HDAC1 repressor complex. Upon calcium influx, RB1 is dephosphorylated by calcineurin, which leads to release of the repressor complex. At the same time, there is increased recruitment of CREBBP to the promoter by a CREST-dependent mechanism, which leads to transcriptional activation. The CREST-BRG1 complex also binds to the NR2B promoter, and activity-dependent induction of NR2B expression involves a release of HDAC1 and recruitment of CREBBP (By similarity).

Aliases: Calcium-responsive transactivator antibody, CREST antibody, CREST_HUMAN antibody, KIAA0693 antibody, LP2261 antibody, MGC26711 antibody, MGC78386 antibody, sarcoma translocation gene on chromosome18like1 antibody, SS18 antibody, SS18-like protein 1 antibody, SS18L1 antibody, SS18L1 nBAF chromatin remodeling complex antibody, SSXT antibody, synovial sarcoma translocation antibody, synovial sarcoma translocation gene on chromosome 18-like 1 antibody, SYT homolog 1 antibody

UniProt: [075177](#)

Application Details

Application Notes: Recommended dilution: WB:1:1000-1:5000, IHC:1:20-1:200,

Restrictions: For Research Use only

Handling

Format: Liquid

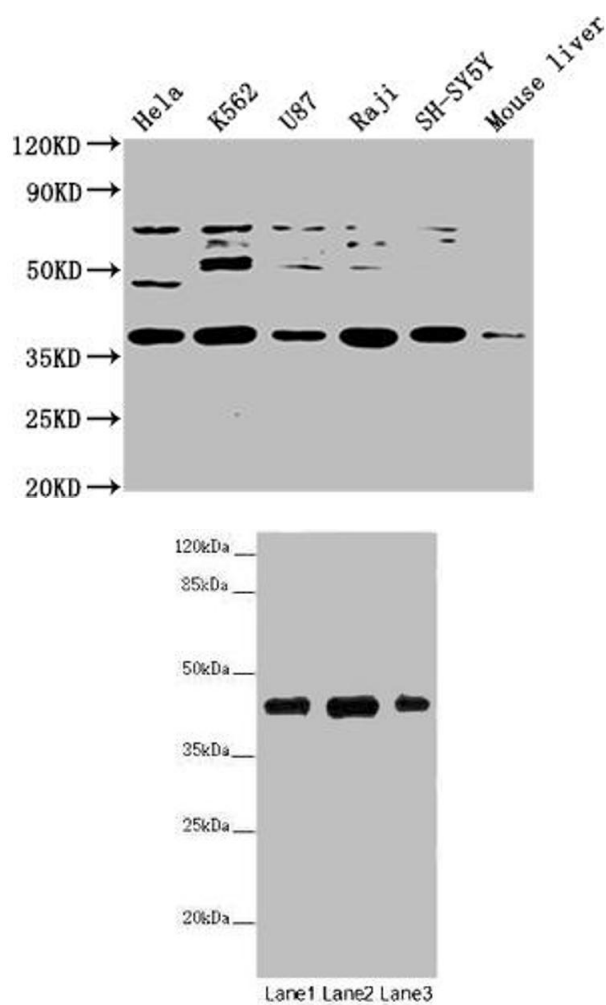
Buffer: Preservative: 0.03 % Proclin 300
Constituents: 50 % Glycerol, 0.01M PBS, PH 7.4

Preservative: ProClin

Precaution of Use: This product contains ProClin: a POISONOUS AND HAZARDOUS SUBSTANCE which should be handled by trained staff only.

Storage: -20 °C,-80 °C

Storage Comment: Upon receipt, store at -20°C or -80°C. Avoid repeated freeze.

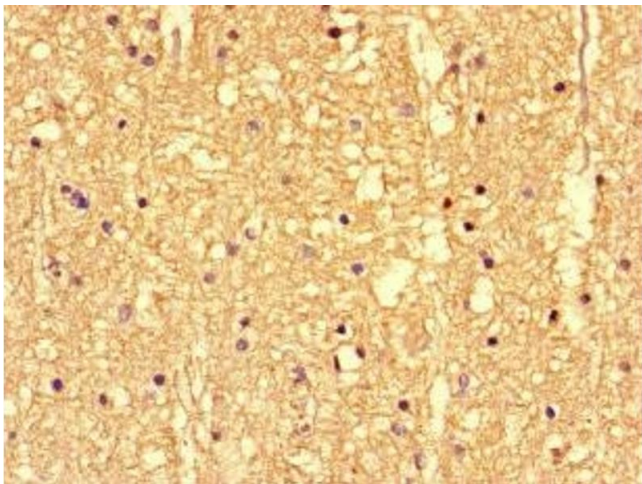


Western Blotting

Image 1. Western Blot Positive WB detected in: Hela whole cell lysate, K562 whole cell lysate, U87 whole cell lysate, Raji whole cell lysate, SH-SY5Y whole cell lysate, Mouse liver tissue All lanes: SS18L1 antibody at 1:2000 Secondary Goat polyclonal to rabbit IgG at 1/50000 dilution Predicted band size: 43, 41, 34, 30, 44 kDa Observed band size: 43 kDa

Western Blotting

Image 2. Western blot All lanes: SS18L1 antibody at 2 μ g/mL Lane 1: Mouse kidney tissue Lane 2: Mouse lung tissue Lane 3: Mouse spleen tissue Secondary Goat polyclonal to rabbit IgG at 1/10000 dilution Predicted band size: 43, 41, 34, 30, 44 kDa Observed band size: 43 kDa



Immunohistochemistry

Image 3. Immunohistochemistry of paraffin-embedded human brain tissue using ABIN7146400 at dilution of 1:100

Please check the [product details page](#) for more images. Overall 4 images are available for ABIN7146400.