

Datasheet for ABIN7146412
anti-PDE1A antibody (AA 1-219)[Go to Product page](#)

1 Image

Overview

Quantity:	100 µL
Target:	PDE1A
Binding Specificity:	AA 1-219
Reactivity:	Human
Host:	Rabbit
Clonality:	Polyclonal
Conjugate:	This PDE1A antibody is un-conjugated
Application:	ELISA, Immunofluorescence (IF)

Product Details

Immunogen:	Recombinant Human Calcium/calmodulin-dependent 3',5'-cyclic nucleotide phosphodiesterase 1A protein (1-219AA)
Isotype:	IgG
Cross-Reactivity:	Human
Purification:	>95%, Protein G purified

Target Details

Target:	PDE1A
Alternative Name:	PDE1A (PDE1A Products)
Background:	Background: Cyclic nucleotide phosphodiesterase with a dual-specificity for the second

Target Details

messengers cAMP and cGMP, which are key regulators of many important physiological processes. Has a higher affinity for cGMP than for cAMP.

Aliases: 3' 5' cyclic nucleotide phosphodiesterase antibody, 5"-cyclic nucleotide phosphodiesterase 1A antibody, 61 kDa Cam PDE antibody, 61 kDa Cam-PDE antibody, Calcium/calmodulin dependent 3' 5' cyclic nucleotide phosphodiesterase 1A antibody, Calcium/Calmodulin stimulated cyclic nucleotide phosphodiesterase antibody, Calcium/calmodulin-dependent 3" antibody, Calmodulin-dependent Phosphodiesterase antibody, Cam PDE 1A antibody, Cam-PDE 1A antibody, CAM-PDE-1A antibody, HCAM 1 antibody, hCam-1 antibody, HCAM1 antibody, HSPDE1A antibody, MGC26303 antibody, PDE 1A antibody, PDE1A antibody, PDE1A_HUMAN antibody, Phosphodiesterase 1A antibody, Phosphodiesterase 1A calmodulin dependent antibody

UniProt: [P54750](#)

Pathways: [Neurotrophin Signaling Pathway](#), [cAMP Metabolic Process](#), [G-protein mediated Events](#), [Interaction of EGFR with phospholipase C-gamma](#)

Application Details

Application Notes: Recommended dilution: IF:1:50-1:200,

Restrictions: For Research Use only

Handling

Format: Liquid

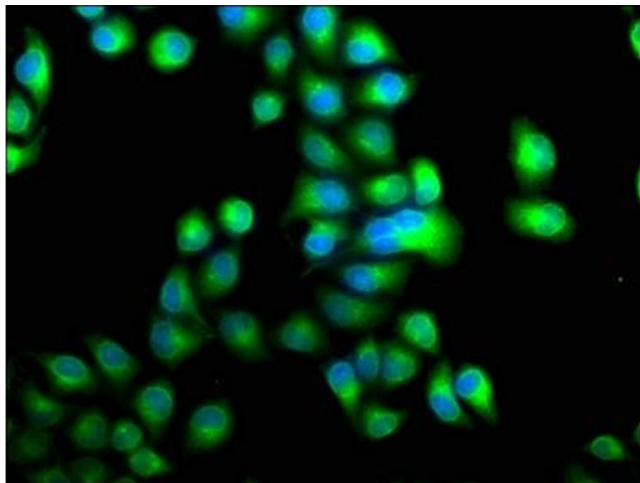
Buffer: Preservative: 0.03 % Proclin 300
Constituents: 50 % Glycerol, 0.01M PBS, pH 7.4

Preservative: ProClin

Precaution of Use: This product contains ProClin: a POISONOUS AND HAZARDOUS SUBSTANCE which should be handled by trained staff only.

Storage: -20 °C,-80 °C

Storage Comment: Upon receipt, store at -20°C or -80°C. Avoid repeated freeze.



Immunofluorescence

Image 1. Immunofluorescence staining of HeLa cells with ABIN7146412 at 1:100, counter-stained with DAPI. The cells were fixed in 4 % formaldehyde, permeabilized using 0.2 % Triton X-100 and blocked in 10 % normal Goat Serum. The cells were then incubated with the antibody overnight at 4 °C. The secondary antibody was Alexa Fluor 488-conjugated AffiniPure Goat Anti-Rabbit IgG(H+L).