

Datasheet for ABIN7146416
anti-PDE1B antibody (AA 1-277)

2 Images

[Go to Product page](#)

Overview

Quantity:	100 µL
Target:	PDE1B
Binding Specificity:	AA 1-277
Reactivity:	Human
Host:	Rabbit
Clonality:	Polyclonal
Conjugate:	This PDE1B antibody is un-conjugated
Application:	Western Blotting (WB), ELISA, Immunofluorescence (IF)

Product Details

Immunogen:	Recombinant Human Calcium/calmodulin-dependent 3',5'-cyclic nucleotide phosphodiesterase 1B protein (1-277AA)
Isotype:	IgG
Cross-Reactivity:	Human
Purification:	Antigen Affinity Purified

Target Details

Target:	PDE1B
Alternative Name:	PDE1B (PDE1B Products)
Background:	Background: Cyclic nucleotide phosphodiesterase with a dual-specificity for the second

Target Details

messengers cAMP and cGMP, which are key regulators of many important physiological processes. Has a preference for cGMP as a substrate.

Aliases: 5"-cyclic nucleotide phosphodiesterase 1B antibody, 63 kDa Cam PDE antibody, 63 kDa Cam-PDE antibody, Calcium/calmodulin dependent 3' 5' cyclic nucleotide Phosphodiesterase 1B antibody, Calcium/calmodulin stimulated cyclic nucleotide phosphodiesterase antibody, Calcium/calmodulin-dependent 3" antibody, Calmodulin stimulated phosphodiesterase PDE1B1 antibody, Cam PDE 1B antibody, Cam PDE1B antibody, Cam-PDE 1B antibody, PDE 1B antibody, PDE1B antibody, PDE1B_HUMAN antibody, PDE1B1 antibody, PDES 1B antibody, PDES1B antibody, Phosphodiesterase 1B antibody, Phosphodiesterase 1B calmodulin dependent antibody, Presumed 63 kDa form of the type 1 cyclic nucleotide phosphodiesterase family known as PDE1B antibody

UniProt: [Q01064](#)

Pathways: [Neurotrophin Signaling Pathway](#), [cAMP Metabolic Process](#), [G-protein mediated Events](#), [Interaction of EGFR with phospholipase C-gamma](#)

Application Details

Application Notes: Recommended dilution: WB:1:500-1:2000, IF:1:50-1:200,

Restrictions: For Research Use only

Handling

Format: Liquid

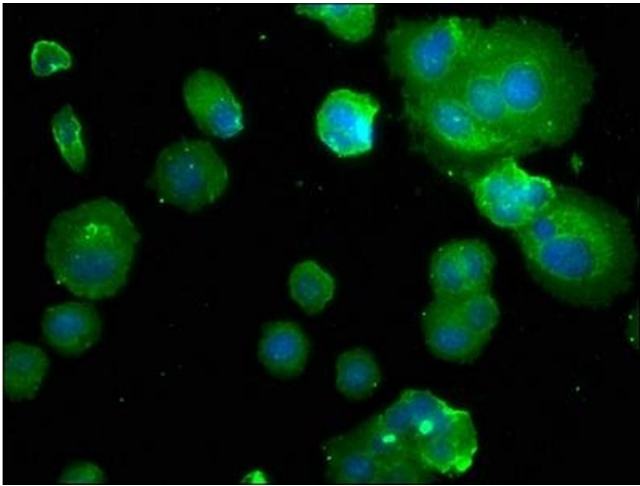
Buffer: Preservative: 0.03 % Proclin 300
Constituents: 50 % Glycerol, 0.01M PBS, pH 7.4

Preservative: ProClin

Precaution of Use: This product contains ProClin: a POISONOUS AND HAZARDOUS SUBSTANCE which should be handled by trained staff only.

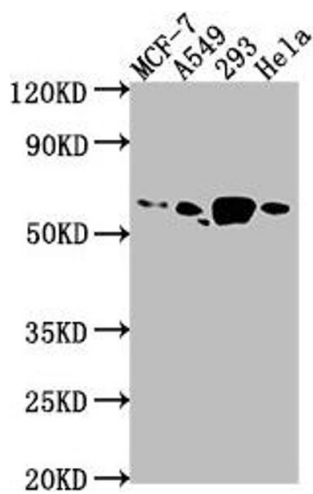
Storage: -20 °C,-80 °C

Storage Comment: Upon receipt, store at -20°C or -80°C. Avoid repeated freeze.



Immunofluorescence

Image 1. Immunofluorescence staining of MCF-7 with ABIN7146416 at 1:50, counter-stained with DAPI. The cells were fixed in 4 % formaldehyde, permeabilized using 0.2 % Triton X-100 and blocked in 10 % normal Goat Serum. The cells were then incubated with the antibody overnight at 4 °C. The secondary antibody was Alexa Fluor 488-conjugated AffiniPure Goat Anti-Rabbit IgG(H+L).



Western Blotting

Image 2. Western Blot Positive WB detected in: MCF-7 whole cell lysate, A549 whole cell lysate, 293 whole cell lysate, HeLa whole cell lysate All lanes: PDE1B antibody at 1:1000 Secondary Goat polyclonal to rabbit IgG at 1/50000 Predicted band size: 62, 60 kDa Observed band size: 62 kDa