

Datasheet for ABIN7146424  
**anti-CAMKK2 antibody (AA 5-148)**[Go to Product page](#)

## 1 Image

## Overview

Quantity:	100 µg
Target:	CAMKK2
Binding Specificity:	AA 5-148
Reactivity:	Human
Host:	Rabbit
Clonality:	Polyclonal
Conjugate:	This CAMKK2 antibody is un-conjugated
Application:	ELISA, Immunohistochemistry (IHC)

## Product Details

Immunogen:	Recombinant Human Calcium/calmodulin-dependent protein kinase kinase 2 protein (5-148AA)
Isotype:	IgG
Cross-Reactivity:	Human
Purification:	>95%, Protein G purified

## Target Details

Target:	CAMKK2
Alternative Name:	CAMKK2 ( <a href="#">CAMKK2 Products</a> )
Background:	Background: Calcium/calmodulin-dependent protein kinase belonging to a proposed calcium-triggered signaling cascade involved in a number of cellular processes. Isoform 1, isoform 2

## Target Details

and isoform 3 phosphorylate CAMK1 and CAMK4. Isoform 3 phosphorylates CAMK1D. Isoform 4, isoform 5 and isoform 6 lacking part of the calmodulin-binding domain are inactive. Efficiently phosphorylates 5'-AMP-activated protein kinase (AMPK) trimer, including that consisting of PRKAA1, PRKAB1 and PRKAG1. This phosphorylation is stimulated in response to Ca(2+) signals (By similarity). Seems to be involved in hippocampal activation of CREB1 (By similarity). May play a role in neurite growth. Isoform 3 may promote neurite elongation, while isoform 1 may promote neurite branching.

Aliases: Calcium/calmodulin dependent protein kinase beta antibody, Calcium/calmodulin dependent protein kinase kinase 2 antibody, Calcium/calmodulin dependent protein kinase kinase 2 beta antibody, Calcium/calmodulin dependent protein kinase kinase beta antibody, Calcium/calmodulin-dependent protein kinase kinase 2 antibody, Calcium/calmodulin-dependent protein kinase kinase beta antibody, CaM kinase kinase beta antibody, CaM KK beta antibody, CaM-kinase kinase 2 antibody, CaM-kinase kinase beta antibody, CaM-KK 2 antibody, CaM-KK beta antibody, CaMKK 2 antibody, CAMKK antibody, CaMKK beta antibody, CAMKK beta protein antibody, Camkk2 antibody, CAMKKB antibody, KKCC2\_HUMAN antibody

UniProt: [Q96RR4](#)

Pathways: [AMPK Signaling](#)

## Application Details

Application Notes: Recommended dilution: IHC:1:20-1:200,

Restrictions: For Research Use only

## Handling

Format: Liquid

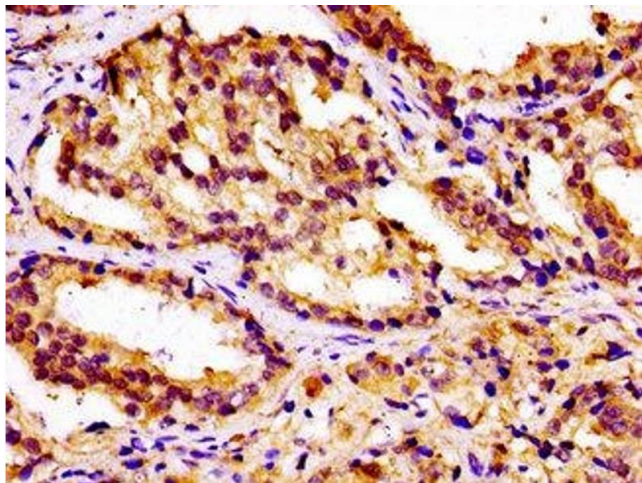
Buffer: Preservative: 0.03 % Proclin 300  
Constituents: 50 % Glycerol, 0.01M PBS, pH 7.4

Preservative: ProClin

Precaution of Use: This product contains ProClin: a POISONOUS AND HAZARDOUS SUBSTANCE which should be handled by trained staff only.

Storage: -20 °C,-80 °C

Storage Comment: Upon receipt, store at -20°C or -80°C. Avoid repeated freeze.



#### Immunohistochemistry

**Image 1.** IHC image of ABIN7146424 diluted at 1:100 and staining in paraffin-embedded human prostate cancer performed on a Leica Bond™ system. After dewaxing and hydration, antigen retrieval was mediated by high pressure in a citrate buffer (pH 6.0). Section was blocked with 10 % normal goat serum 30 min at RT. Then primary antibody (1 % BSA) was incubated at 4 °C overnight. The primary is detected by a biotinylated secondary antibody and visualized using an HRP conjugated SP system.