

Datasheet for ABIN7146458
anti-Calcyphosine 2 antibody (AA 191-274)[Go to Product page](#)

3 Images

Overview

Quantity:	100 µg
Target:	Calcyphosine 2 (CAPS2)
Binding Specificity:	AA 191-274
Reactivity:	Human
Host:	Rabbit
Clonality:	Polyclonal
Conjugate:	This Calcyphosine 2 antibody is un-conjugated
Application:	ELISA, Western Blotting (WB), Immunohistochemistry (IHC)

Product Details

Immunogen:	Recombinant Human Calcyphosin-2 protein (191-274AA)
Isotype:	IgG
Cross-Reactivity:	Human
Purification:	>95%, Protein G purified

Target Details

Target:	Calcyphosine 2 (CAPS2)
Alternative Name:	CAPS2 (CAPS2 Products)
Background:	Background: calcium ion binding, calcium:sodium antiporter activity, calcium ion homeostasis Aliases: Calcyphosin 2 antibody, Calcyphosin-2 antibody, Calcyphosine-2 antibody,

Target Details

Calcyphosine2 antibody, Calcyphosphine 2 antibody, CAPS 2 antibody, CAPS2 antibody, CAYP2_HUMAN antibody, D630005B03Rik antibody, FLJ34520 antibody, OTTHUMP00000202412 antibody, OTTMUSP00000027695 antibody, UG0636c06 antibody

UniProt: [Q9BXY5](#)

Application Details

Application Notes: Recommended dilution: WB:1:500-1:5000, IHC:1:500-1:1000,

Restrictions: For Research Use only

Handling

Format: Liquid

Buffer: Preservative: 0.03 % Proclin 300
Constituents: 50 % Glycerol, 0.01M PBS, pH 7.4

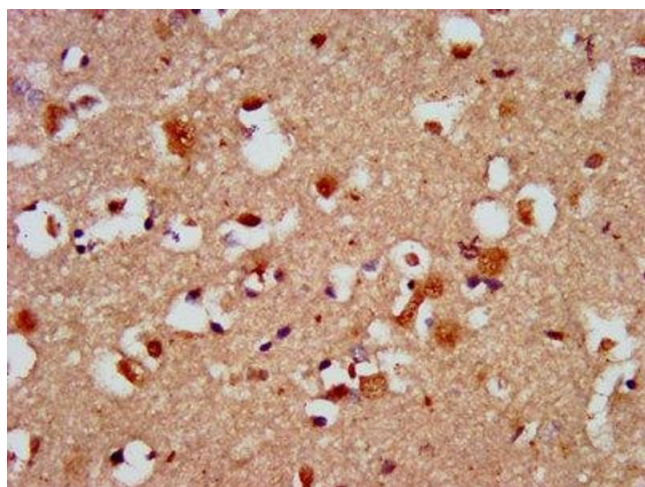
Preservative: ProClin

Precaution of Use: This product contains ProClin: a POISONOUS AND HAZARDOUS SUBSTANCE which should be handled by trained staff only.

Storage: -20 °C,-80 °C

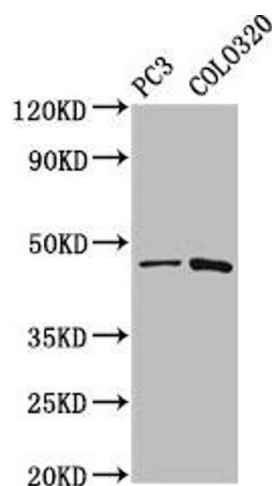
Storage Comment: Upon receipt, store at -20°C or -80°C. Avoid repeated freeze.

Images



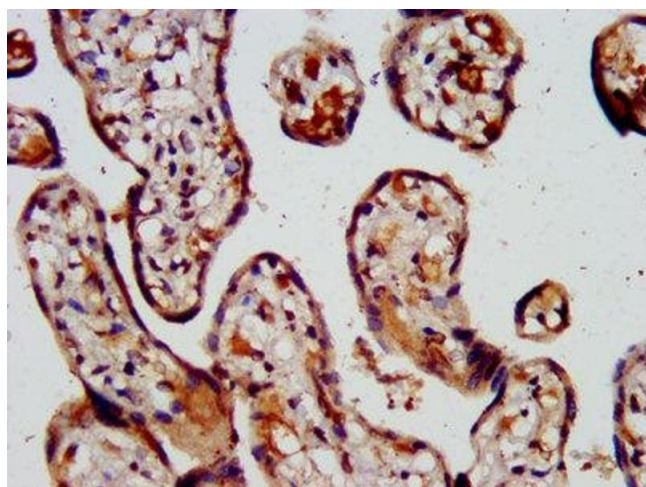
Immunohistochemistry

Image 1. IHC image of ABIN7146458 diluted at 1:500 and staining in paraffin-embedded human brain tissue performed on a Leica Bond™ system. After dewaxing and hydration, antigen retrieval was mediated by high pressure in a citrate buffer (pH 6.0). Section was blocked with 10% normal goat serum 30min at RT. Then primary antibody (1% BSA) was incubated at 4°C overnight. The primary is detected by a biotinylated secondary antibody and visualized using an HRP conjugated SP system.



Western Blotting

Image 2. Western Blot Positive WB detected in: PC-3 whole cell lysate, Colo320 whole cell lysate All lanes: CAPS2 antibody at 5.2 µg/mL Secondary Goat polyclonal to rabbit IgG at 1/50000 dilution Predicted band size: 64, 45, 34 kDa Observed band size: 45 kDa



Immunohistochemistry

Image 3. IHC image of ABIN7146458 diluted at 1:500 and staining in paraffin-embedded human placenta tissue performed on a Leica Bond™ system. After dewaxing and hydration, antigen retrieval was mediated by high pressure in a citrate buffer (pH 6.0). Section was blocked with 10% normal goat serum 30min at RT. Then primary antibody (1% BSA) was incubated at 4°C overnight. The primary is detected by a biotinylated secondary antibody and visualized using an HRP conjugated SP system.