

Datasheet for ABIN7146522

anti-CAPNL1 antibody (Catalytic Subunit)

3 Images

[Go to Product page](#)

Overview

Quantity:	100 µg
Target:	CAPNL1
Binding Specificity:	AA 1-714, Catalytic Subunit
Reactivity:	Human
Host:	Rabbit
Clonality:	Polyclonal
Conjugate:	This CAPNL1 antibody is un-conjugated
Application:	Western Blotting (WB), ELISA, Immunohistochemistry (IHC), Immunofluorescence (IF)

Product Details

Immunogen:	Recombinant Human Calpain-1 catalytic subunit protein (1-714AA)
Isotype:	IgG
Cross-Reactivity:	Human
Purification:	>95%, Protein G purified

Target Details

Target:	CAPNL1
Alternative Name:	CAPN1 (CAPNL1 Products)
Background:	Background: Calcium-regulated non-lysosomal thiol-protease which catalyze limited proteolysis of substrates involved in cytoskeletal remodeling and signal transduction.

Target Details

Aliases: Ca2 activated neutral protease antibody, Calcium activated neutral proteinase antibody, Calcium activated neutral proteinase small subunit antibody, Calcium dependent protease small subunit 1 antibody, Calcium dependent protease small subunit antibody, Calcium-activated neutral proteinase 1 antibody, Calpain 1 antibody, Calpain 1 large subunit antibody, Calpain 1, (mu/I) large subunit antibody, Calpain mu type antibody, Calpain mu-type antibody, Calpain regulatory subunit antibody, Calpain small subunit 1 antibody, Calpain, large polypeptide L1 antibody, Calpain-1 catalytic subunit antibody, Calpain-1 large subunit antibody, CAN1_HUMAN antibody, CANP 1 antibody, CANP antibody, CANP small subunit antibody, CANP1 antibody, CANPL 1 antibody, CANPL1 antibody, CAPN 1 antibody, CAPN1 antibody, Cell proliferation inducing protein 30 antibody, Cell proliferation-inducing gene 30 protein antibody, Micromolar Calpain antibody, Micromolar-calpain antibody, Mu Calpain antibody, muCANP antibody, muCL antibody

UniProt: [P07384](#)

Pathways: [Apoptosis](#)

Application Details

Application Notes: Recommended dilution: WB:1:500-1:2000, IHC:1:20-1:200, IF:1:50-1:500,

Restrictions: For Research Use only

Handling

Format: Liquid

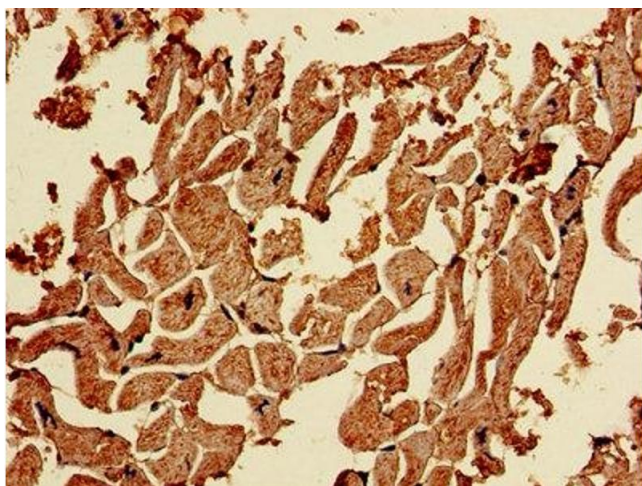
Buffer: Preservative: 0.03 % Proclin 300
Constituents: 50 % Glycerol, 0.01M PBS, PH 7.4

Preservative: ProClin

Precaution of Use: This product contains ProClin: a POISONOUS AND HAZARDOUS SUBSTANCE which should be handled by trained staff only.

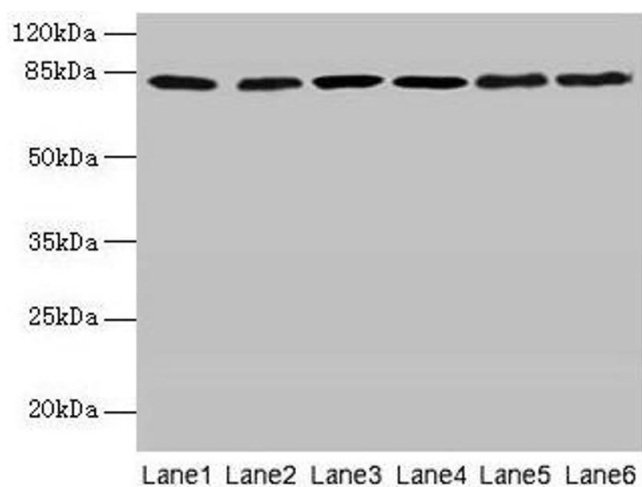
Storage: -20 °C,-80 °C

Storage Comment: Upon receipt, store at -20°C or -80°C. Avoid repeated freeze.



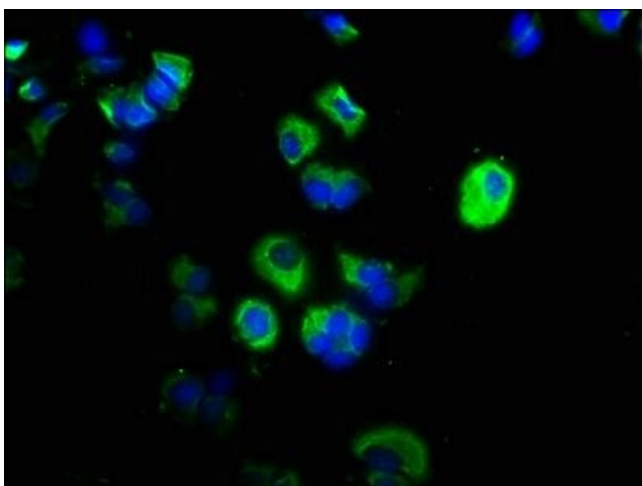
Immunohistochemistry

Image 1. Immunohistochemistry of paraffin-embedded human heart tissue using ABIN7146522 at dilution of 1:100



Western Blotting

Image 2. Western blot All lanes: CAPN1 antibody at 6 μ g/mL Lane 1: A375 whole cell lysate Lane 2: 293T whole cell lysate Lane 3: PC-3 whole cell lysate Lane 4: Jurkat whole cell lysate Lane 5: Hela whole cell lysate Lane 6: A2780 whole cell lysate Secondary Goat polyclonal to rabbit IgG at 1/10000 dilution Predicted band size: 82 kDa Observed band size: 82 kDa



Immunofluorescence

Image 3. Immunofluorescence staining of MCF-7 cells with ABIN7146522 at 1:200, counter-stained with DAPI. The cells were fixed in 4% formaldehyde, permeabilized using 0.2% Triton X-100 and blocked in 10% normal Goat Serum. The cells were then incubated with the antibody overnight at 4°C. The secondary antibody was Alexa Fluor 488-conjugated AffiniPure Goat Anti-Rabbit IgG(H+L).