

Datasheet for ABIN7146540

anti-Calpain 2 antibody (Catalytic Subunit)

5 Images

[Go to Product page](#)

Overview

Quantity:	100 µg
Target:	Calpain 2 (CAPN2)
Binding Specificity:	AA 20-700, Catalytic Subunit
Reactivity:	Human
Host:	Rabbit
Clonality:	Polyclonal
Conjugate:	This Calpain 2 antibody is un-conjugated
Application:	ELISA, Western Blotting (WB), Immunohistochemistry (IHC), Immunofluorescence (IF), Immunoprecipitation (IP)

Product Details

Immunogen:	Recombinant Human Calpain-2 catalytic subunit protein (20-700AA)
Isotype:	IgG
Cross-Reactivity:	Human
Purification:	>95%, Protein G purified

Target Details

Target:	Calpain 2 (CAPN2)
Alternative Name:	CAPN2 (CAPN2 Products)
Background:	Background: Calcium-regulated non-lysosomal thiol-protease which catalyze limited proteolysis

Target Details

of substrates involved in cytoskeletal remodeling and signal transduction.

Aliases: Calcium activated neutral proteinase 2 antibody, Calcium activated neutral proteinase antibody, Calcium-activated neutral protease 2, catalytic subunit antibody, Calcium-activated neutral proteinase 2 antibody, CALP80 antibody, Calpain 2 (m/II) large subunit antibody, Calpain 2 catalytic subunit antibody, Calpain 2 large catalytic subunit antibody, Calpain 2 large subunit antibody, Calpain 2, large [catalytic] subunit antibody, Calpain large polypeptide L2 antibody, Calpain M type antibody, Calpain M-type antibody, Calpain-2 catalytic subunit antibody, Calpain-2 large subunit antibody, Calpain2 antibody, CAN2_HUMAN antibody, CANP 2 antibody, CANP L2 antibody, CANP2 antibody, CANPL 2 antibody, CANPL2 antibody, CANPml antibody, Capa2 antibody, CAPN 2 antibody, CAPN2 antibody, FLJ39928 antibody, M calpain antibody, M calpin antibody, M type antibody, M-calpain antibody, mCANP antibody, Millimolar calpain antibody, Millimolar-calpain antibody

UniProt: [P17655](#)

Application Details

Application Notes: Recommended dilution: WB:1:1000-1:5000, IHC:1:200-1:500, IF:1:50-1:200, IP:1:200-1:2000,

Restrictions: For Research Use only

Handling

Format: Liquid

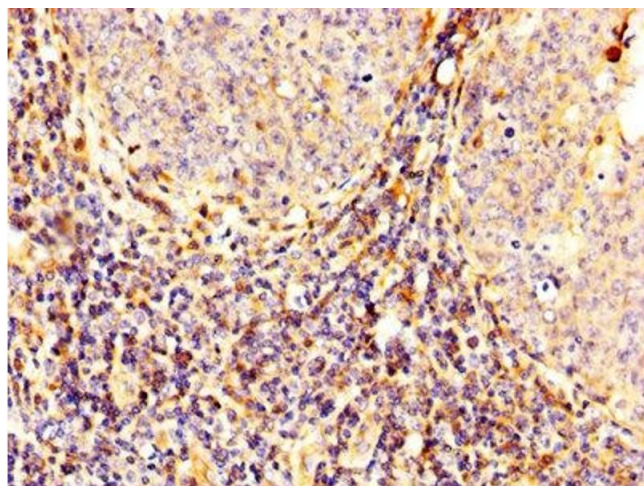
Buffer: Preservative: 0.03 % Proclin 300
Constituents: 50 % Glycerol, 0.01M PBS, PH 7.4

Preservative: ProClin

Precaution of Use: This product contains ProClin: a POISONOUS AND HAZARDOUS SUBSTANCE which should be handled by trained staff only.

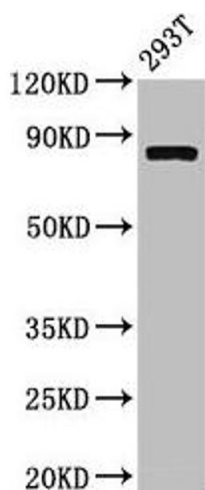
Storage: -20 °C,-80 °C

Storage Comment: Upon receipt, store at -20°C or -80°C. Avoid repeated freeze.



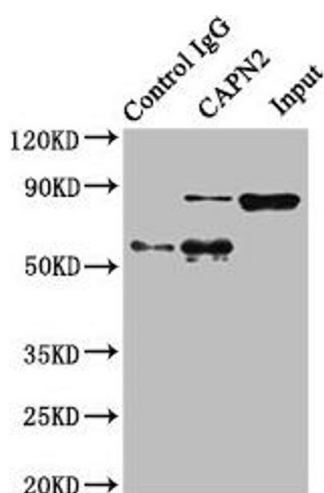
Immunohistochemistry

Image 1. IHC image of ABIN7146540 diluted at 1:300 and staining in paraffin-embedded human tonsil tissue performed on a Leica Bond™ system. After dewaxing and hydration, antigen retrieval was mediated by high pressure in a citrate buffer (pH 6.0). Section was blocked with 10% normal goat serum 30min at RT. Then primary antibody (1% BSA) was incubated at 4°C overnight. The primary is detected by a biotinylated secondary antibody and visualized using an HRP conjugated SP system.



Western Blotting

Image 2. Western Blot Positive WB detected in: 293T whole cell lysate All lanes: CAPN2 antibody at 3.4 µg/mL Secondary Goat polyclonal to rabbit IgG at 1/50000 dilution Predicted band size: 80, 72 kDa Observed band size: 80 kDa



Western Blotting

Image 3. Immunoprecipitating CAPN2 in HeLa whole cell lysate Lane 1: Rabbit control IgG instead of ABIN7146540 in HeLa whole cell lysate. For western blotting, a HRP-conjugated Protein G antibody was used as the secondary antibody (1/2000) Lane 2: ABIN7146540 (8 µg) + HeLa whole cell lysate (500 µg) Lane 3: HeLa whole cell lysate (10 µg)

Please check the [product details page](#) for more images. Overall 5 images are available for ABIN7146540.