

Datasheet for ABIN7146551  
**anti-Calpastatin antibody (AA 1-667)**[Go to Product page](#)

## 4 Images

## Overview

Quantity:	100 µg
Target:	Calpastatin (CAST)
Binding Specificity:	AA 1-667
Reactivity:	Human
Host:	Rabbit
Clonality:	Polyclonal
Conjugate:	This Calpastatin antibody is un-conjugated
Application:	Western Blotting (WB), ELISA, Immunohistochemistry (IHC), Immunofluorescence (IF)

## Product Details

Immunogen:	Recombinant Human Calpastatin protein (1-667AA)
Isotype:	IgG
Cross-Reactivity:	Human, Mouse
Purification:	>95%, Protein G purified

## Target Details

Target:	Calpastatin (CAST)
Alternative Name:	CAST ( <a href="#">CAST Products</a> )
Background:	Background: Specific inhibition of calpain (calcium-dependent cysteine protease). Plays a key role in postmortem tenderization of meat and have been proposed to be involved in muscle

## Target Details

protein degradation in living tissue.

Aliases: BS 17 antibody, Calpain inhibitor antibody, Calpastatin antibody, Cast antibody, Heart type calpastatin antibody, ICAL\_HUMAN antibody, MGC9402 antibody, Sperm BS 17 component antibody, Sperm BS-17 component antibody

UniProt: [P20810](#)

## Application Details

Application Notes: Recommended dilution: WB:1:1000-1:5000, IHC:1:500-1:1000, IF:1:50-1:200,

Restrictions: For Research Use only

## Handling

Format: Liquid

Buffer: Preservative: 0.03 % Proclin 300  
Constituents: 50 % Glycerol, 0.01M PBS, PH 7.4

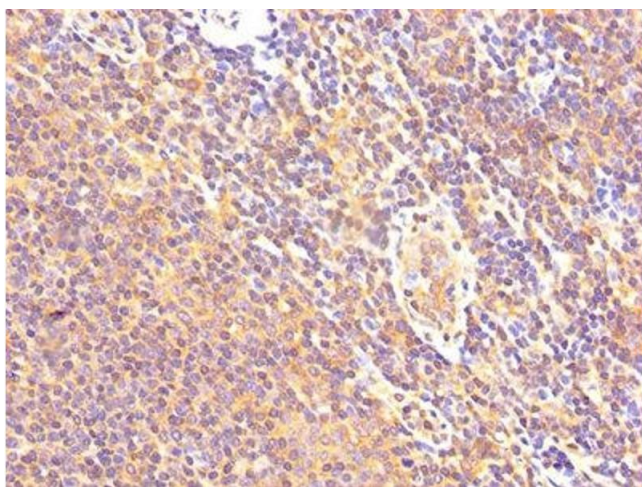
Preservative: ProClin

Precaution of Use: This product contains ProClin: a POISONOUS AND HAZARDOUS SUBSTANCE which should be handled by trained staff only.

Storage: -20 °C,-80 °C

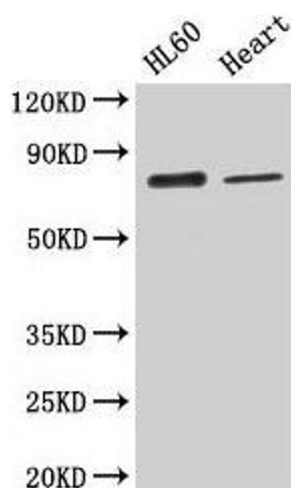
Storage Comment: Upon receipt, store at -20°C or -80°C. Avoid repeated freeze.

## Images



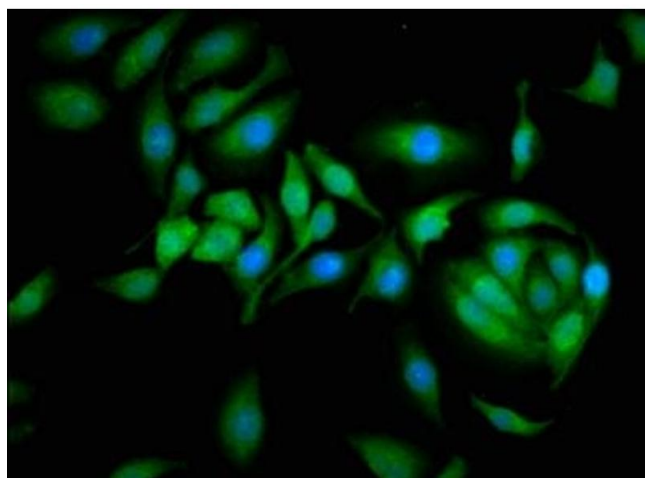
### Immunohistochemistry

**Image 1.** IHC image of ABIN7146551 diluted at 1:500 and staining in paraffin-embedded human lymph node tissue performed on a Leica Bond™ system. After dewaxing and hydration, antigen retrieval was mediated by high pressure in a citrate buffer (pH 6.0). Section was blocked with 10% normal goat serum 30min at RT. Then primary antibody (1% BSA) was incubated at 4°C overnight. The primary is detected by a biotinylated secondary antibody and visualized using an HRP conjugated SP system.



### Western Blotting

**Image 2.** Western Blot Positive WB detected in: HL60 whole cell lysate, Mouse heart tissue All lanes: CAST antibody at 2.6 µg/mL Secondary Goat polyclonal to rabbit IgG at 1/50000 dilution Predicted band size: 77, 76, 64, 72, 82, 85, 83, 75, 81 kDa Observed band size: 77 kDa



### Immunofluorescence

**Image 3.** Immunofluorescence staining of A549 cells with ABIN7146551 at 1:166, counter-stained with DAPI. The cells were fixed in 4% formaldehyde, permeabilized using 0.2% Triton X-100 and blocked in 10% normal Goat Serum. The cells were then incubated with the antibody overnight at 4°C. The secondary antibody was Alexa Fluor 488-conjugated AffiniPure Goat Anti-Rabbit IgG(H+L).

Please check the [product details page](#) for more images. Overall 4 images are available for ABIN7146551.