



[Go to Product page](#)

Datasheet for ABIN7146597
anti-CALU antibody (AA 20-315)

2 Images

Overview

Quantity:	100 µL
Target:	CALU
Binding Specificity:	AA 20-315
Reactivity:	Human
Host:	Rabbit
Clonality:	Polyclonal
Conjugate:	This CALU antibody is un-conjugated
Application:	Immunohistochemistry (IHC), ELISA

Product Details

Immunogen:	Recombinant Human Calumenin protein (20-315AA)
Isotype:	IgG
Cross-Reactivity:	Human
Purification:	Antigen Affinity Purified

Target Details

Target:	CALU
Alternative Name:	CALU (CALU Products)
Background:	Background: Involved in regulation of vitamin K-dependent carboxylation of multiple N-terminal glutamate residues. Seems to inhibit gamma-carboxylase GGCX. Binds 7 calcium ions with a

Target Details

low affinity (By similarity).

Aliases: CALU antibody, CALU_HUMAN antibody, Calumenin 1 antibody, Calumenin 2 antibody, Calumenin antibody, Crocalbin antibody, crocalbin-like protein antibody, FLJ90608 antibody, IEF SSP 9302 antibody, multiple EF-hand protein antibody, OTTHUMP00000212712 antibody, OTTHUMP00000212713 antibody, OTTHUMP00000212714 antibody, OTTHUMP00000212715 antibody

UniProt: [O43852](#)

Application Details

Application Notes: Recommended dilution: IHC:1:20-1:200,

Restrictions: For Research Use only

Handling

Format: Liquid

Buffer: PBS with 0.02 % sodium azide, 50 % glycerol, pH 7.3.

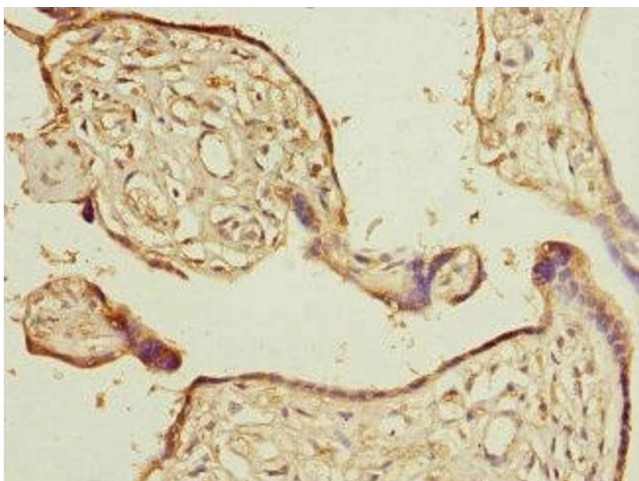
Preservative: Sodium azide

Precaution of Use: This product contains Sodium azide: a POISONOUS AND HAZARDOUS SUBSTANCE which should be handled by trained staff only.

Storage: -20 °C,-80 °C

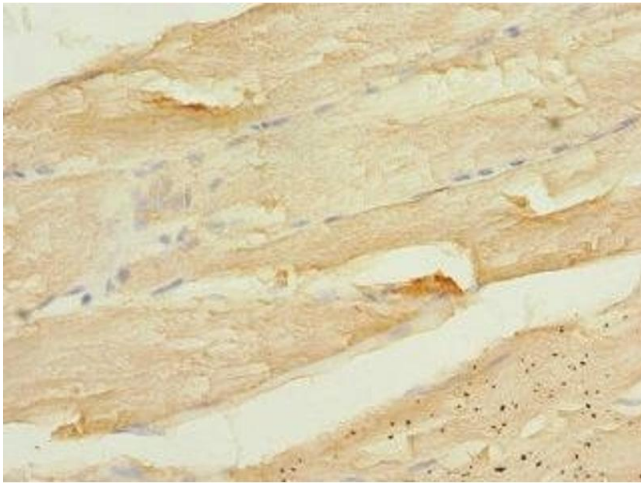
Storage Comment: Upon receipt, store at -20°C or -80°C. Avoid repeated freeze.

Images



Immunohistochemistry

Image 1. Immunohistochemistry of paraffin-embedded human placenta tissue using ABIN7146597 at dilution of 1:100



Immunohistochemistry

Image 2. Immunohistochemistry of paraffin-embedded human skeletal muscle tissue using ABIN7146597 at dilution of 1:100