

Datasheet for ABIN7146610
anti-PKIB antibody (AA 1-77)



[Go to Product page](#)

3 Images

Overview

Quantity:	100 µg
Target:	PKIB
Binding Specificity:	AA 1-77
Reactivity:	Human
Host:	Rabbit
Clonality:	Polyclonal
Conjugate:	This PKIB antibody is un-conjugated
Application:	ELISA, Immunohistochemistry (IHC), Immunofluorescence (IF)

Product Details

Immunogen:	Recombinant Human cAMP-dependent protein kinase inhibitor beta protein (1-77AA)
Isotype:	IgG
Cross-Reactivity:	Human
Purification:	>95%, Protein G purified

Target Details

Target:	PKIB
Alternative Name:	PKIB (PKIB Products)
Background:	Background: Extremely potent competitive inhibitor of cAMP-dependent protein kinase activity, this protein interacts with the catalytic subunit of the enzyme after the cAMP-induced

Target Details

dissociation of its regulatory chains.

Aliases: cAMP dependent protein kinase inhibitor 2 antibody, cAMP-dependent protein kinase inhibitor beta antibody, FLJ23817 antibody, IPKB_HUMAN antibody, OTTHUMP00000017115 antibody, OTTHUMP00000017116 antibody, OTTHUMP00000017117 antibody, PKI-beta antibody, PKIB antibody, PRKACN2 antibody, Protein kinase (cAMP dependent, catalytic) inhibitor beta antibody

UniProt: [Q9C010](#)

Pathways: [Myometrial Relaxation and Contraction](#)

Application Details

Application Notes: Recommended dilution: IHC:1:20-1:200, IF:1:50-1:200,

Restrictions: For Research Use only

Handling

Format: Liquid

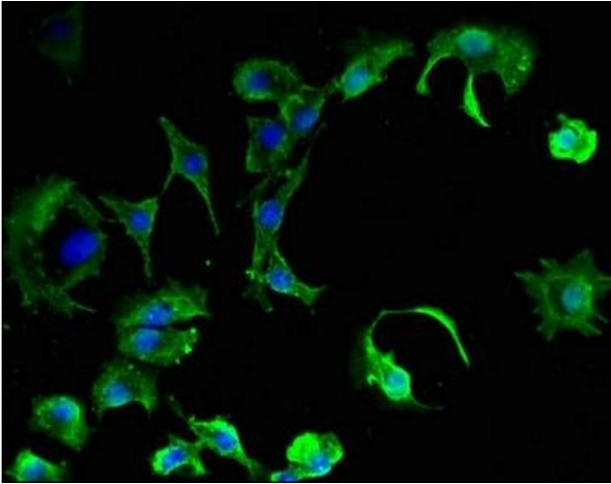
Buffer: Preservative: 0.03 % Proclin 300
Constituents: 50 % Glycerol, 0.01M PBS, pH 7.4

Preservative: ProClin

Precaution of Use: This product contains ProClin: a POISONOUS AND HAZARDOUS SUBSTANCE which should be handled by trained staff only.

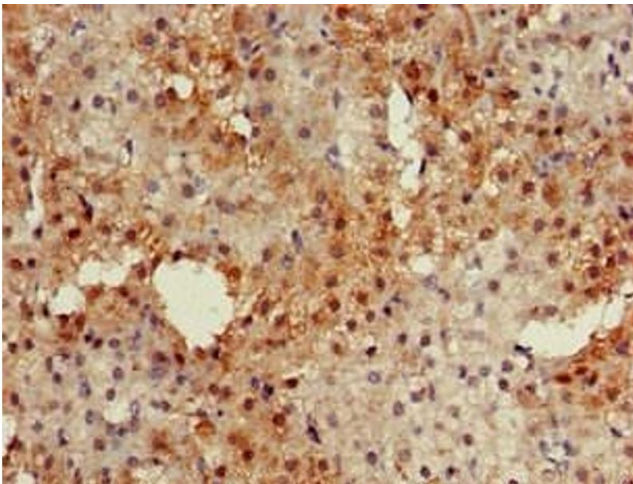
Storage: -20 °C,-80 °C

Storage Comment: Upon receipt, store at -20°C or -80°C. Avoid repeated freeze.



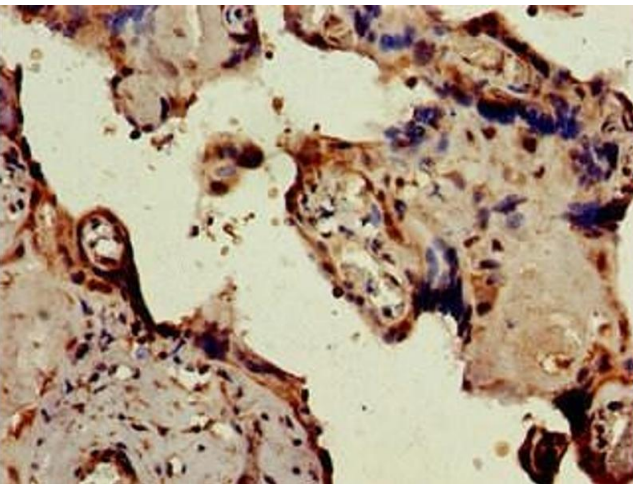
Immunofluorescence

Image 1. Immunofluorescent analysis of MCF-7 cells using ABIN7146610 at dilution of 1:100 and Alexa Fluor 488-conjugated AffiniPure Goat Anti-Rabbit IgG(H+L)



Immunohistochemistry

Image 2. Immunohistochemistry of paraffin-embedded human adrenal gland tissue using ABIN7146610 at dilution of 1:100



Immunohistochemistry

Image 3. Immunohistochemistry of paraffin-embedded human placenta tissue using ABIN7146610 at dilution of 1:100