



Datasheet for ABIN7146619
anti-PRKAR1B antibody (Regulatory Subunit)



[Go to Product page](#)

1 Image

Overview

Quantity:	100 µL
Target:	PRKAR1B
Binding Specificity:	AA 190-290, Regulatory Subunit
Reactivity:	Human
Host:	Rabbit
Clonality:	Polyclonal
Conjugate:	This PRKAR1B antibody is un-conjugated
Application:	ELISA, Immunohistochemistry (IHC)

Product Details

Immunogen:	Recombinant Human cAMP-dependent protein kinase type I-beta regulatory subunit protein (190-290AA)
Isotype:	IgG
Cross-Reactivity:	Human
Purification:	Antigen Affinity Purified

Target Details

Target:	PRKAR1B
Alternative Name:	PRKAR1B (PRKAR1B Products)
Background:	Background: Regulatory subunit of the cAMP-dependent protein kinases involved in cAMP

Target Details

signaling in cells.

Aliases: cAMP dependent protein kinase type I beta regulatory subunit antibody, cAMP-dependent protein kinase type I-beta regulatory subunit antibody, KAP1_HUMAN antibody, PKARI beta antibody, PRKAR 1 antibody, PRKAR 1B antibody, PRKAR1 antibody, Prkar1b antibody, PRKAR1B protein antibody, Protein kinase cAMP dependent regulatory type I beta antibody, Ribeta antibody

UniProt: [P31321](#)

Pathways: [Hedgehog Signaling](#), [EGFR Signaling Pathway](#), [Neurotrophin Signaling Pathway](#), [Myometrial Relaxation and Contraction](#), [G-protein mediated Events](#), [Interaction of EGFR with phospholipase C-gamma](#)

Application Details

Application Notes: Recommended dilution: IHC:1:20-1:200,

Restrictions: For Research Use only

Handling

Format: Liquid

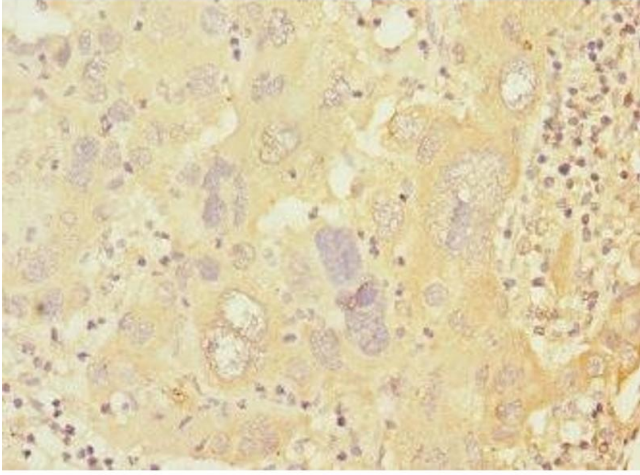
Buffer: PBS with 0.02 % sodium azide, 50 % glycerol, pH 7.3.

Preservative: Sodium azide

Precaution of Use: This product contains Sodium azide: a POISONOUS AND HAZARDOUS SUBSTANCE which should be handled by trained staff only.

Storage: -20 °C,-80 °C

Storage Comment: Upon receipt, store at -20°C or -80°C. Avoid repeated freeze.



Immunohistochemistry

Image 1. Immunohistochemistry of paraffin-embedded human liver cancer using ABIN7146619 at dilution of 1:100