



[Go to Product page](#)

Datasheet for ABIN7146628
anti-CREM antibody (AA 145-321)

2 Images

Overview

Quantity:	100 µg
Target:	CREM
Binding Specificity:	AA 145-321
Reactivity:	Human
Host:	Rabbit
Clonality:	Polyclonal
Conjugate:	This CREM antibody is un-conjugated
Application:	ELISA, Immunohistochemistry (IHC), Immunofluorescence (IF)

Product Details

Immunogen:	Recombinant Human cAMP-responsive element modulator protein (145-321AA)
Isotype:	IgG
Cross-Reactivity:	Human
Purification:	>95%, Protein G purified

Target Details

Target:	CREM
Alternative Name:	CREM (CREM Products)
Background:	Background: Transcriptional regulator that binds the cAMP response element (CRE), a sequence present in many viral and cellular promoters. Isoforms are either transcriptional

Target Details

activators or repressors. Plays a role in spermatogenesis and is involved in spermatid maturation (PubMed:10373550).

Aliases: cAMP response element modulator antibody, cAMP responsive element modulator antibody, cAMP-responsive element modulator antibody, CREM antibody, CREM-2 antibody, CREM_HUMAN antibody, hCREM 2 antibody, hCREM-2 antibody, hCREM2 antibody, ICER antibody, Inducible cAMP early repressor antibody, Inducible cAMP early repressor ICER antibody, MGC111110 antibody, MGC17881 antibody, MGC41893 antibody

UniProt: [Q03060](#)

Pathways: [Retinoic Acid Receptor Signaling Pathway](#)

Application Details

Application Notes: Recommended dilution: IHC:1:200-1:500, IF:1:20-1:200,

Restrictions: For Research Use only

Handling

Format: Liquid

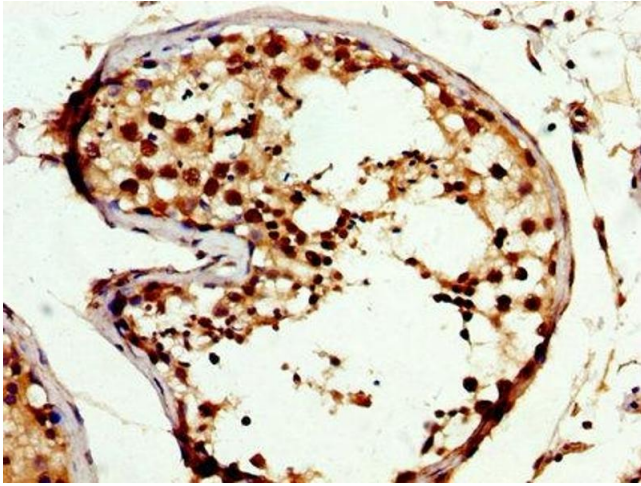
Buffer: Preservative: 0.03 % Proclin 300
Constituents: 50 % Glycerol, 0.01M PBS, pH 7.4

Preservative: ProClin

Precaution of Use: This product contains ProClin: a POISONOUS AND HAZARDOUS SUBSTANCE which should be handled by trained staff only.

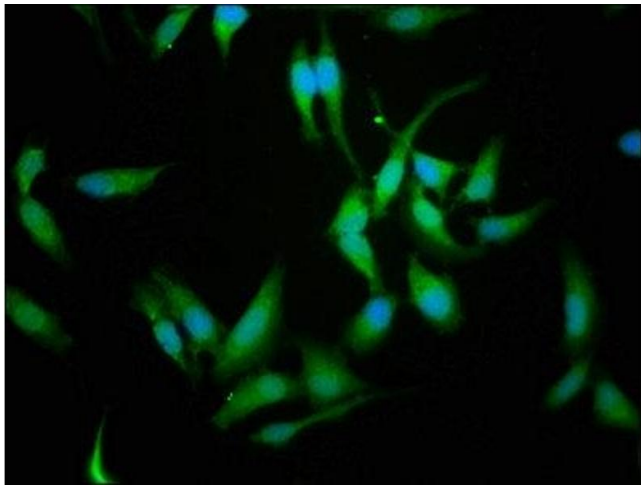
Storage: -20 °C,-80 °C

Storage Comment: Upon receipt, store at -20°C or -80°C. Avoid repeated freeze.



Immunohistochemistry

Image 1. IHC image of ABIN7146628 diluted at 1:300 and staining in paraffin-embedded human testis tissue performed on a Leica Bond™ system. After dewaxing and hydration, antigen retrieval was mediated by high pressure in a citrate buffer (pH 6.0). Section was blocked with 10% normal goat serum 30min at RT. Then primary antibody (1% BSA) was incubated at 4°C overnight. The primary is detected by a biotinylated secondary antibody and visualized using an HRP conjugated SP system.



Immunofluorescence

Image 2. Immunofluorescence staining of HeLa cells with ABIN7146628 at 1:114, counter-stained with DAPI. The cells were fixed in 4% formaldehyde, permeabilized using 0.2% Triton X-100 and blocked in 10% normal Goat Serum. The cells were then incubated with the antibody overnight at 4°C. The secondary antibody was Alexa Fluor 488-conjugated AffiniPure Goat Anti-Rabbit IgG(H+L).