

Datasheet for ABIN7146632
anti-PDE4B antibody (AA 27-215)



[Go to Product page](#)

2 Images

Overview

| | |
|----------------------|--------------------------------------|
| Quantity: | 100 µg |
| Target: | PDE4B |
| Binding Specificity: | AA 27-215 |
| Reactivity: | Human |
| Host: | Rabbit |
| Clonality: | Polyclonal |
| Conjugate: | This PDE4B antibody is un-conjugated |
| Application: | ELISA, Immunohistochemistry (IHC) |

Product Details

| | |
|-------------------|--------------------------------------------------------------------------------------|
| Immunogen: | Recombinant Human cAMP-specific 3',5'-cyclic phosphodiesterase 4B protein (27-215AA) |
| Isotype: | IgG |
| Cross-Reactivity: | Human |
| Purification: | >95%, Protein G purified |

Target Details

| | |
|-------------------|---------------------------------------------------------------------------------------------------------------------------------------------------------------------------|
| Target: | PDE4B |
| Alternative Name: | PDE4B (PDE4B Products) |
| Background: | Background: Hydrolyzes the second messenger cAMP, which is a key regulator of many important physiological processes. May be involved in mediating central nervous system |

Target Details

effects of therapeutic agents ranging from antidepressants to antiasthmatic and anti-inflammatory agents.

Aliases: 5"-cyclic phosphodiesterase 4B antibody, cAMP-specific 3" antibody, cAMP-specific 3',5'-cyclic phosphodiesterase 4B antibody, cAMP-specific phosphodiesterase-4 B isoform antibody, DKFZp686F2182 antibody, DPDE4 antibody, dunce-like phosphodiesterase E4 antibody, MGC126529 antibody, OTTHUMP00000010652 antibody, OTTHUMP00000010653 antibody, OTTHUMP00000010654 antibody, OTTHUMP00000010656 antibody, OTTHUMP00000232365 antibody, PDE 4B antibody, PDE IVB antibody, PDE32 antibody, Pde4b antibody, PDE4B_HUMAN antibody, PDE4B5 antibody, PDEIVB antibody, Phosphodiesterase 4B antibody, Phosphodiesterase 4B cAMP specific antibody, Phosphodiesterase 4B, cAMP specific (phosphodiesterase E4 dunce homolog, Drosophila) antibody

UniProt: [Q07343](#)

Pathways: [Cellular Response to Molecule of Bacterial Origin](#), [cAMP Metabolic Process](#), [Myometrial Relaxation and Contraction](#)

Application Details

Application Notes: Recommended dilution: IHC:1:20-1:200,

Restrictions: For Research Use only

Handling

Format: Liquid

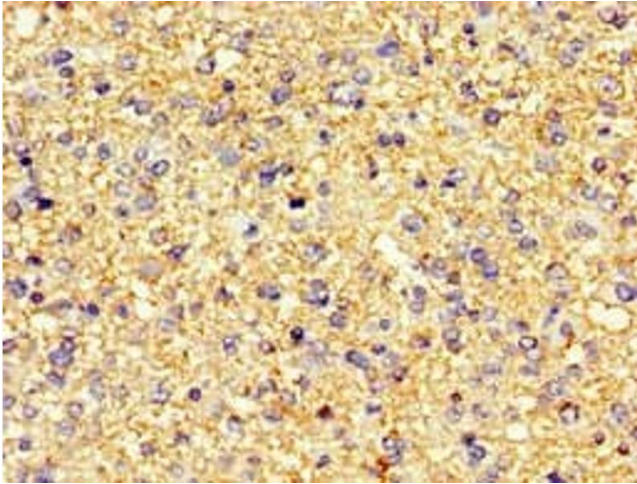
Buffer: Preservative: 0.03 % Proclin 300
Constituents: 50 % Glycerol, 0.01M PBS, pH 7.4

Preservative: ProClin

Precaution of Use: This product contains ProClin: a POISONOUS AND HAZARDOUS SUBSTANCE which should be handled by trained staff only.

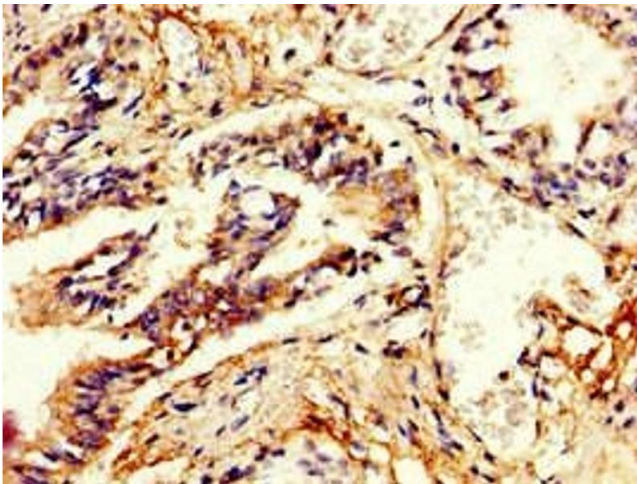
Storage: -20 °C,-80 °C

Storage Comment: Upon receipt, store at -20°C or -80°C. Avoid repeated freeze.



Immunohistochemistry

Image 1. Immunohistochemistry of paraffin-embedded human glioma using ABIN7146632 at dilution of 1:100



Immunohistochemistry

Image 2. Immunohistochemistry of paraffin-embedded human lung tissue using ABIN7146632 at dilution of 1:100