



[Go to Product page](#)

Datasheet for ABIN7146656
anti-CMTR2 antibody (AA 301-600)

2 Images

Overview

Quantity:	100 µg
Target:	CMTR2
Binding Specificity:	AA 301-600
Reactivity:	Human
Host:	Rabbit
Clonality:	Polyclonal
Conjugate:	This CMTR2 antibody is un-conjugated
Application:	ELISA, Immunohistochemistry (IHC), Immunofluorescence (IF)

Product Details

Immunogen:	Recombinant Human Cap-specific mRNA (nucleoside-2'-O-)-methyltransferase 2 protein (301-600AA)
Isotype:	IgG
Cross-Reactivity:	Human
Purification:	>95%, Protein G purified

Target Details

Target:	CMTR2
Alternative Name:	CMTR2 (CMTR2 Products)
Background:	Background: S-adenosyl-L-methionine-dependent methyltransferase that mediates mRNA cap2

Target Details

2'-O-ribose methylation to the 5'-cap structure of mRNAs. Methylates the ribose of the second nucleotide of a m(7)GpppG-capped mRNA and small nuclear RNA (snRNA) (cap0) to produce m(7)GpppRmpNm (cap2). Recognizes a guanosine cap on RNA independently of its N(7) methylation status. Displays cap2 methylation on both cap0 and cap1. Displays a preference for cap1 RNAs.

Aliases: CMTR2 antibody, AFT antibody, FTSJD1Cap-specific mRNA antibody, nucleoside-2'-O-)-methyltransferase 2 antibody, EC 2.1.1.296 antibody, Cap methyltransferase 2 antibody, Cap2 2'-O-ribose methyltransferase 2 antibody, HMTr2 antibody, MTr2 antibody, FtsJ methyltransferase domain-containing protein 1 antibody, Protein adrift homolog antibody

UniProt: [Q8IYT2](#)

Application Details

Application Notes: Recommended dilution: IHC:1:20-1:200, IF:1:50-1:200,

Restrictions: For Research Use only

Handling

Format: Liquid

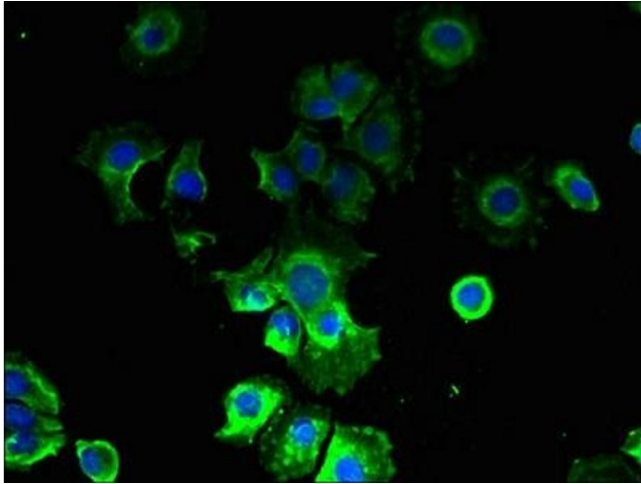
Buffer: Preservative: 0.03 % Proclin 300
Constituents: 50 % Glycerol, 0.01M PBS, PH 7.4

Preservative: ProClin

Precaution of Use: This product contains ProClin: a POISONOUS AND HAZARDOUS SUBSTANCE which should be handled by trained staff only.

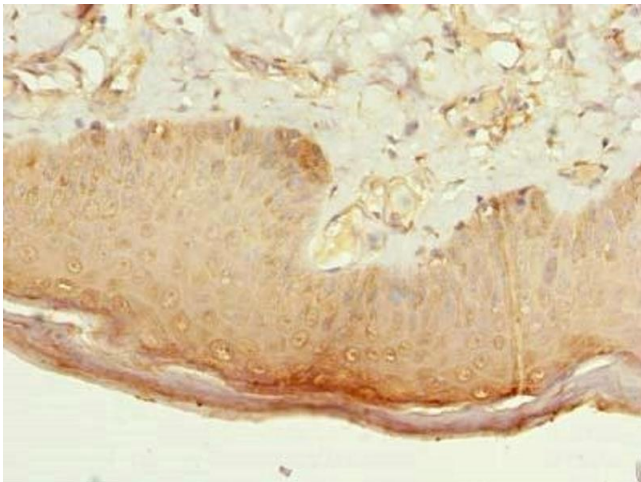
Storage: -20 °C,-80 °C

Storage Comment: Upon receipt, store at -20°C or -80°C. Avoid repeated freeze.



Immunofluorescence

Image 1. Immunofluorescent analysis of MCF-7 cells using ABIN7146656 at dilution of 1:100 and Alexa Fluor 488-conjugated AffiniPure Goat Anti-Rabbit IgG(H+L)



Immunohistochemistry

Image 2. Immunohistochemistry of paraffin-embedded human skin tissue using ABIN7146656 at dilution of 1:100