



[Go to Product page](#)

Datasheet for ABIN7146660
anti-RLTPR antibody (AA 1136-1290)

2 Images

Overview

Quantity:	100 µL
Target:	RLTPR
Binding Specificity:	AA 1136-1290
Reactivity:	Human
Host:	Rabbit
Clonality:	Polyclonal
Conjugate:	This RLTPR antibody is un-conjugated
Application:	Western Blotting (WB), ELISA, Immunoprecipitation (IP)

Product Details

Immunogen:	Recombinant Human Capping protein, Arp2/3 and myosin-I linker protein 2 protein (1136-1290AA)
Isotype:	IgG
Cross-Reactivity:	Human
Purification:	>95%, Protein G purified

Target Details

Target:	RLTPR
Alternative Name:	CARMIL2 (RLTPR Products)
Background:	Background: Cell membrane-cytoskeleton-associated protein that plays a role in the regulation

Target Details

of actin polymerization at the barbed end of actin filaments. Prevents F-actin heterodimeric capping protein (CP) activity at the leading edges of migrating cells, and hence generates uncapped barbed ends and enhances actin polymerization (PubMed:26466680). Plays a role in cell protrusion formations, involved in cell polarity, lamellipodial assembly, membrane ruffling and macropinosome formations (PubMed:19846667, PubMed:26578515, PubMed:26466680). Involved as well in cell migration and invadopodia formation during wound healing (PubMed:19846667, PubMed:26578515, PubMed:26466680).

Aliases: CARMIL2 antibody, CARMIL2b antibody, Leucine rich repeat containing 16C antibody, leucine-rich repeat antibody, Leucine-rich repeat-containing protein 16C antibody, LR16C_HUMAN antibody, LRRC16C antibody, RGD antibody, RGD leucine rich repeat tropomodulin and proline rich containing protein antibody, RGD motif leucine rich repeats tropomodulin domain and proline rich containing antibody, Rltpr antibody, tropomodulin and proline-rich-containing protein antibody

UniProt: [Q6F5E8](#)

Application Details

Application Notes: Recommended dilution: WB:1:500-1:2000, IP:1:200-1:2000,

Restrictions: For Research Use only

Handling

Format: Liquid

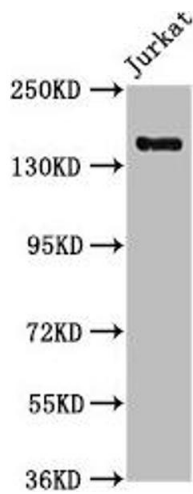
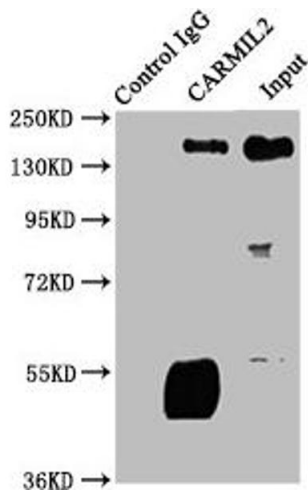
Buffer: Preservative: 0.03 % Proclin 300
Constituents: 50 % Glycerol, 0.01M PBS, pH 7.4

Preservative: ProClin

Precaution of Use: This product contains ProClin: a POISONOUS AND HAZARDOUS SUBSTANCE which should be handled by trained staff only.

Storage: -20 °C,-80 °C

Storage Comment: Upon receipt, store at -20°C or -80°C. Avoid repeated freeze.



Western Blotting

Image 1. Immunoprecipitating CARMIL2 in Jurkat whole cell lysate Lane 1: Rabbit control IgG instead of ABIN7146660 in Jurkat whole cell lysate. For western blotting, a HRP-conjugated Protein G antibody was used as the secondary antibody (1/2000) Lane 2: ABIN7146660 (6 µg) + Jurkat whole cell lysate (500 µg) Lane 3: Jurkat whole cell lysate (20 µg)

Western Blotting

Image 2. Western Blot Positive WB detected in: Jurkat whole cell lysate All lanes: CARMIL2 antibody at 1:1000 Secondary Goat polyclonal to rabbit IgG at 1/50000 dilution Predicted band size: 155, 149 kDa Observed band size: 155 kDa