

Datasheet for ABIN7146664  
**anti-Caprin-1 antibody (AA 573-703)**

## 3 Images

[Go to Product page](#)

## Overview

Quantity:	100 µg
Target:	Caprin-1
Binding Specificity:	AA 573-703
Reactivity:	Human
Host:	Rabbit
Clonality:	Polyclonal
Conjugate:	This Caprin-1 antibody is un-conjugated
Application:	ELISA, Immunohistochemistry (IHC), Immunofluorescence (IF)

## Product Details

Immunogen:	Recombinant Human Caprin-1 protein (573-703AA)
Isotype:	IgG
Cross-Reactivity:	Human
Purification:	>95%, Protein G purified

## Target Details

Target:	Caprin-1
Alternative Name:	CAPRIN1 ( <a href="#">Caprin-1 Products</a> )
Background:	Background: May regulate the transport and translation of mRNAs of proteins involved in synaptic plasticity in neurons and cell proliferation and migration in multiple cell types.

## Target Details

Aliases: activation/proliferation-associated protein 1 antibody, CAPR1\_HUMAN antibody, Caprin-1 antibody, CAPRIN1 antibody, Cell cycle-associated protein 1 antibody, Cytoplasmic activation- and proliferation-associated protein 1 antibody, cytoplasmic activation/proliferation-associated protein-1 antibody, GPI-anchored membrane protein 1 antibody, GPI-anchored protein p137 antibody, GPI-p137 antibody, GPIAP1 antibody, GPIP137 antibody, M11S1 antibody, Membrane component chromosome 11 surface marker 1 antibody, p137GPI antibody, RNA granule protein 105 antibody, RNG105 antibody

UniProt: [Q14444](#)

## Application Details

Application Notes: Recommended dilution: IHC:1:200-1:500, IF:1:50-1:200,

Restrictions: For Research Use only

## Handling

Format: Liquid

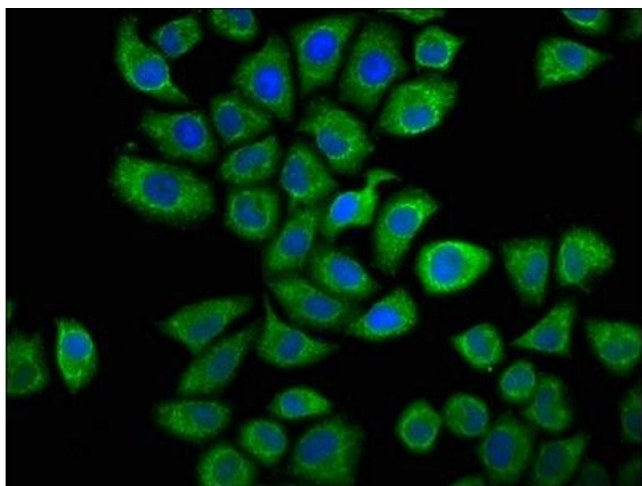
Buffer: Preservative: 0.03 % Proclin 300  
Constituents: 50 % Glycerol, 0.01M PBS, pH 7.4

Preservative: ProClin

Precaution of Use: This product contains ProClin: a POISONOUS AND HAZARDOUS SUBSTANCE which should be handled by trained staff only.

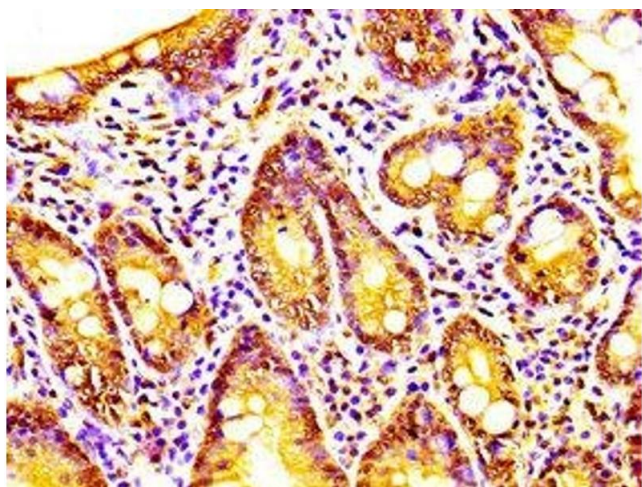
Storage: -20 °C, -80 °C

Storage Comment: Upon receipt, store at -20°C or -80°C. Avoid repeated freeze.



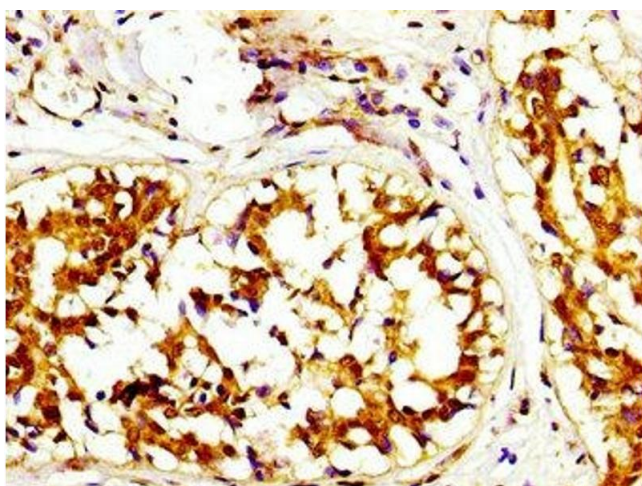
#### Immunofluorescence

**Image 1.** Immunofluorescence staining of HeLa cells with ABIN7146664 at 1:66, counter-stained with DAPI. The cells were fixed in 4% formaldehyde, permeabilized using 0.2% Triton X-100 and blocked in 10% normal Goat Serum. The cells were then incubated with the antibody overnight at 4°C. The secondary antibody was Alexa Fluor 488-conjugated AffiniPure Goat Anti-Rabbit IgG(H+L).



#### Immunohistochemistry

**Image 2.** IHC image of ABIN7146664 diluted at 1:200 and staining in paraffin-embedded human small intestine tissue performed on a Leica Bond™ system. After dewaxing and hydration, antigen retrieval was mediated by high pressure in a citrate buffer (pH 6.0). Section was blocked with 10% normal goat serum 30min at RT. Then primary antibody (1% BSA) was incubated at 4°C overnight. The primary is detected by a biotinylated secondary antibody and visualized using an HRP conjugated SP system.



#### Immunohistochemistry

**Image 3.** IHC image of ABIN7146664 diluted at 1:200 and staining in paraffin-embedded human breast cancer performed on a Leica Bond™ system. After dewaxing and hydration, antigen retrieval was mediated by high pressure in a citrate buffer (pH 6.0). Section was blocked with 10% normal goat serum 30min at RT. Then primary antibody (1% BSA) was incubated at 4°C overnight. The primary is detected by a biotinylated secondary antibody and visualized using an HRP conjugated SP system.