

Datasheet for ABIN7146668  
**anti-CPS1 antibody (AA 1361-1500)**

## 5 Images

[Go to Product page](#)

## Overview

|                      |   |
|----------------------|---|
| Quantity:            | 100 µg  |
| Target:              | CPS1  |
| Binding Specificity: | AA 1361-1500  |
| Reactivity:          | Human   |
| Host:                | Rabbit  |
| Clonality:           | Polyclonal  |
| Conjugate:           | This CPS1 antibody is un-conjugated   |
| Application:         | Western Blotting (WB), ELISA, Immunofluorescence (IF), Immunohistochemistry (IHC), Immunoprecipitation (IP) |

## Product Details

|                   |   |
|-------------------|---|
| Immunogen:        | Recombinant Human Carbamoyl-phosphate synthase [ammonia], mitochondrial protein (1361-1500AA) |
| Isotype:          | IgG   |
| Cross-Reactivity: | Human   |
| Purification:     | >95%, Protein G purified  |

## Target Details

|                   |  |
|-------------------|--|
| Target:           | CPS1                                   |
| Alternative Name: | CPS1 ( <a href="#">CPS1 Products</a> ) |

## Target Details

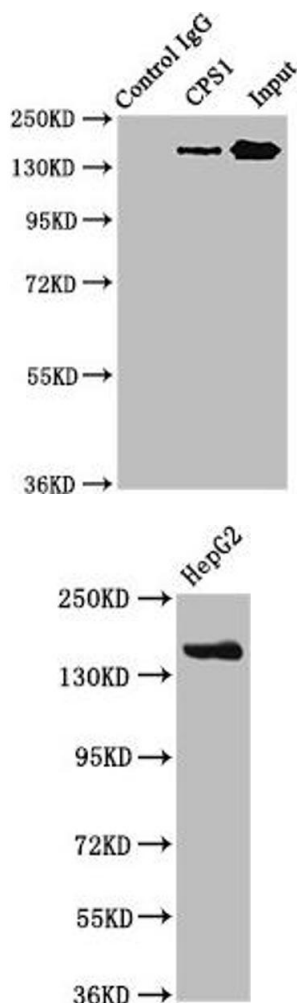
|             |  |
|-------------|--|
| Background: | <p>Background: Involved in the urea cycle of ureotelic animals where the enzyme plays an important role in removing excess ammonia from the cell.</p> <p>Aliases: Carbamoyl phosphate synthase [ammonia] antibody, Carbamoyl phosphate synthase [ammonia] mitochondrial antibody, Carbamoyl phosphate synthase antibody, Carbamoyl phosphate synthetase 1 antibody, Carbamoyl phosphate synthetase 1 mitochondrial antibody, Carbamoyl phosphate synthetase I antibody, Carbamoyl-phosphate synthase [ammonia] antibody, Carbamoyl-phosphate synthetase I antibody, Carbamoylphosphate synthase antibody, Carbamoylphosphate synthetase 1 antibody, Carbamoylphosphate synthetase I antibody, CPS 1 antibody, Cps1 antibody, CPSase 1 antibody, CPSase I antibody, CPSASE1 antibody, CPSM_HUMAN antibody, mitochondrial antibody, MS738 antibody</p> |
| UniProt:    | <a href="#">P31327</a>   |
| Pathways:   | <a href="#">Response to Growth Hormone Stimulus</a> , <a href="#">Cellular Glucan Metabolic Process</a>  |

## Application Details

|                    |   |
|--------------------|---|
| Application Notes: | Recommended dilution: WB:1:500-1:5000, IHC:1:200-1:500, IF:1:50-1:200, IP:1:200-1:2000, |
| Restrictions:      | For Research Use only   |

## Handling

|                    |   |
|--------------------|---|
| Format:            | Liquid  |
| Buffer:            | Preservative: 0.03 % Proclin 300<br>Constituents: 50 % Glycerol, 0.01M PBS, pH 7.4                                |
| Preservative:      | ProClin   |
| Precaution of Use: | This product contains ProClin: a POISONOUS AND HAZARDOUS SUBSTANCE which should be handled by trained staff only. |
| Storage:           | -20 °C,-80 °C   |
| Storage Comment:   | Upon receipt, store at -20°C or -80°C. Avoid repeated freeze.   |

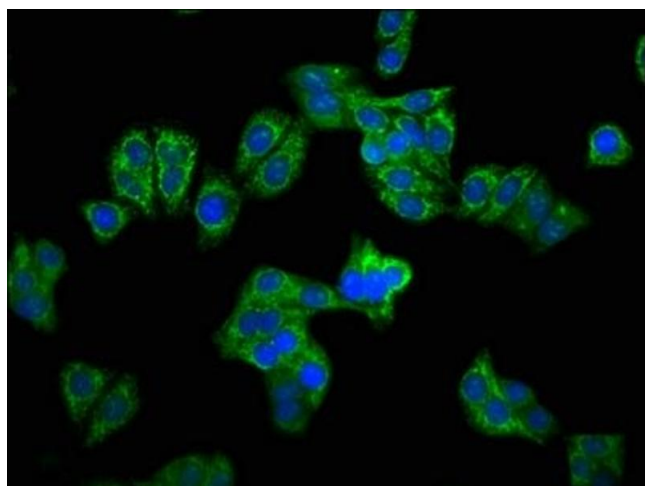


### Western Blotting

**Image 1.** Immunoprecipitating CPS1 in HepG2 whole cell lysate Lane 1: Rabbit control IgG instead of ABIN7146668 in HepG2 whole cell lysate. For western blotting, a HRP-conjugated Protein G antibody was used as the secondary antibody (1/2000) Lane 2: ABIN7146668 (6 µg) + HepG2 whole cell lysate (500 µg) Lane 3: HepG2 whole cell lysate (20 µg)

### Western Blotting

**Image 2.** Western Blot Positive WB detected in: HepG2 whole cell lysate All lanes: CPS1 antibody at 3.8 µg/mL Secondary Goat polyclonal to rabbit IgG at 1/50000 dilution Predicted band size: 165, 117, 166 kDa Observed band size: 165 kDa



### Immunofluorescence

**Image 3.** Immunofluorescence staining of HepG2 cells with ABIN7146668 at 1:100, counter-stained with DAPI. The cells were fixed in 4% formaldehyde, permeabilized using 0.2% Triton X-100 and blocked in 10% normal Goat Serum. The cells were then incubated with the antibody overnight at 4°C. The secondary antibody was Alexa Fluor 488-conjugated AffiniPure Goat Anti-Rabbit IgG(H+L).

Please check the [product details page](#) for more images. Overall 5 images are available for ABIN7146668.