



[Go to Product page](#)

Datasheet for ABIN7146703
anti-CA12 antibody (AA 25-301)

3 Images

Overview

Quantity:	100 µg
Target:	CA12
Binding Specificity:	AA 25-301
Reactivity:	Human
Host:	Rabbit
Clonality:	Polyclonal
Conjugate:	This CA12 antibody is un-conjugated
Application:	Western Blotting (WB), ELISA, Immunohistochemistry (IHC)

Product Details

Immunogen:	Recombinant Human Carbonic anhydrase 12 protein (25-301AA)
Isotype:	IgG
Cross-Reactivity:	Human, Mouse
Purification:	>95%, Protein G purified

Target Details

Target:	CA12
Alternative Name:	CA12 (CA12 Products)
Background:	Background: Reversible hydration of carbon dioxide. Aliases: CA 12 antibody, CA XII antibody, CA-XII antibody, CA12 antibody, CAH12_HUMAN

Target Details

antibody, Carbonate dehydratase XII antibody, Carbonic anhydrase 12 antibody, Carbonic anhydrase XII antibody, Carbonic dehydratase antibody, CAXII antibody, FLJ20151 antibody, HsT18816 antibody, T18816 antibody, Tumor antigen HOM RCC 3.1.3 antibody, Tumor antigen HOM-RCC-3.1.3 antibody

UniProt: [O43570](#)

Application Details

Application Notes: Recommended dilution: WB:1:500-1:2000, IHC:1:20-1:200,

Restrictions: For Research Use only

Handling

Format: Liquid

Buffer: Preservative: 0.03 % Proclin 300
Constituents: 50 % Glycerol, 0.01M PBS, PH 7.4

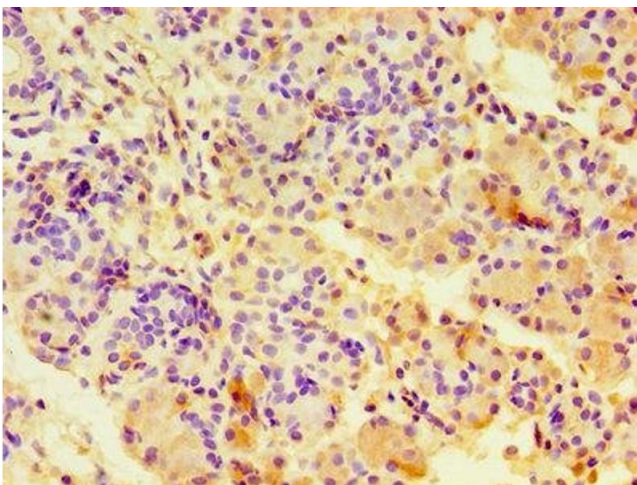
Preservative: ProClin

Precaution of Use: This product contains ProClin: a POISONOUS AND HAZARDOUS SUBSTANCE which should be handled by trained staff only.

Storage: -20 °C,-80 °C

Storage Comment: Upon receipt, store at -20°C or -80°C. Avoid repeated freeze.

Images



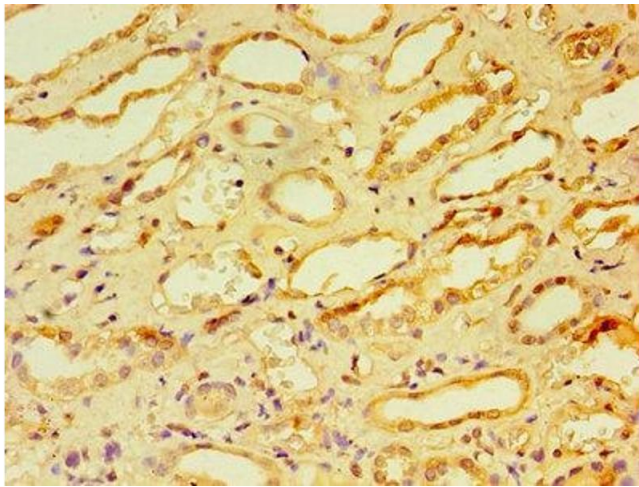
Immunohistochemistry

Image 1. Immunohistochemistry of paraffin-embedded human pancreatic tissue using ABIN7146703 at dilution of 1:100



Western Blotting

Image 2. Western blot All lanes: CA12 antibody at 6 µg/mL + Mouse kidney tissue Secondary Goat polyclonal to rabbit IgG at 1/10000 dilution Predicted band size: 40, 39 kDa Observed band size: 40, 48 kDa



Immunohistochemistry

Image 3. Immunohistochemistry of paraffin-embedded human kidney tissue using ABIN7146703 at dilution of 1:100