



[Go to Product page](#)

Datasheet for ABIN7146714  
**anti-CA14 antibody (AA 16-290)**

3 Images

### Overview

|                      |  |
|----------------------|--|
| Quantity:            | 100 µL   |
| Target:              | CA14   |
| Binding Specificity: | AA 16-290  |
| Reactivity:          | Human  |
| Host:                | Rabbit   |
| Clonality:           | Polyclonal   |
| Conjugate:           | This CA14 antibody is un-conjugated                      |
| Application:         | Western Blotting (WB), ELISA, Immunohistochemistry (IHC) |

### Product Details

|                   |  |
|-------------------|--|
| Immunogen:        | Recombinant Human Carbonic anhydrase 14 protein (16-290AA) |
| Isotype:          | IgG  |
| Cross-Reactivity: | Human, Mouse   |
| Purification:     | Antigen Affinity Purified                                  |

### Target Details

|                   |  |
|-------------------|--|
| Target:           | CA14   |
| Alternative Name: | CA14 ( <a href="#">CA14 Products</a> )   |
| Background:       | Background: Reversible hydration of carbon dioxide.<br>Aliases: CA 14 antibody, CA XIV antibody, CA-XIV antibody, CA14 antibody, CAH14_HUMAN |

## Target Details

antibody, Carbonate dehydratase XIV antibody, Carbonic anhydrase 14 antibody, Carbonic anhydrase XIV antibody, Carbonic dehydratase antibody, CAXIV antibody, UNQ690/PRO1335 antibody

UniProt: [Q9ULX7](#)

## Application Details

Application Notes: Recommended dilution: WB:1:500-1:2000, IHC:1:20-1:200,

Restrictions: For Research Use only

## Handling

Format: Liquid

Buffer: PBS with 0.02 % sodium azide, 50 % glycerol, pH 7.3.

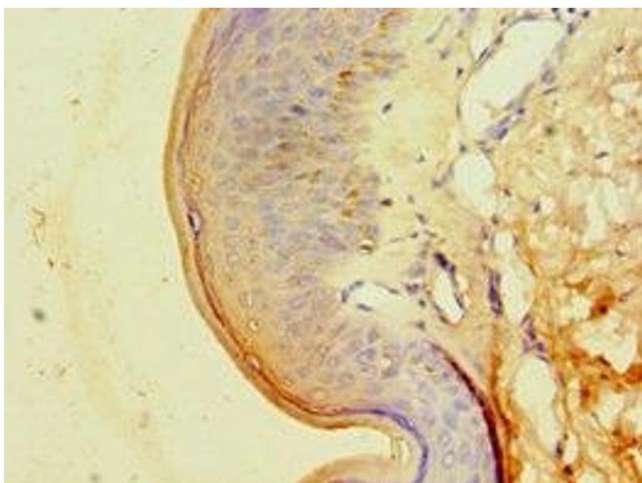
Preservative: Sodium azide

Precaution of Use: This product contains Sodium azide: a POISONOUS AND HAZARDOUS SUBSTANCE which should be handled by trained staff only.

Storage: -20 °C,-80 °C

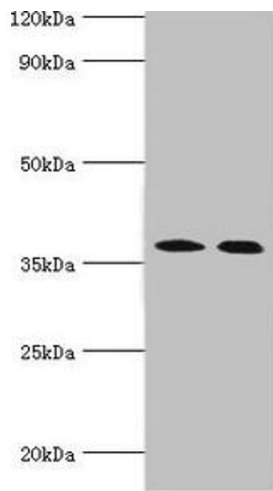
Storage Comment: Upon receipt, store at -20°C or -80°C. Avoid repeated freeze.

## Images



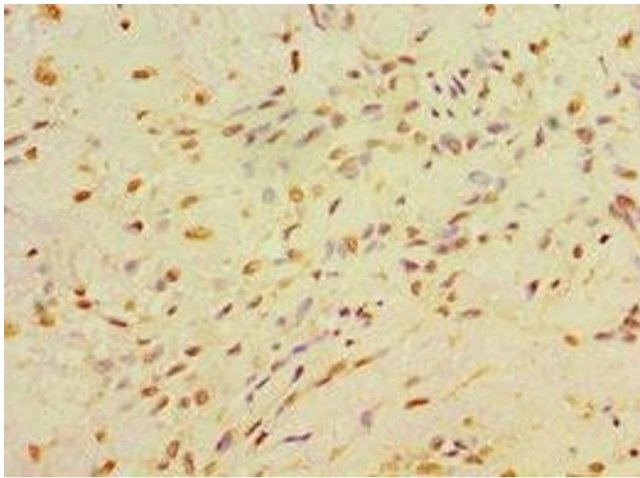
### Immunohistochemistry

**Image 1.** Immunohistochemistry of paraffin-embedded human skin tissue using ABIN7146714 at dilution of 1:100



### Western Blotting

**Image 2.** Western blot All lanes: Carbonic anhydrase 14 antibody at 5 µg/mL Lane 1: Mouse liver tissue Lane 2: Jurkat whole cell lysate Secondary Goat polyclonal to rabbit IgG at 1/10000 dilution Predicted band size: 38 kDa Observed band size: 38 kDa



### Immunohistochemistry

**Image 3.** Immunohistochemistry of paraffin-embedded human breast cancer using ABIN7146714 at dilution of 1:100