

Datasheet for ABIN7146715
anti-CA2 antibody (AA 2-260)[Go to Product page](#)

5 Images

Overview

Quantity:	100 µg
Target:	CA2
Binding Specificity:	AA 2-260
Reactivity:	Human
Host:	Rabbit
Clonality:	Polyclonal
Conjugate:	This CA2 antibody is un-conjugated
Application:	Western Blotting (WB), Immunohistochemistry (IHC), ELISA, Immunofluorescence (IF)

Product Details

Immunogen:	Recombinant Human Carbonic anhydrase 2 protein (2-260AA)
Isotype:	IgG
Cross-Reactivity:	Human, Mouse, Rat
Purification:	>95%, Protein G purified

Target Details

Target:	CA2
Alternative Name:	CA2 (CA2 Products)
Background:	Background: Essential for bone resorption and osteoclast differentiation .Reversible hydration of carbon dioxide. Can hydrate cyanamide to urea. Involved in the regulation of fluid secretion

Target Details

into the anterior chamber of the eye. Contributes to intracellular pH regulation in the duodenal upper villous epithelium during proton-coupled peptide absorption. Stimulates the chloride-bicarbonate exchange activity of SLC26A6.

Aliases: CA 2 antibody, CA II antibody, CA-II antibody, Ca2 antibody, CAC antibody, CAH2_HUMAN antibody, CAII antibody, Car 2 antibody, Car2 antibody, Carbonate dehydratase II antibody, Carbonic anhydrase 2 antibody, Carbonic anhydrase B antibody, Carbonic anhydrase C antibody, Carbonic anhydrase C, formerly antibody, Carbonic anhydrase II antibody, Carbonic dehydratase antibody, epididymis luminal protein 76 antibody, Epididymis secretory protein Li 282 antibody, HEL-76 antibody, HEL-S-282 antibody

UniProt: [P00918](#)

Application Details

Application Notes: Recommended dilution: WB:1:500-1:5000, IHC:1:50-1:500, IF:1:50-1:200,

Restrictions: For Research Use only

Handling

Format: Liquid

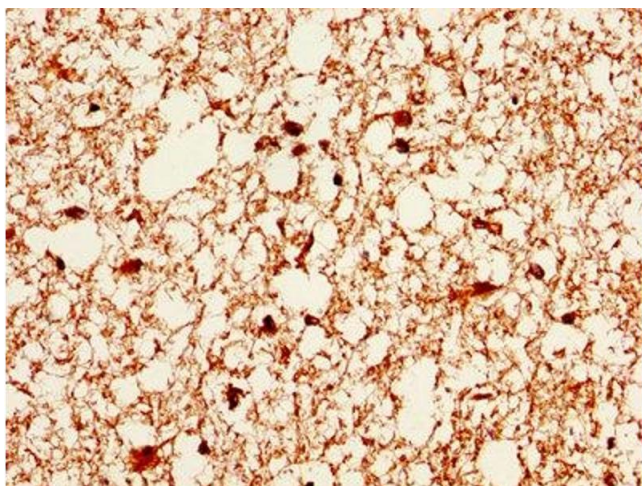
Buffer: Preservative: 0.03 % Proclin 300
Constituents: 50 % Glycerol, 0.01M PBS, PH 7.4

Preservative: ProClin

Precaution of Use: This product contains ProClin: a POISONOUS AND HAZARDOUS SUBSTANCE which should be handled by trained staff only.

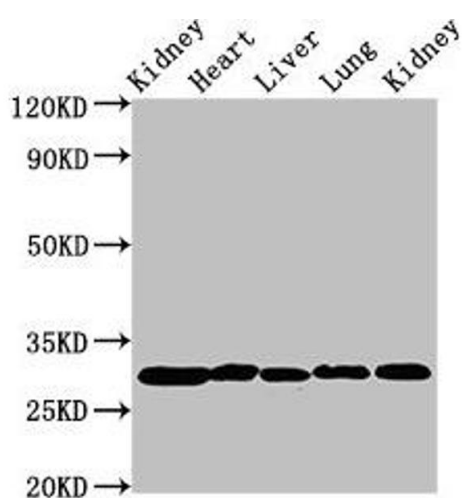
Storage: -20 °C,-80 °C

Storage Comment: Upon receipt, store at -20°C or -80°C. Avoid repeated freeze.



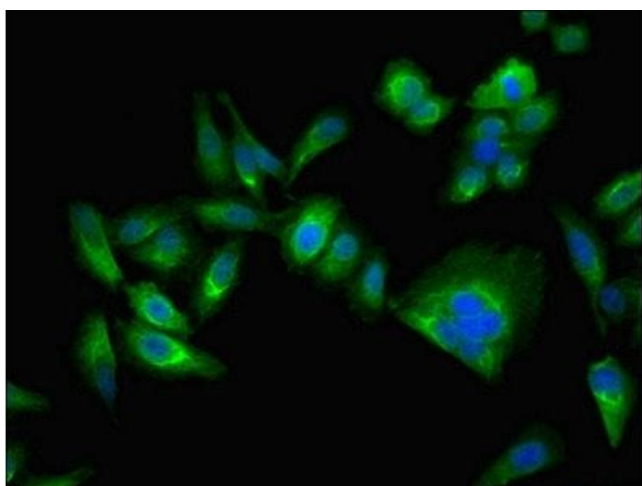
Immunohistochemistry

Image 1. IHC image of ABIN7146715 diluted at 1:400 and staining in paraffin-embedded human brain tissue performed on a Leica Bond™ system. After dewaxing and hydration, antigen retrieval was mediated by high pressure in a citrate buffer (pH 6.0). Section was blocked with 10% normal goat serum 30min at RT. Then primary antibody (1% BSA) was incubated at 4°C overnight. The primary is detected by a biotinylated secondary antibody and visualized using an HRP conjugated SP system.



Western Blotting

Image 2. Western Blot Positive WB detected in: Rat kidney tissue, Rat heart tissue, Rat liver tissue, Mouse lung tissue, Mouse kidney tissue All lanes: CA2 antibody at 2 µg/mL Secondary Goat polyclonal to rabbit IgG at 1/50000 dilution Predicted band size: 30 kDa Observed band size: 30 kDa



Immunofluorescence

Image 3. Immunofluorescent analysis of Hela cells using ABIN7146715 at dilution of 1:100 and Alexa Fluor 488-conjugated AffiniPure Goat Anti-Rabbit IgG(H+L)

Please check the [product details page](#) for more images. Overall 5 images are available for ABIN7146715.