



[Go to Product page](#)

Datasheet for ABIN7146745  
**anti-CBR3 antibody (AA 118-277)**

4 Images

Overview

Quantity:	100 µL
Target:	CBR3
Binding Specificity:	AA 118-277
Reactivity:	Human
Host:	Rabbit
Clonality:	Polyclonal
Conjugate:	This CBR3 antibody is un-conjugated
Application:	Western Blotting (WB), Immunohistochemistry (IHC), ELISA

Product Details

Immunogen:	Recombinant Human Carbonyl reductase [NADPH] 3 protein (118-277AA)
Isotype:	IgG
Cross-Reactivity:	Human
Purification:	Antigen Affinity Purified

Target Details

Target:	CBR3
Alternative Name:	CBR3 ( <a href="#">CBR3 Products</a> )
Background:	Background: Has low NADPH-dependent oxidoreductase activity towards 4-benzoylpyridine and menadione (in vitro).

## Target Details

Aliases: Carbonyl reductase (NADPH) 3 antibody, Carbonyl reductase (NADPH) 3 EC 1.1.1.184 antibody, Carbonyl reductase [NADPH] 3 antibody, Carbonyl reductase 3 antibody, CBR 3 antibody, CBR3 antibody, CBR3\_HUMAN antibody, EC 1.1.1.184 antibody, Epididymis secretory protein Li 25 antibody, hCBR3 antibody, HEL S 25 antibody, NADPH dependent carbonyl reductase 3 antibody, NADPH-dependent carbonyl reductase 3 antibody, SDR21C2 antibody, Short chain dehydrogenase/reductase family 21C member 2 antibody

UniProt: [O75828](#)

## Application Details

Application Notes: Recommended dilution: WB:1:500-1:2000, IHC:1:20-1:200,

Restrictions: For Research Use only

## Handling

Format: Liquid

Buffer: PBS with 0.02 % sodium azide, 50 % glycerol, pH 7.3.

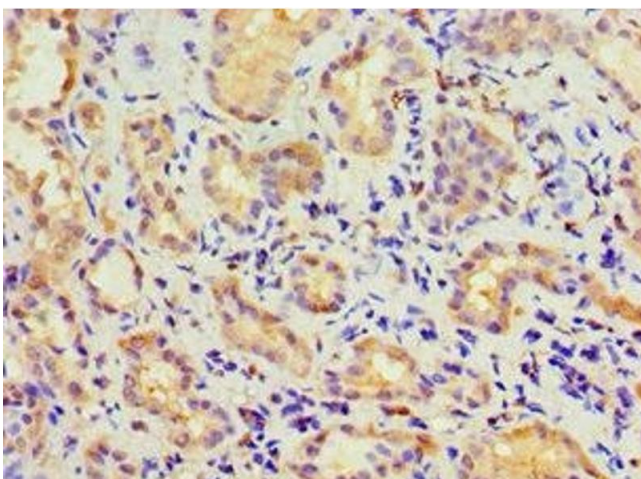
Preservative: Sodium azide

Precaution of Use: This product contains Sodium azide: a POISONOUS AND HAZARDOUS SUBSTANCE which should be handled by trained staff only.

Storage: -20 °C,-80 °C

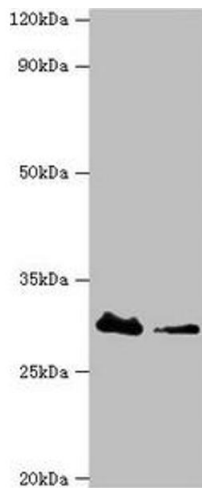
Storage Comment: Upon receipt, store at -20°C or -80°C. Avoid repeated freeze.

## Images



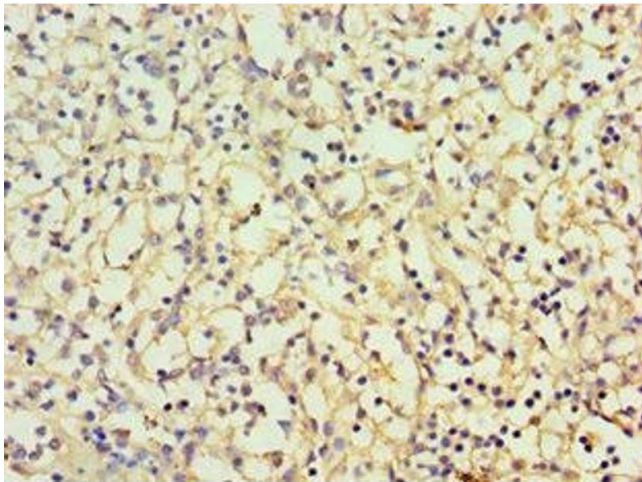
### Immunohistochemistry

**Image 1.** Immunohistochemistry of paraffin-embedded human kidney tissue using ABIN7146745 at dilution of 1:100



### Western Blotting

**Image 2.** Western blot All lanes: Carbonyl reductase [NADPH] 3 antibody at 10 µg/mL Lane 1: Hela whole cell lysate Lane 2: K562 whole cell lysate Secondary Goat polyclonal to rabbit IgG at 1/10000 dilution Predicted band size: 31 kDa Observed band size: 31 kDa



### Immunohistochemistry

**Image 3.** Immunohistochemistry of paraffin-embedded human spleen tissue using ABIN7146745 at dilution of 1:100

Please check the [product details page](#) for more images. Overall 4 images are available for ABIN7146745.