



[Go to Product page](#)

Datasheet for ABIN7146773
anti-CPE antibody (AA 252-363)

1 Image

Overview

Quantity:	100 µg
Target:	CPE
Binding Specificity:	AA 252-363
Reactivity:	Human
Host:	Rabbit
Clonality:	Polyclonal
Conjugate:	This CPE antibody is un-conjugated
Application:	Western Blotting (WB), ELISA

Product Details

Immunogen:	Recombinant Human Carboxypeptidase E protein (252-363AA)
Isotype:	IgG
Cross-Reactivity:	Human
Purification:	>95%, Protein G purified

Target Details

Target:	CPE
Alternative Name:	CPE (CPE Products)
Background:	Background: Removes residual C-terminal Arg or Lys remaining after initial endoprotease cleavage during prohormone processing. Processes proinsulin.

Target Details

Aliases: Carboxypeptidase E antibody, Carboxypeptidase H antibody, Carboxypeptidase H precursor antibody, CarboxypeptidaseE antibody, CarboxypeptidaseH antibody, CBPE_HUMAN antibody, Cobalt stimulated chromaffin granule carboxypeptidase antibody, CPE antibody, Cph 1 antibody, CPH antibody, Enkephalin convertase antibody, Entephalin convertase antibody, Insulin granule associated carboxypeptidase antibody, Prohormone processing carboxypeptidase antibody, Prohormone-processing carboxypeptidase antibody

UniProt: [P16870](#)

Pathways: [Peptide Hormone Metabolism](#), [Synaptic Membrane](#)

Application Details

Application Notes: Recommended dilution: WB:1:500-1:5000,

Restrictions: For Research Use only

Handling

Format: Liquid

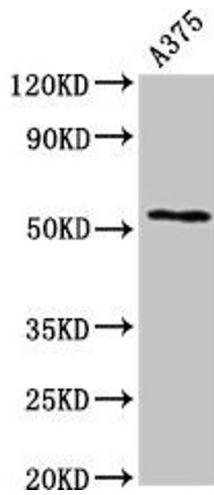
Buffer: Preservative: 0.03 % Proclin 300
Constituents: 50 % Glycerol, 0.01M PBS, pH 7.4

Preservative: ProClin

Precaution of Use: This product contains ProClin: a POISONOUS AND HAZARDOUS SUBSTANCE which should be handled by trained staff only.

Storage: -20 °C,-80 °C

Storage Comment: Upon receipt, store at -20°C or -80°C. Avoid repeated freeze.



Western Blotting

Image 1. Western Blot Positive WB detected in: A375 whole cell lysate All lanes: CPE antibody at 2.7 $\mu\text{g}/\text{mL}$ Secondary Goat polyclonal to rabbit IgG at 1/50000 dilution Predicted band size: 54, 50 kDa Observed band size: 54 kDa