

Datasheet for ABIN7146788  
**anti-CEACAM16 antibody (AA 323-414)**[Go to Product page](#)

## 1 Image

## Overview

Quantity:	100 µg
Target:	CEACAM16
Binding Specificity:	AA 323-414
Reactivity:	Human
Host:	Rabbit
Clonality:	Polyclonal
Conjugate:	This CEACAM16 antibody is un-conjugated
Application:	ELISA, Immunohistochemistry (IHC)

## Product Details

Immunogen:	Recombinant Human Carcinoembryonic antigen-related cell adhesion molecule 16 protein (323-414AA)
Isotype:	IgG
Cross-Reactivity:	Human
Purification:	>95%, Protein G purified

## Target Details

Target:	CEACAM16
Alternative Name:	CEACAM16 ( <a href="#">CEACAM16 Products</a> )
Background:	Background: Required for proper hearing, it may play a role in maintaining the integrity of the

## Target Details

tectorial membrane.

Aliases: CEACAM16 antibody, CEAL2Carcinoembryonic antigen-related cell adhesion molecule 16 antibody, Carcinoembryonic antigen-like 2 antibody

UniProt: [Q2WEN9](#)

Pathways: [Sensory Perception of Sound](#)

## Application Details

Application Notes: Recommended dilution: IHC:1:500-1:1000,

Restrictions: For Research Use only

## Handling

Format: Liquid

Buffer: Preservative: 0.03 % Proclin 300  
Constituents: 50 % Glycerol, 0.01M PBS, pH 7.4

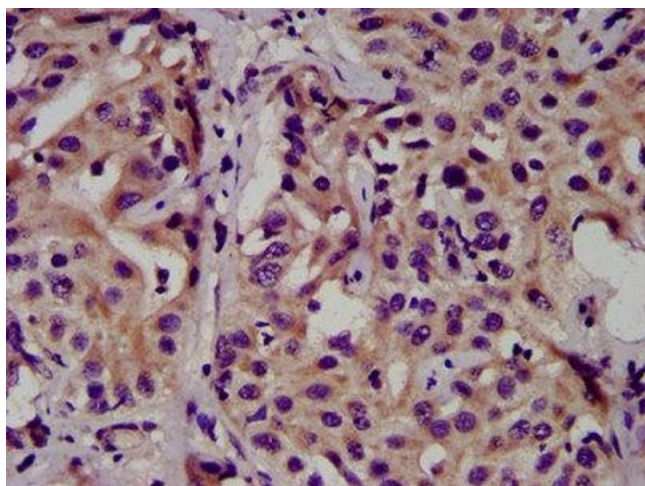
Preservative: ProClin

Precaution of Use: This product contains ProClin: a POISONOUS AND HAZARDOUS SUBSTANCE which should be handled by trained staff only.

Storage: -20 °C,-80 °C

Storage Comment: Upon receipt, store at -20°C or -80°C. Avoid repeated freeze.

## Images



### Immunohistochemistry

**Image 1.** IHC image of ABIN7146788 diluted at 1:500 and staining in paraffin-embedded human liver cancer performed on a Leica Bond™ system. After dewaxing and hydration, antigen retrieval was mediated by high pressure in a citrate buffer (pH 6.0). Section was blocked with 10% normal goat serum 30min at RT. Then primary antibody (1% BSA) was incubated at 4°C overnight. The primary is detected by a biotinylated secondary antibody and visualized using an HRP conjugated SP system.