

Datasheet for ABIN7146812

anti-Phospholamban antibody (AA 1-52)[Go to Product page](#)**1** Image

Overview

Quantity:	100 µg
Target:	Phospholamban (PLN)
Binding Specificity:	AA 1-52
Reactivity:	Human
Host:	Rabbit
Clonality:	Polyclonal
Conjugate:	This Phospholamban antibody is un-conjugated
Application:	ELISA, Immunohistochemistry (IHC)

Product Details

Immunogen:	Recombinant Human Cardiac phospholamban protein (1-52AA)
Isotype:	IgG
Cross-Reactivity:	Human
Purification:	>95%, Protein G purified

Target Details

Target:	Phospholamban (PLN)
Alternative Name:	PLN (PLN Products)
Background:	Background: Reversibly inhibits the activity of ATP2A2 in cardiac sarcoplasmic reticulum by decreasing the apparent affinity of the ATPase for Ca(2+). Modulates the contractility of the

Target Details

heart muscle in response to physiological stimuli via its effects on ATP2A2. Modulates calcium re-uptake during muscle relaxation and plays an important role in calcium homeostasis in the heart muscle. The degree of ATP2A2 inhibition depends on the oligomeric state of PLN.

ATP2A2 inhibition is alleviated by PLN phosphorylation.

Aliases: Cardiac phospholamban antibody, CMD1P antibody, CMH18 antibody, PLB antibody, PIn antibody, PPLA_HUMAN antibody

UniProt: [P26678](#)

Pathways: [Negative Regulation of Transporter Activity](#)

Application Details

Application Notes: Recommended dilution: IHC:1:20-1:200,

Restrictions: For Research Use only

Handling

Format: Liquid

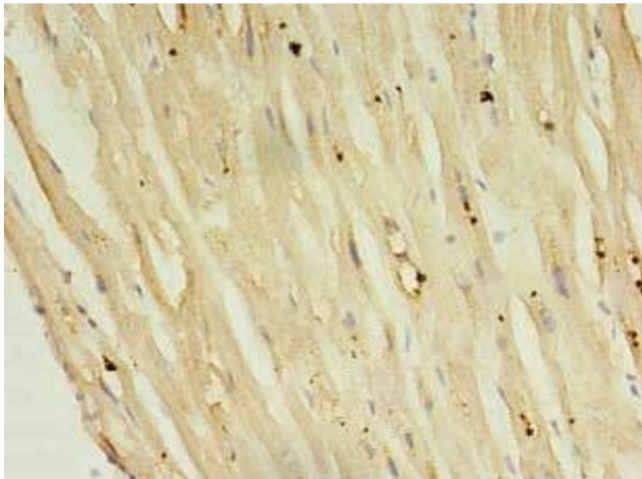
Buffer: Preservative: 0.03 % Proclin 300
Constituents: 50 % Glycerol, 0.01M PBS, PH 7.4

Preservative: ProClin

Precaution of Use: This product contains ProClin: a POISONOUS AND HAZARDOUS SUBSTANCE which should be handled by trained staff only.

Storage: -20 °C,-80 °C

Storage Comment: Upon receipt, store at -20°C or -80°C. Avoid repeated freeze.



Immunohistochemistry

Image 1. Immunohistochemistry of paraffin-embedded human heart tissue using ABIN7146812 at dilution of 1:100