

Datasheet for ABIN7146817

anti-Cardiotrophin 1 antibody (AA 1-201)**1** Image[Go to Product page](#)

Overview

Quantity:	100 µg
Target:	Cardiotrophin 1 (CTF1)
Binding Specificity:	AA 1-201
Reactivity:	Human
Host:	Rabbit
Clonality:	Polyclonal
Conjugate:	This Cardiotrophin 1 antibody is un-conjugated
Application:	ELISA, Immunohistochemistry (IHC)

Product Details

Immunogen:	Recombinant Human Cardiotrophin-1 protein (1-201AA)
Isotype:	IgG
Cross-Reactivity:	Human
Purification:	>95%, Protein G purified

Target Details

Target:	Cardiotrophin 1 (CTF1)
Alternative Name:	CTF1 (CTF1 Products)
Background:	Background: Induces cardiac myocyte hypertrophy in vitro. Binds to and activates the ILST/gp130 receptor.

Target Details

Aliases: Cardiophin 1 antibody, Cardiophin1 antibody, Cardiotrophin I antibody, Cardiotrophin-1 antibody, Cardiotrophin1 antibody, CardiotrophinI antibody, CT 1 antibody, CT-1 antibody, CT1 antibody, CTF 1 antibody, Ctf1 antibody, CTF1_HUMAN antibody

UniProt: [Q16619](#)

Pathways: [JAK-STAT Signaling](#)

Application Details

Application Notes: Recommended dilution: IHC:1:20-1:200,

Restrictions: For Research Use only

Handling

Format: Liquid

Buffer: Preservative: 0.03 % Proclin 300
Constituents: 50 % Glycerol, 0.01M PBS, pH 7.4

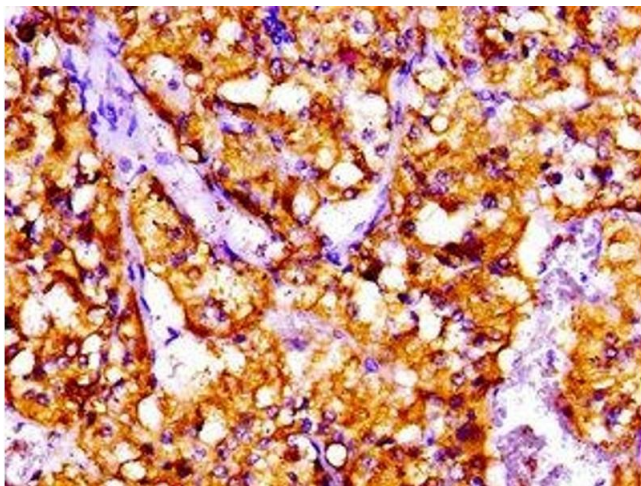
Preservative: ProClin

Precaution of Use: This product contains ProClin: a POISONOUS AND HAZARDOUS SUBSTANCE which should be handled by trained staff only.

Storage: -20 °C,-80 °C

Storage Comment: Upon receipt, store at -20°C or -80°C. Avoid repeated freeze.

Images



Immunohistochemistry

Image 1. IHC image of ABIN7146817 diluted at 1:100 and staining in paraffin-embedded human adrenal gland tissue performed on a Leica Bond™ system. After dewaxing and hydration, antigen retrieval was mediated by high pressure in a citrate buffer (pH 6.0). Section was blocked with 10% normal goat serum 30min at RT. Then primary antibody (1% BSA) was incubated at 4°C overnight. The primary is detected by a biotinylated secondary antibody and visualized using an HRP conjugated SP system.