

Datasheet for ABIN7146821
anti-CLCF1 antibody (AA 28-178)[Go to Product page](#)

1 Image

Overview

Quantity:	100 µg
Target:	CLCF1
Binding Specificity:	AA 28-178
Reactivity:	Human
Host:	Rabbit
Clonality:	Polyclonal
Conjugate:	This CLCF1 antibody is un-conjugated
Application:	Immunohistochemistry (IHC), ELISA

Product Details

Immunogen:	Recombinant Human Cardiotrophin-like cytokine factor 1 protein (28-178AA)
Isotype:	IgG
Cross-Reactivity:	Human
Purification:	>95%, Protein G purified

Target Details

Target:	CLCF1
Alternative Name:	CLCF1 (CLCF1 Products)
Background:	Background: Cytokine with B-cell stimulating capability. Binds to and activates the ILST/gp130 receptor.

Target Details

Aliases: B cell stimulating factor 3 antibody, B-cell-stimulating factor 3 antibody, BSF 3 antibody, BSF-3 antibody, BSF3 antibody, Cardiotrophin like cytokine antibody, Cardiotrophin like cytokine factor 1 antibody, Cardiotrophin-like cytokine factor 1 antibody, CISS 2 antibody, CISS2 antibody, CLC antibody, CLCF 1 antibody, Clcf1 antibody, CLCF1_HUMAN antibody, Cold induced sweating syndrome 2 antibody, CRLF 1 associated cytokine like factor 1 antibody, CRLF1 associated cytokine like factor 1 antibody, Neurotrophin 1 antibody, Neurotrophin 1/B cell stimulating factor 3 antibody, Neurotrophin1 antibody, NNT 1 antibody, NNT-1 antibody, Novel neurotrophin 1 antibody, Novel neurotrophin-1 antibody, NR 6 antibody, NR6 antibody

UniProt: [Q9UBD9](#)

Pathways: [Regulation of Leukocyte Mediated Immunity](#), [Positive Regulation of Immune Effector Process](#), [Production of Molecular Mediator of Immune Response](#)

Application Details

Application Notes: Recommended dilution: IHC:1:200-1:500,

Restrictions: For Research Use only

Handling

Format: Liquid

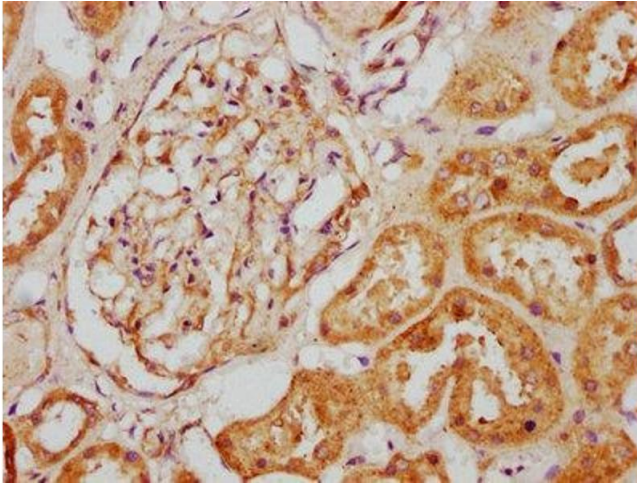
Buffer: Preservative: 0.03 % Proclin 300
Constituents: 50 % Glycerol, 0.01M PBS, pH 7.4

Preservative: ProClin

Precaution of Use: This product contains ProClin: a POISONOUS AND HAZARDOUS SUBSTANCE which should be handled by trained staff only.

Storage: -20 °C,-80 °C

Storage Comment: Upon receipt, store at -20°C or -80°C. Avoid repeated freeze.



Immunohistochemistry

Image 1. IHC image of ABIN7146821 diluted at 1:200 and staining in paraffin-embedded human kidney tissue performed on a Leica Bond™ system. After dewaxing and hydration, antigen retrieval was mediated by high pressure in a citrate buffer (pH 6.0). Section was blocked with 10 % normal goat serum 30 min at RT. Then primary antibody (1 % BSA) was incubated at 4 °C overnight. The primary is detected by a biotinylated secondary antibody and visualized using an HRP conjugated SP system.