



[Go to Product page](#)

Datasheet for ABIN7146829
anti-CPT1C antibody (AA 699-803)

3 Images

Overview

Quantity:	100 µg
Target:	CPT1C
Binding Specificity:	AA 699-803
Reactivity:	Human
Host:	Rabbit
Clonality:	Polyclonal
Conjugate:	This CPT1C antibody is un-conjugated
Application:	Western Blotting (WB), ELISA, Immunohistochemistry (IHC)

Product Details

Immunogen:	Recombinant Human Carnitine O-palmitoyltransferase 1, brain isoform protein (699-803AA)
Isotype:	IgG
Cross-Reactivity:	Human, Mouse
Purification:	>95%, Protein G purified

Target Details

Target:	CPT1C
Alternative Name:	CPT1C (CPT1C Products)
Background:	Background: May play a role in lipid metabolic process. Aliases: brain isoform antibody, Carnitine acyltransferase like protein 1 antibody, Carnitine

Target Details

acyltransferase like protein1 antibody, Carnitine O palmitoyltransferase 1 brain isoform antibody, Carnitine O palmitoyltransferase I, brain isoform antibody, Carnitine O-palmitoyltransferase 1 antibody, Carnitine O-palmitoyltransferase I antibody, Carnitine palmitoyltransferase 1, brain antibody, Carnitine palmitoyltransferase 1C antibody, Carnitine palmitoyltransferase I related C antibody, Carnitine palmitoyltransferase1C antibody, CAT L1 antibody, CATL 1 antibody, CATL1 antibody, CPT 1 like pseudogene antibody, Cpt 1c antibody, CPT 1P antibody, CPT I C antibody, CPT IC antibody, Cpt1 c antibody, CPT1 like pseudogene antibody, CPT1-B antibody, Cpt1c antibody, CPT1C_HUMAN antibody, CPT1P antibody, CPTI-B antibody, CPTIC antibody

UniProt: [Q8TCG5](#)

Pathways: [AMPK Signaling](#), [Monocarboxylic Acid Catabolic Process](#)

Application Details

Application Notes: Recommended dilution: WB:1:500-1:5000, IHC:1:20-1:200,

Restrictions: For Research Use only

Handling

Format: Liquid

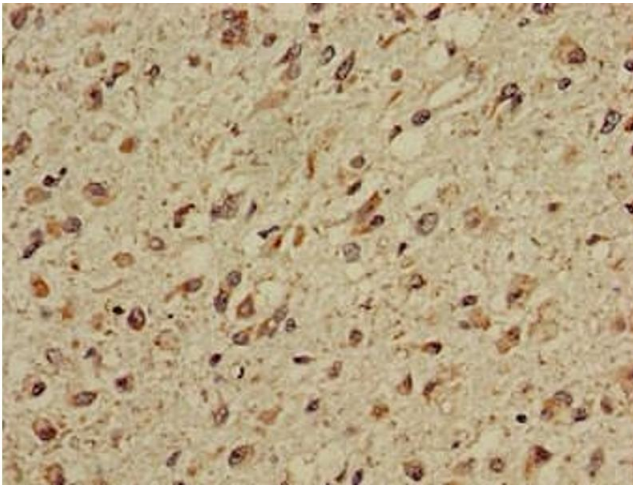
Buffer: Preservative: 0.03 % Proclin 300
Constituents: 50 % Glycerol, 0.01M PBS, pH 7.4

Preservative: ProClin

Precaution of Use: This product contains ProClin: a POISONOUS AND HAZARDOUS SUBSTANCE which should be handled by trained staff only.

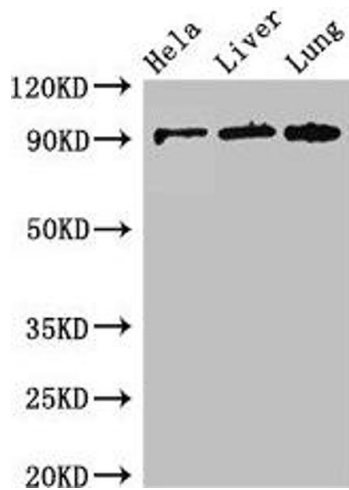
Storage: -20 °C,-80 °C

Storage Comment: Upon receipt, store at -20°C or -80°C. Avoid repeated freeze.



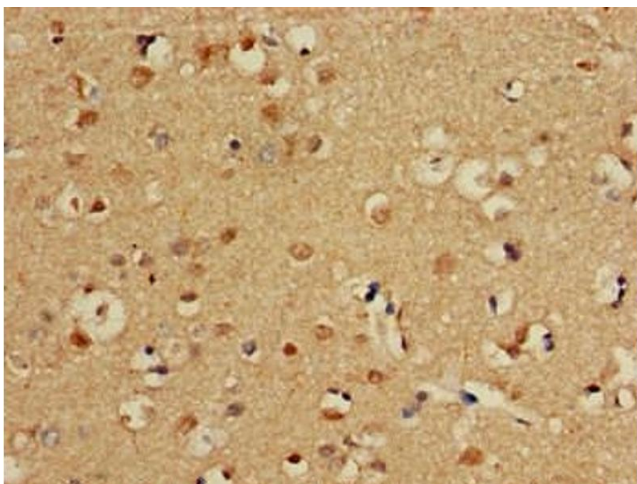
Immunohistochemistry

Image 1. Immunohistochemistry of paraffin-embedded human glioma using ABIN7146829 at dilution of 1:100



Western Blotting

Image 2. Western Blot Positive WB detected in: HeLa whole cell lysate, Mouse liver tissue, Mouse lung tissue All lanes: CPT1C antibody at 2.6 µg/mL Secondary Goat polyclonal to rabbit IgG at 1/50000 dilution Predicted band size: 91, 90, 81 kDa Observed band size: 91 kDa



Immunohistochemistry

Image 3. Immunohistochemistry of paraffin-embedded human brain tissue using ABIN7146829 at dilution of 1:100