



[Go to Product page](#)

Datasheet for ABIN7146837
anti-CPT1B antibody (AA 165-318)

3 Images

Overview

Quantity:	100 µg
Target:	CPT1B
Binding Specificity:	AA 165-318
Reactivity:	Human
Host:	Rabbit
Clonality:	Polyclonal
Conjugate:	This CPT1B antibody is un-conjugated
Application:	Western Blotting (WB), ELISA, Immunohistochemistry (IHC), Immunofluorescence (IF)

Product Details

Immunogen:	Recombinant Human Carnitine O-palmitoyltransferase 1, muscle isoform protein (165-318AA)
Isotype:	IgG
Cross-Reactivity:	Human
Purification:	>95%, Protein G purified

Target Details

Target:	CPT1B
Alternative Name:	CPT1B (CPT1B Products)
Background:	Background: mitochondrial outer membrane, mitochondrion, carnitine O-palmitoyltransferase activity, carnitine shuttle, fatty acid beta-oxidation

Target Details

Aliases: muscle isoform antibody, Carnitine O palmitoyltransferase 1B antibody, Carnitine O palmitoyltransferase I mitochondrial muscle isoform antibody, Carnitine O palmitoyltransferase I muscle isoform antibody, Carnitine O-palmitoyltransferase 1, muscle isoform antibody, Carnitine O-palmitoyltransferase I antibody, Carnitine palmitoyltransferase 1A (muscle) antibody, Carnitine palmitoyltransferase 1B (muscle) antibody, Carnitine palmitoyltransferase 1B antibody, Carnitine palmitoyltransferase I like protein antibody, Carnitine palmitoyltransferase I muscle antibody, Carnitine palmitoyltransferase I-like protein antibody, CPT 1B antibody, CPT I antibody, CPT1 M antibody, CPT1 muscle antibody, CPT1-M antibody, Cpt1b antibody, CPT1B_HUMAN antibody, CPT1M antibody, CPTI antibody, CPTI M antibody, CPTI muscle antibody, CPTI-M antibody, CPTIM antibody, FLJ55729 antibody, FLJ58750 antibody, KIAA1670 antibody, M CPT1 antibody, M-CPT1 antibody, MCCPT1 antibody, MCPT1 antibody

UniProt: [Q92523](#)

Pathways: [AMPK Signaling](#), [Monocarboxylic Acid Catabolic Process](#)

Application Details

Application Notes: Recommended dilution: WB:1:500-1:5000, IHC:1:20-1:200, IF:1:50-1:200,

Restrictions: For Research Use only

Handling

Format: Liquid

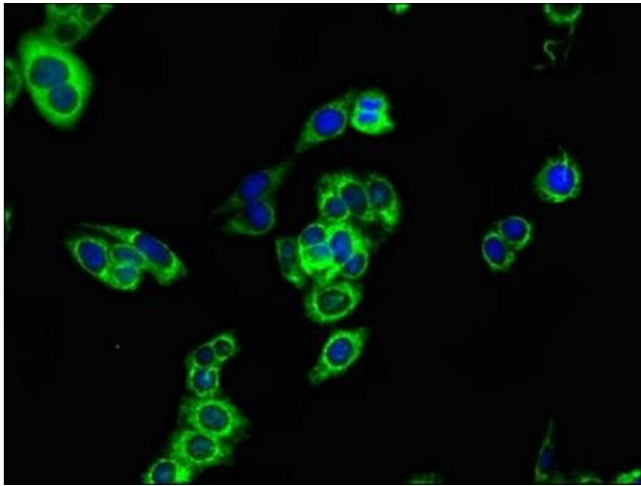
Buffer: Preservative: 0.03 % Proclin 300
Constituents: 50 % Glycerol, 0.01M PBS, PH 7.4

Preservative: ProClin

Precaution of Use: This product contains ProClin: a POISONOUS AND HAZARDOUS SUBSTANCE which should be handled by trained staff only.

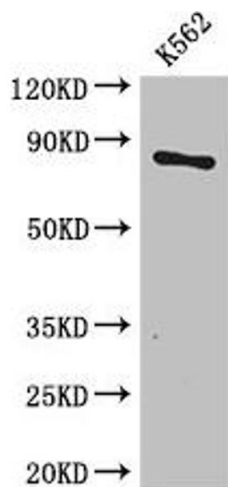
Storage: -20 °C,-80 °C

Storage Comment: Upon receipt, store at -20°C or -80°C. Avoid repeated freeze.



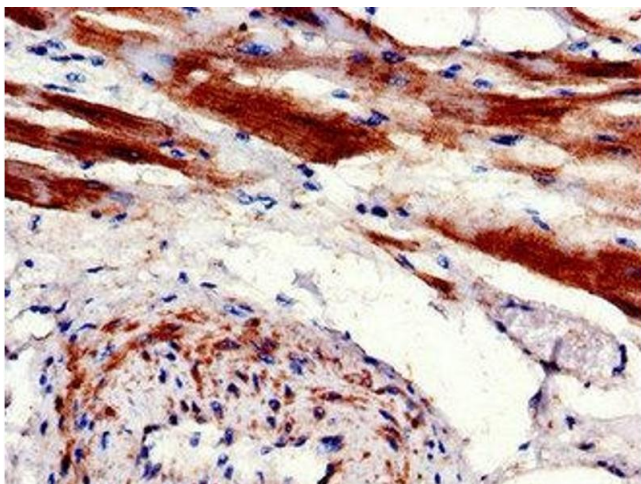
Immunofluorescence

Image 1. Immunofluorescent analysis of HepG2 cells using ABIN7146837 at dilution of 1:100 and Alexa Fluor 488-conjugated AffiniPure Goat Anti-Rabbit IgG(H+L)



Western Blotting

Image 2. Western Blot Positive WB detected in: K562 whole cell lysate All lanes: CPT1B antibody at 3.4 µg/mL Secondary Goat polyclonal to rabbit IgG at 1/50000 dilution Predicted band size: 88, 67, 84, 79 kDa Observed band size: 88 kDa



Immunohistochemistry

Image 3. Immunohistochemistry of paraffin-embedded human heart tissue using ABIN7146837 at dilution of 1:100