

Datasheet for ABIN7146845
anti-CRTAC1 antibody (AA 309-661)



[Go to Product page](#)

1 Image

Overview

Quantity:	100 µL
Target:	CRTAC1
Binding Specificity:	AA 309-661
Reactivity:	Human
Host:	Rabbit
Clonality:	Polyclonal
Conjugate:	This CRTAC1 antibody is un-conjugated
Application:	Western Blotting (WB), ELISA

Product Details

Immunogen:	Recombinant Human Cartilage acidic protein 1 protein (309-661AA)
Isotype:	IgG
Cross-Reactivity:	Human
Purification:	Antigen Affinity Purified

Target Details

Target:	CRTAC1
Alternative Name:	CRTAC1 (CRTAC1 Products)
Background:	Background: extracellular exosome Aliases: 68 kDa chondrocyte expressed protein antibody, 68 kDa chondrocyte-expressed protein

Target Details

antibody, Acidic secreted protein in cartilage antibody, ASPIC antibody, ASPIC1 antibody, Cartilage acidic protein 1 antibody, Cartilage acidic protein 1 precursor antibody, CEP 68 antibody, CEP-68 antibody, CEP68 antibody, Chondrocyte expressed protein 68 kDa CEP 68 antibody, CRAC1_HUMAN antibody, CRTAC1 antibody, Protein CRTAC1-B antibody, W307 antibody

UniProt: [Q9NQ79](#)

Application Details

Application Notes: Recommended dilution: WB:1:500-1:2000,

Restrictions: For Research Use only

Handling

Format: Liquid

Buffer: Preservative: 0.03 % Proclin 300
Constituents: 50 % Glycerol, 0.01M PBS, pH 7.4

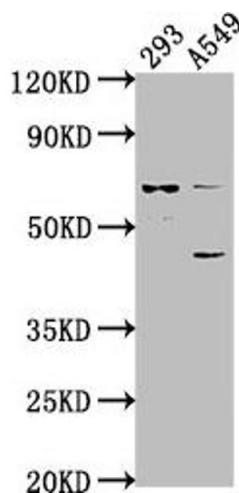
Preservative: ProClin

Precaution of Use: This product contains ProClin: a POISONOUS AND HAZARDOUS SUBSTANCE which should be handled by trained staff only.

Storage: -20 °C,-80 °C

Storage Comment: Upon receipt, store at -20°C or -80°C. Avoid repeated freeze.

Images



Western Blotting

Image 1. Western Blot Positive WB detected in: 293 whole cell lysate, A549 whole cell lysate All lanes: CRTAC1 antibody at 1:1000 Secondary Goat polyclonal to rabbit IgG at 1/50000 dilution Predicted band size: 72, 71, 69 kDa Observed band size: 72 kDa