



[Go to Product page](#)

Datasheet for ABIN7146850  
**anti-COMP antibody (AA 20-160)**

1 Image

### Overview

|                      |                                     |
|----------------------|-------------------------------------|
| Quantity:            | 100 µL                              |
| Target:              | COMP                                |
| Binding Specificity: | AA 20-160                           |
| Reactivity:          | Human                               |
| Host:                | Rabbit                              |
| Clonality:           | Polyclonal                          |
| Conjugate:           | This COMP antibody is un-conjugated |
| Application:         | Western Blotting (WB), ELISA        |

### Product Details

|                   |  |
|-------------------|--|
| Immunogen:        | Recombinant Human Cartilage oligomeric matrix protein (20-160AA) |
| Isotype:          | IgG  |
| Cross-Reactivity: | Human, Mouse   |
| Purification:     | Antigen Affinity Purified  |

### Target Details

|                   |  |
|-------------------|--|
| Target:           | COMP   |
| Alternative Name: | COMP ( <a href="#">COMP Products</a> )   |
| Background:       | Background: May play a role in the structural integrity of cartilage via its interaction with other extracellular matrix proteins such as the collagens and fibronectin. Can mediate the interaction |

## Target Details

---

of chondrocytes with the cartilage extracellular matrix through interaction with cell surface integrin receptors. Could play a role in the pathogenesis of osteoarthritis. Potent suppressor of apoptosis in both primary chondrocytes and transformed cells. Suppresses apoptosis by blocking the activation of caspase-3 and by inducing the IAP family of survival proteins (BIRC3, BIRC2, BIRC5 and XIAP). Essential for maintaining a vascular smooth muscle cells (VSMCs) contractile/differentiated phenotype under physiological and pathological stimuli. Maintains this phenotype of VSMCs by interacting with ITGA7.

Aliases: cartilage oligomeric matrix protein (pseudoachondroplasia, epiphyseal dysplasia 1, multiple) antibody, Cartilage oligomeric matrix protein antibody, Cartilage oligomeric matrix protein precursor antibody, COMP antibody, COMP\_HUMAN antibody, EDM 1 antibody, EDM1 antibody, EPD 1 antibody, EPD1 antibody, Epiphyseal dysplasia 1 antibody, Epiphyseal dysplasia 1 multiple antibody, Epiphyseal dysplasia multiple 1 antibody, MED antibody, MGC13181 antibody, MGC149768 antibody, PSACH antibody, pseudoachondroplasia (epiphyseal dysplasia 1, multiple) antibody, Pseudoachondroplasia antibody, THBS 5 antibody, THBS5 antibody, Thrombospondin 5 antibody, Thrombospondin-5 antibody, Thrombospondin5 antibody, TSP5 antibody

---

UniProt: [P49747](#)

## Application Details

---

Application Notes: Recommended dilution: WB:1:500-1:2000,

Restrictions: For Research Use only

## Handling

---

Format: Liquid

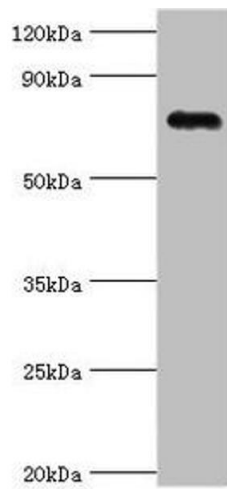
Buffer: PBS with 0.02 % sodium azide, 50 % glycerol, pH 7.3.

Preservative: Sodium azide

Precaution of Use: This product contains Sodium azide: a POISONOUS AND HAZARDOUS SUBSTANCE which should be handled by trained staff only.

Storage: -20 °C,-80 °C

Storage Comment: Upon receipt, store at -20°C or -80°C. Avoid repeated freeze.



### Western Blotting

**Image 1.** Western blot All lanes: Cartilage oligomeric matrix protein antibody at 4 µg/mL + Mouse skeletal muscle tissue Secondary Goat polyclonal to rabbit IgG at 1/10000 dilution Predicted band size: 83, 78 kDa Observed band size: 83 kDa