



[Go to Product page](#)

Datasheet for ABIN7146851
anti-CRTAP antibody (AA 20-240)

3 Images

Overview

| | |
|----------------------|--|
| Quantity: | 100 µL |
| Target: | CRTAP |
| Binding Specificity: | AA 20-240 |
| Reactivity: | Human |
| Host: | Rabbit |
| Clonality: | Polyclonal |
| Conjugate: | This CRTAP antibody is un-conjugated |
| Application: | Western Blotting (WB), Immunohistochemistry (IHC), ELISA |

Product Details

| | |
|-------------------|---|
| Immunogen: | Recombinant Human Cartilage-associated protein (20-240AA) |
| Isotype: | IgG |
| Cross-Reactivity: | Human |
| Purification: | Antigen Affinity Purified |

Target Details

| | |
|-------------------|--|
| Target: | CRTAP |
| Alternative Name: | CRTAP (CRTAP Products) |
| Background: | Background: Necessary for efficient 3-hydroxylation of fibrillar collagen prolyl residues. Aliases: CRTAP antibody, CASPCartilage-associated protein antibody |

Target Details

UniProt: [O75718](#)

Application Details

Application Notes: Recommended dilution: WB:1:1000-1:5000, IHC:1:20-1:200,

Restrictions: For Research Use only

Handling

Format: Liquid

Buffer: PBS with 0.02 % sodium azide, 50 % glycerol, pH 7.3.

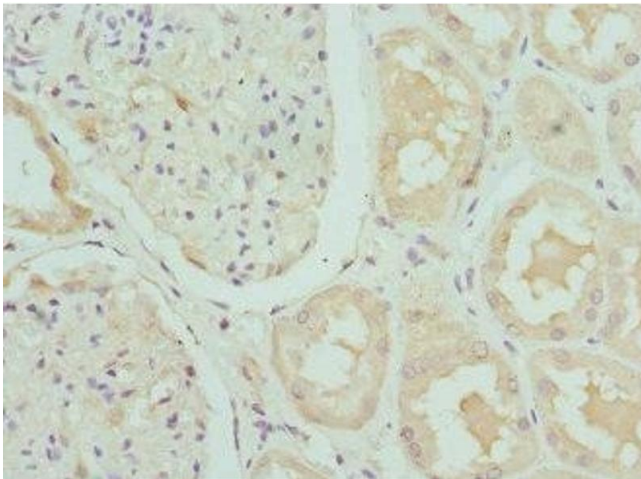
Preservative: Sodium azide

Precaution of Use: This product contains Sodium azide: a POISONOUS AND HAZARDOUS SUBSTANCE which should be handled by trained staff only.

Storage: -20 °C,-80 °C

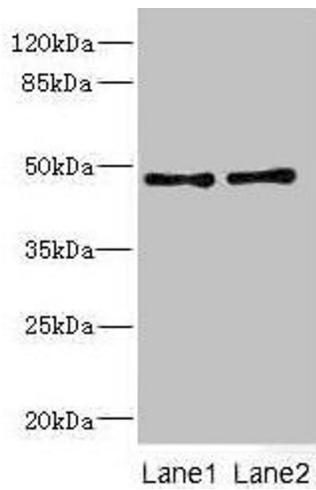
Storage Comment: Upon receipt, store at -20°C or -80°C. Avoid repeated freeze.

Images



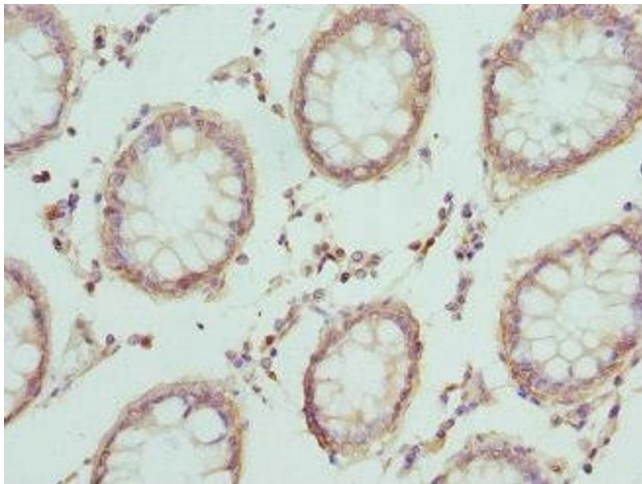
Immunohistochemistry

Image 1. Immunohistochemistry of paraffin-embedded human kidney tissue using ABIN7146851 at dilution of 1:100



Western Blotting

Image 2. Western blot All lanes: CRTAP antibody at 0.96 μ g/mL Lane 1: 293T whole cell lysate Lane 2: Hela whole cell lysate Secondary Goat polyclonal to rabbit IgG at 1/10000 dilution Predicted band size: 47 kDa Observed band size: 47 kDa



Immunohistochemistry

Image 3. Immunohistochemistry of paraffin-embedded human colon cancer using ABIN7146851 at dilution of 1:100