

Datasheet for ABIN7146858

anti-Casein Kinase 1 delta antibody (Isoform delta)**6** Images[Go to Product page](#)

Overview

Quantity:	100 µg
Target:	Casein Kinase 1 delta (CSNK1D)
Binding Specificity:	AA 152-398, Isoform delta
Reactivity:	Human
Host:	Rabbit
Clonality:	Polyclonal
Conjugate:	This Casein Kinase 1 delta antibody is un-conjugated
Application:	Western Blotting (WB), ELISA, Immunohistochemistry (IHC), Immunoprecipitation (IP), Immunofluorescence (IF)

Product Details

Immunogen:	Recombinant Human Casein kinase I isoform delta protein (152-398AA)
Isotype:	IgG
Cross-Reactivity:	Human, Mouse, Rat
Purification:	>95%, Protein G purified

Target Details

Target:	Casein Kinase 1 delta (CSNK1D)
Alternative Name:	CSNK1D (CSNK1D Products)
Background:	Background: Essential serine/threonine-protein kinase that regulates diverse cellular growth

Target Details

and survival processes including Wnt signaling, DNA repair and circadian rhythms. It can phosphorylate a large number of proteins. Casein kinases are operationally defined by their preferential utilization of acidic proteins such as caseins as substrates. Phosphorylates connexin-43/GJA1, MAP1A, SNAPIN, MAPT/TAU, TOP2A, DCK, HIF1A, EIF6, p53/TP53, DVL2, DVL3, ESR1, AIB1/NCOA3, DNMT1, PKD2, YAP1, PER1 and PER2. Central component of the circadian clock. In balance with PP1, determines the circadian period length through the regulation of the speed and rhythmicity of PER1 and PER2 phosphorylation. Controls PER1 and PER2 nuclear transport and degradation. YAP1 phosphorylation promotes its SCF(beta-TRCP) E3 ubiquitin ligase-mediated ubiquitination and subsequent degradation. DNMT1 phosphorylation reduces its DNA-binding activity. Phosphorylation of ESR1 and AIB1/NCOA3 stimulates their activity and coactivation. Phosphorylation of DVL2 and DVL3 regulates WNT3A signaling pathway that controls neurite outgrowth. EIF6 phosphorylation promotes its nuclear export. Triggers down-regulation of dopamine receptors in the forebrain. Activates DCK in vitro by phosphorylation. TOP2A phosphorylation favors DNA cleavable complex formation. May regulate the formation of the mitotic spindle apparatus in extravillous trophoblast. Modulates connexin-43/GJA1 gap junction assembly by phosphorylation. Probably involved in lymphocyte physiology. Regulates fast synaptic transmission mediated by glutamate.

Aliases: Casein Kinase 1 delta antibody, Casein kinase I delta isoform antibody, Casein kinase I isoform delta antibody, CKI delta antibody, CKI-delta antibody, CKId antibody, CKIdelta antibody, CSNK 1D antibody, CSNK1D antibody, HCKID antibody, KC1D_HUMAN antibody, Protein kinase CK1 delta antibody

UniProt: [P48730](#)

Pathways: [Hedgehog Signaling, M Phase](#)

Application Details

Application Notes: Recommended dilution: WB:1:1000-1:5000, IHC:1:1000-1:2000, IF:1:200-1:500, IP:1:200-1:2000,

Restrictions: For Research Use only

Handling

Format: Liquid

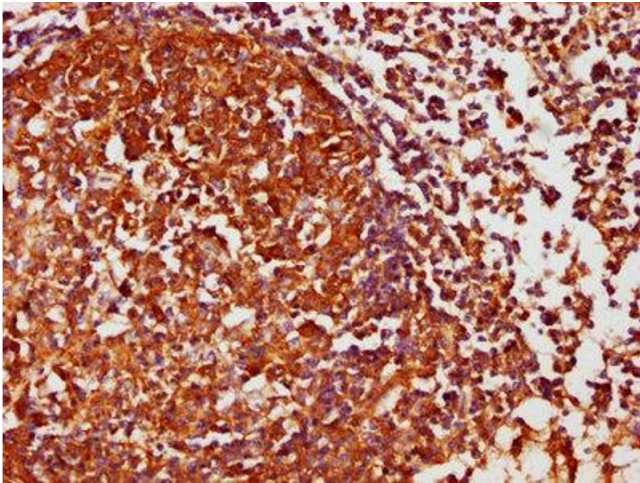
Buffer: Preservative: 0.03 % Proclin 300
Constituents: 50 % Glycerol, 0.01M PBS, PH 7.4

Preservative: ProClin

Handling

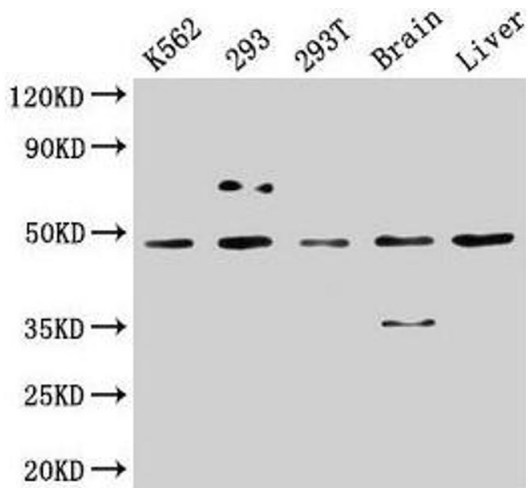
Precaution of Use:	This product contains ProClin: a POISONOUS AND HAZARDOUS SUBSTANCE which should be handled by trained staff only.
Storage:	-20 °C,-80 °C
Storage Comment:	Upon receipt, store at -20°C or -80°C. Avoid repeated freeze.

Images



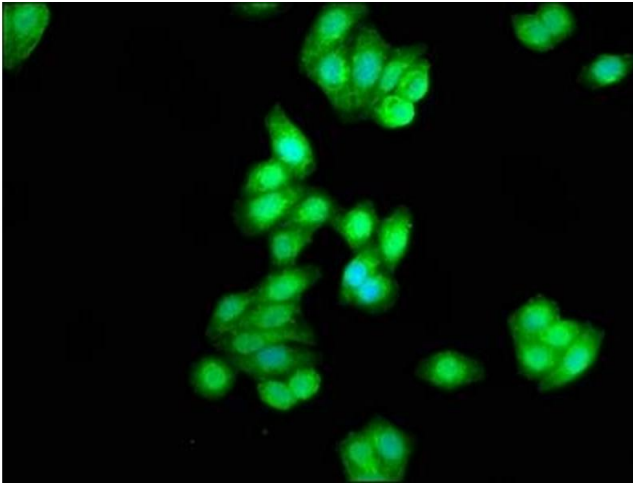
Immunohistochemistry

Image 1. IHC image of ABIN7146858 diluted at 1:1000 and staining in paraffin-embedded human lymph node tissue performed on a Leica Bond™ system. After dewaxing and hydration, antigen retrieval was mediated by high pressure in a citrate buffer (pH 6.0). Section was blocked with 10% normal goat serum 30min at RT. Then primary antibody (1% BSA) was incubated at 4°C overnight. The primary is detected by a biotinylated secondary antibody and visualized using an HRP conjugated SP system.



Western Blotting

Image 2. Western Blot Positive WB detected in: K562 whole cell lysate, 293 whole cell lysate, 293T whole cell lysate, Rat brain tissue, Mouse liver tissue All lanes: CSNK1D antibody at 5 µg/mL Secondary Goat polyclonal to rabbit IgG at 1/50000 dilution Predicted band size: 48, 47 kDa Observed band size: 48 kDa



Immunofluorescence

Image 3. Immunofluorescence staining of HepG2 cells with ABIN7146858 at 1:333, counter-stained with DAPI. The cells were fixed in 4% formaldehyde, permeabilized using 0.2% Triton X-100 and blocked in 10% normal Goat Serum. The cells were then incubated with the antibody overnight at 4°C. The secondary antibody was Alexa Fluor 488-conjugated AffiniPure Goat Anti-Rabbit IgG(H+L).

Please check the [product details page](#) for more images. Overall 6 images are available for ABIN7146858.