

Datasheet for ABIN7146862

anti-CK1 epsilon antibody (Isoform epsilon)**3** Images[Go to Product page](#)

Overview

Quantity:	100 µg
Target:	CK1 epsilon (CSNK1E)
Binding Specificity:	AA 1-416, Isoform epsilon
Reactivity:	Human
Host:	Rabbit
Clonality:	Polyclonal
Conjugate:	This CK1 epsilon antibody is un-conjugated
Application:	Western Blotting (WB), ELISA, Immunohistochemistry (IHC), Immunofluorescence (IF)

Product Details

Immunogen:	Recombinant Human Casein kinase I isoform epsilon protein (1-416AA)
Isotype:	IgG
Cross-Reactivity:	Human
Purification:	>95%, Protein G purified

Target Details

Target:	CK1 epsilon (CSNK1E)
Alternative Name:	CSNK1E (CSNK1E Products)
Background:	Background: Casein kinases are operationally defined by their preferential utilization of acidic proteins such as caseins as substrates. Can phosphorylate a large number of proteins.

Target Details

Participates in Wnt signaling. Phosphorylates DVL1. Central component of the circadian clock. In balance with PP1, determines the circadian period length, through the regulation of the speed and rhythmicity of PER1 and PER2 phosphorylation. Controls PER1 and PER2 nuclear transport and degradation. Inhibits cytokine-induced granulocyte differentiation.

Aliases: Casein kinase 1 epsilon antibody, Casein kinase I antibody, Casein kinase I epsilon antibody, Casein kinase I isoform epsilon antibody, CKI epsilon antibody, CKI-epsilon antibody, CKIe antibody, CKIepsilon antibody, CSNK 1E antibody, CSNK1E antibody, DBT antibody, Doubletime, Drosophila, homolog of antibody, EC 2.7.11.1 antibody, epsilon isoform antibody, HCK IE antibody, KC1E antibody, KC1E_HUMAN antibody, kinase CK1 epsilon antibody, MGC 10398 antibody

UniProt: [P49674](#)

Pathways: [Hedgehog Signaling, M Phase](#)

Application Details

Application Notes: Recommended dilution: WB:1:500-1:5000, IHC:1:500-1:1000, IF:1:200-1:500,

Restrictions: For Research Use only

Handling

Format: Liquid

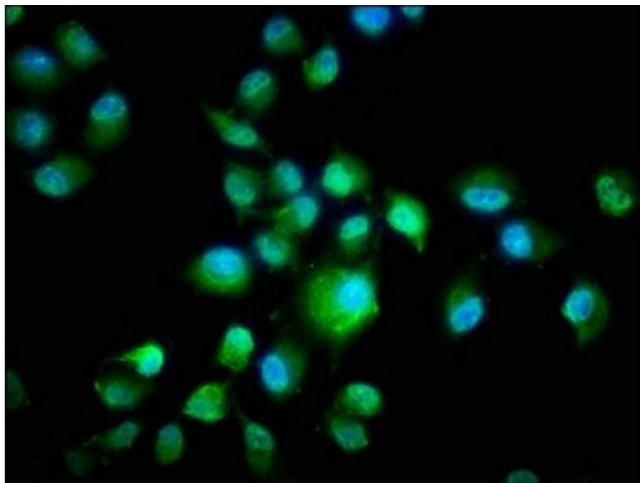
Buffer: Preservative: 0.03 % Proclin 300
Constituents: 50 % Glycerol, 0.01M PBS, PH 7.4

Preservative: ProClin

Precaution of Use: This product contains ProClin: a POISONOUS AND HAZARDOUS SUBSTANCE which should be handled by trained staff only.

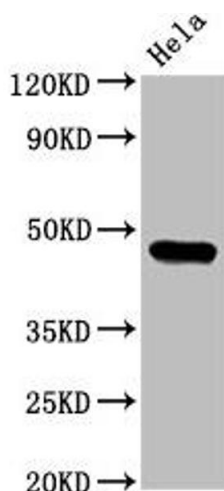
Storage: -20 °C,-80 °C

Storage Comment: Upon receipt, store at -20°C or -80°C. Avoid repeated freeze.



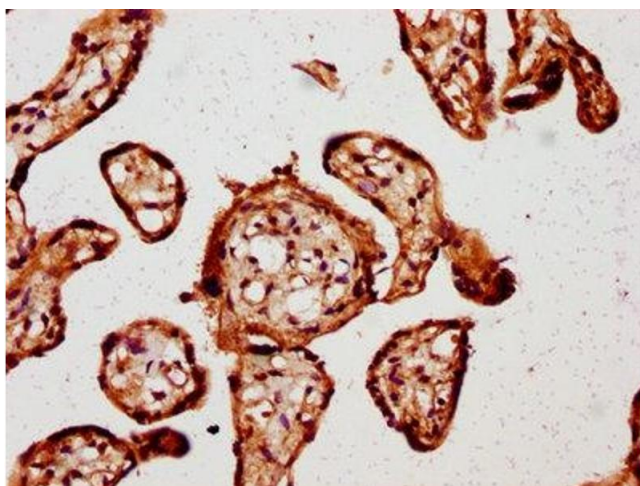
Immunofluorescence

Image 1. Immunofluorescence staining of HeLa cells with ABIN7146862 at 1:266, counter-stained with DAPI. The cells were fixed in 4% formaldehyde, permeabilized using 0.2% Triton X-100 and blocked in 10% normal Goat Serum. The cells were then incubated with the antibody overnight at 4°C. The secondary antibody was Alexa Fluor 488-conjugated AffiniPure Goat Anti-Rabbit IgG(H+L).



Western Blotting

Image 2. Western Blot Positive WB detected in: HeLa whole cell lysate All lanes: CSNK1E antibody at 3.2 µg/mL Secondary Goat polyclonal to rabbit IgG at 1/50000 dilution Predicted band size: 48 kDa Observed band size: 48 kDa



Immunohistochemistry

Image 3. IHC image of ABIN7146862 diluted at 1:800 and staining in paraffin-embedded human placenta tissue performed on a Leica Bond™ system. After dewaxing and hydration, antigen retrieval was mediated by high pressure in a citrate buffer (pH 6.0). Section was blocked with 10% normal goat serum 30min at RT. Then primary antibody (1% BSA) was incubated at 4°C overnight. The primary is detected by a biotinylated secondary antibody and visualized using an HRP conjugated SP system.