

Datasheet for ABIN7146866
anti-CK1 epsilon antibody (Isoform epsilon)[Go to Product page](#)

3 Images

Overview

Quantity:	100 µg
Target:	CK1 epsilon (CSNK1E)
Binding Specificity:	AA 17-231, Isoform epsilon
Reactivity:	Human
Host:	Rabbit
Clonality:	Polyclonal
Conjugate:	This CK1 epsilon antibody is un-conjugated
Application:	Western Blotting (WB), ELISA, Immunohistochemistry (IHC)

Product Details

Immunogen:	Recombinant Human Casein kinase I isoform epsilon protein (17-231AA)
Isotype:	IgG
Cross-Reactivity:	Human
Purification:	>95%, Protein G purified

Target Details

Target:	CK1 epsilon (CSNK1E)
Alternative Name:	CSNK1E (CSNK1E Products)
Background:	Background: Casein kinases are operationally defined by their preferential utilization of acidic proteins such as caseins as substrates. Can phosphorylate a large number of proteins.

Target Details

Participates in Wnt signaling. Phosphorylates DVL1. Central component of the circadian clock. May act as a negative regulator of circadian rhythmicity by phosphorylating PER1 and PER2. Retains PER1 in the cytoplasm. Inhibits cytokine-induced granulocyte differentiation.

Aliases: Casein kinase 1 epsilon antibody, Casein kinase I antibody, Casein kinase I epsilon antibody, Casein kinase I isoform epsilon antibody, CKI epsilon antibody, CKI-epsilon antibody, CKIe antibody, CKIepsilon antibody, CSNK 1E antibody, CSNK1E antibody, DBT antibody, Doubletime, Drosophila, homolog of antibody, EC 2.7.11.1 antibody, epsilon isoform antibody, HCK IE antibody, KC1E antibody, KC1E_HUMAN antibody, kinase CK1 epsilon antibody, MGC 10398 antibody

UniProt: [P49674](#)

Pathways: [Hedgehog Signaling, M Phase](#)

Application Details

Application Notes: Recommended dilution: WB:1:1000-1:5000, IHC:1:20-1:200,

Restrictions: For Research Use only

Handling

Format: Liquid

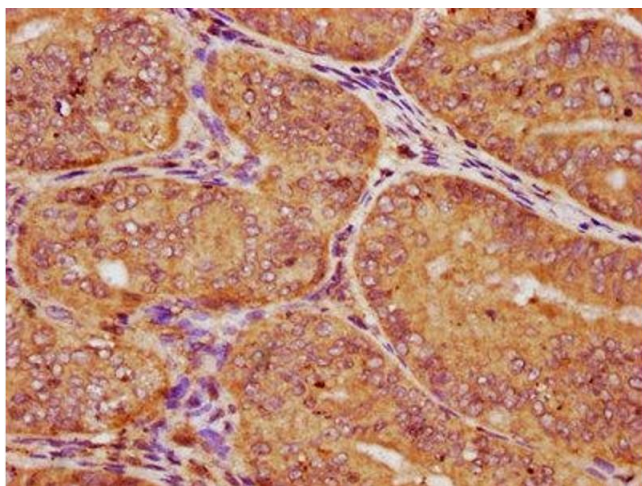
Buffer: Preservative: 0.03 % Proclin 300
Constituents: 50 % Glycerol, 0.01M PBS, PH 7.4

Preservative: ProClin

Precaution of Use: This product contains ProClin: a POISONOUS AND HAZARDOUS SUBSTANCE which should be handled by trained staff only.

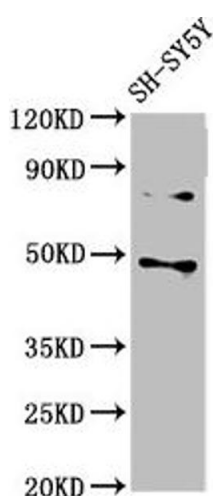
Storage: -20 °C,-80 °C

Storage Comment: Upon receipt, store at -20°C or -80°C. Avoid repeated freeze.



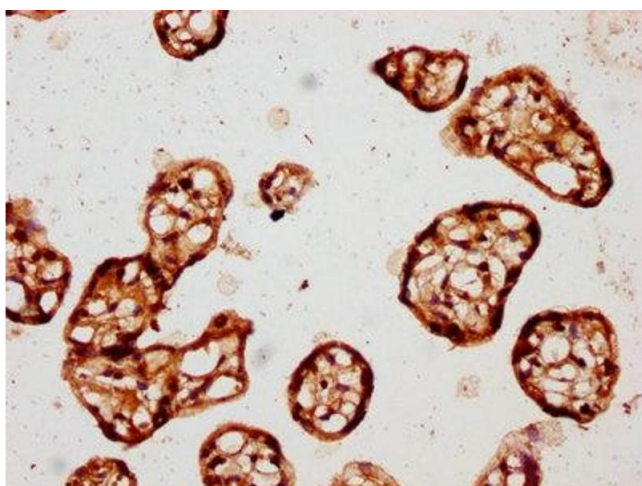
Immunohistochemistry

Image 1. IHC image of ABIN7146866 diluted at 1:150 and staining in paraffin-embedded human endometrial cancer performed on a Leica Bond™ system. After dewaxing and hydration, antigen retrieval was mediated by high pressure in a citrate buffer (pH 6.0). Section was blocked with 10% normal goat serum 30min at RT. Then primary antibody (1% BSA) was incubated at 4°C overnight. The primary is detected by a biotinylated secondary antibody and visualized using an HRP conjugated SP system.



Western Blotting

Image 2. Western Blot Positive WB detected in: SH-SY5Y whole cell lysate All lanes: CSNK1E antibody at 3 µg/mL Secondary Goat polyclonal to rabbit IgG at 1/50000 dilution Predicted band size: 48 kDa Observed band size: 48 kDa



Immunohistochemistry

Image 3. IHC image of ABIN7146866 diluted at 1:150 and staining in paraffin-embedded human placenta tissue performed on a Leica Bond™ system. After dewaxing and hydration, antigen retrieval was mediated by high pressure in a citrate buffer (pH 6.0). Section was blocked with 10% normal goat serum 30min at RT. Then primary antibody (1% BSA) was incubated at 4°C overnight. The primary is detected by a biotinylated secondary antibody and visualized using an HRP conjugated SP system.