

Datasheet for ABIN7146870

anti-CSNK1G1 antibody (Isoform gamma 1)**2** Images[Go to Product page](#)

Overview

Quantity:	100 µg
Target:	CSNK1G1
Binding Specificity:	AA 1-125, Isoform gamma 1
Reactivity:	Human
Host:	Rabbit
Clonality:	Polyclonal
Conjugate:	This CSNK1G1 antibody is un-conjugated
Application:	Western Blotting (WB), ELISA, Immunohistochemistry (IHC)

Product Details

Immunogen:	Recombinant Human Casein kinase I isoform gamma-1 protein (1-125AA)
Isotype:	IgG
Cross-Reactivity:	Human
Purification:	>95%, Protein G purified

Target Details

Target:	CSNK1G1
Alternative Name:	CSNK1G1 (CSNK1G1 Products)
Background:	Background: Serine/threonine-protein kinase. Casein kinases are operationally defined by their preferential utilization of acidic proteins such as caseins as substrates. It can phosphorylate a

Target Details

large number of proteins. Participates in Wnt signaling. Regulates fast synaptic transmission mediated by glutamate (By similarity). Phosphorylates CLSPN.

Aliases: 9130020E21Rik antibody, Casein kinase 1 gamma 1 antibody, Casein kinase I isoform gamma 1 antibody, Casein kinase I isoform gamma-1 antibody, CKI gamma 1 antibody, CKI-gamma 1 antibody, CSNK1G1 antibody, EC 2.7.11.1 antibody, KC1G1_HUMAN antibody

UniProt: [Q9HCP0](#)

Pathways: [Hedgehog Signaling](#)

Application Details

Application Notes: Recommended dilution: WB:1:500-1:5000, IHC:1:200-1:500,

Restrictions: For Research Use only

Handling

Format: Liquid

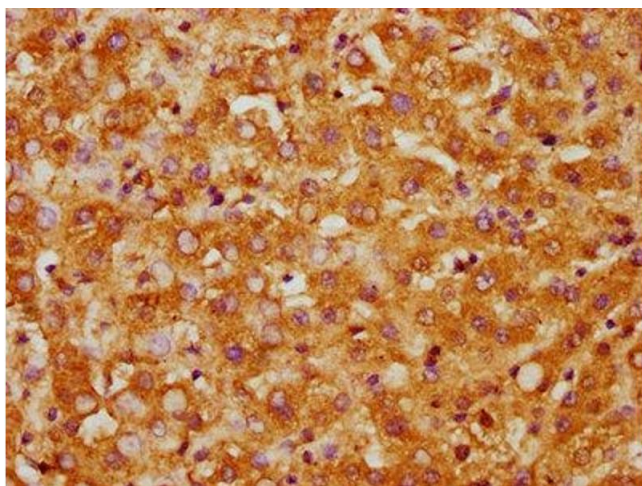
Buffer: Preservative: 0.03 % Proclin 300
Constituents: 50 % Glycerol, 0.01M PBS, pH 7.4

Preservative: ProClin

Precaution of Use: This product contains ProClin: a POISONOUS AND HAZARDOUS SUBSTANCE which should be handled by trained staff only.

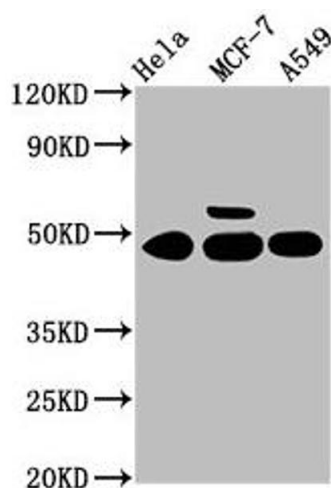
Storage: -20 °C,-80 °C

Storage Comment: Upon receipt, store at -20°C or -80°C. Avoid repeated freeze.



Immunohistochemistry

Image 1. IHC image of ABIN7146870 diluted at 1:300 and staining in paraffin-embedded human liver tissue performed on a Leica Bond™ system. After dewaxing and hydration, antigen retrieval was mediated by high pressure in a citrate buffer (pH 6.0). Section was blocked with 10% normal goat serum 30min at RT. Then primary antibody (1% BSA) was incubated at 4°C overnight. The primary is detected by a biotinylated secondary antibody and visualized using an HRP conjugated SP system.



Western Blotting

Image 2. Western Blot Positive WB detected in: HeLa whole cell lysate, MCF-7 whole cell lysate, A549 whole cell lysate. All lanes: CSNK1G1 antibody at 3.4 µg/mL. Secondary Goat polyclonal to rabbit IgG at 1/50000 dilution. Predicted band size: 49, 46 kDa. Observed band size: 49 kDa.