



[Go to Product page](#)

Datasheet for ABIN7146907
anti-CARD14 antibody (AA 249-523)

3 Images

Overview

Quantity:	100 µg
Target:	CARD14
Binding Specificity:	AA 249-523
Reactivity:	Human
Host:	Rabbit
Clonality:	Polyclonal
Conjugate:	This CARD14 antibody is un-conjugated
Application:	ELISA, Immunohistochemistry (IHC), Immunofluorescence (IF)

Product Details

Immunogen:	Recombinant Human Caspase recruitment domain-containing protein 14 protein (249-523AA)
Isotype:	IgG
Cross-Reactivity:	Human
Purification:	>95%, Protein G purified

Target Details

Target:	CARD14
Alternative Name:	CARD14 (CARD14 Products)
Background:	Background: Plays a role in signaling mediated by TRAF2, TRAF3 and TRAF6 and protects cells against apoptosis. Activates NF-kappa-B via BCL10 and IKK. Stimulates the phosphorylation of

Target Details

BCL10.

Aliases: Bcl10 interacting MAGUK protein 2 antibody, Bimp 2 antibody, Bimp2 antibody, CAR14_HUMAN antibody, CARD 14 antibody, CARD containing MAGUK 2 protein antibody, CARD containing MAGUK protein 2 antibody, Card maguk protein 2 antibody, CARD-containing MAGUK protein 2 antibody, CARD14 antibody, Carma 2 antibody, Carma2 antibody, Caspase recruitment domain containing protein 14 antibody, Caspase recruitment domain family member 14 antibody, Caspase recruitment domain protein 14 antibody, Caspase recruitment domain-containing protein 14 antibody, PRP antibody, PSORS2 antibody, PSS1 antibody

UniProt: [Q9BXL6](#)

Application Details

Application Notes: Recommended dilution: IHC:1:20-1:200, IF:1:50-1:200,

Restrictions: For Research Use only

Handling

Format: Liquid

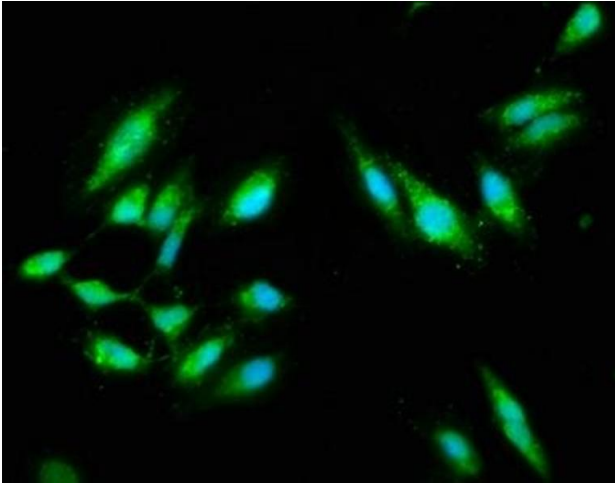
Buffer: Preservative: 0.03 % Proclin 300
Constituents: 50 % Glycerol, 0.01M PBS, pH 7.4

Preservative: ProClin

Precaution of Use: This product contains ProClin: a POISONOUS AND HAZARDOUS SUBSTANCE which should be handled by trained staff only.

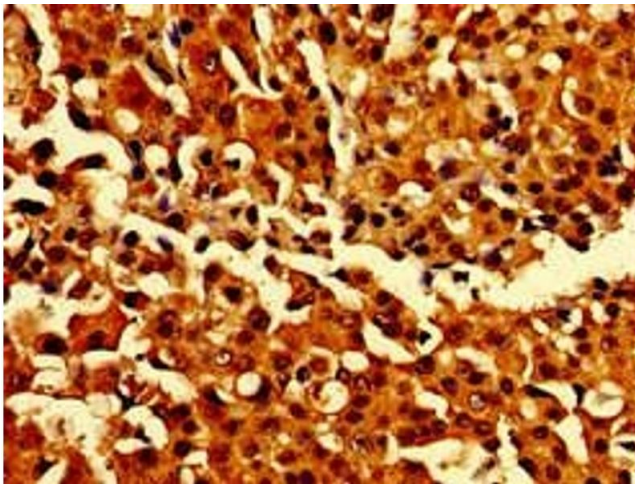
Storage: -20 °C,-80 °C

Storage Comment: Upon receipt, store at -20°C or -80°C. Avoid repeated freeze.



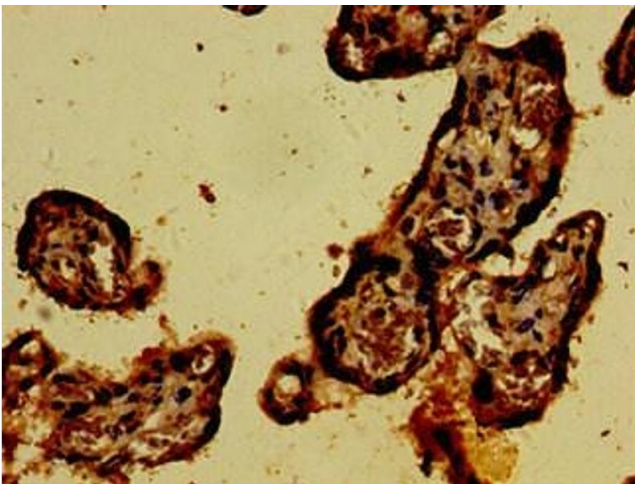
Immunofluorescence

Image 1. Immunofluorescence staining of HeLa cells with ABIN7146907 at 1:100, counter-stained with DAPI. The cells were fixed in 4% formaldehyde, permeabilized using 0.2% Triton X-100 and blocked in 10% normal Goat Serum. The cells were then incubated with the antibody overnight at 4°C. The secondary antibody was Alexa Fluor 488-conjugated AffiniPure Goat Anti-Rabbit IgG(H+L).



Immunohistochemistry

Image 2. Immunohistochemistry of paraffin-embedded human breast cancer using ABIN7146907 at dilution of 1:100



Immunohistochemistry

Image 3. Immunohistochemistry of paraffin-embedded human placenta tissue using ABIN7146907 at dilution of 1:100