



[Go to Product page](#)

Datasheet for ABIN7146925

anti-Caspase 1 antibody (AA 120-269)

3 Images

Overview

Quantity:	100 µg
Target:	Caspase 1 (CASP1)
Binding Specificity:	AA 120-269
Reactivity:	Human
Host:	Rabbit
Clonality:	Polyclonal
Conjugate:	This Caspase 1 antibody is un-conjugated
Application:	Immunohistochemistry (IHC), ELISA

Product Details

Immunogen:	Recombinant Human Caspase-1 protein (120-269AA)
Isotype:	IgG
Cross-Reactivity:	Human
Purification:	>95%, Protein G purified

Target Details

Target:	Caspase 1 (CASP1)
Alternative Name:	CASP1 (CASP1 Products)
Background:	Background: Thiol protease that cleaves IL-1 beta between an Asp and an Ala, releasing the mature cytokine which is involved in a variety of inflammatory processes. Important for defense

Target Details

against pathogens. Cleaves and activates sterol regulatory element binding proteins (SREBPs).
Can also promote apoptosis.

Aliases: CASP-1 antibody, CASP1 antibody, CASP1_HUMAN antibody, Caspase 1 antibody, Caspase-1 subunit p10 antibody, ICE antibody, IL-1 beta-converting enzyme antibody, IL-1BC antibody, IL1 beta converting enzyme antibody, IL1B convertase antibody, Interleukin 1 beta convertase antibody, Interleukin 1B converting enzyme antibody, Interleukin-1 beta convertase antibody, Interleukin-1 beta-converting enzyme antibody, p45 antibody

UniProt: [P29466](#)

Pathways: [Apoptosis](#), [Interferon-gamma Pathway](#), [Positive Regulation of Endopeptidase Activity](#), [Inflammasome](#)

Application Details

Application Notes: Recommended dilution: IHC:1:20-1:200,

Restrictions: For Research Use only

Handling

Format: Liquid

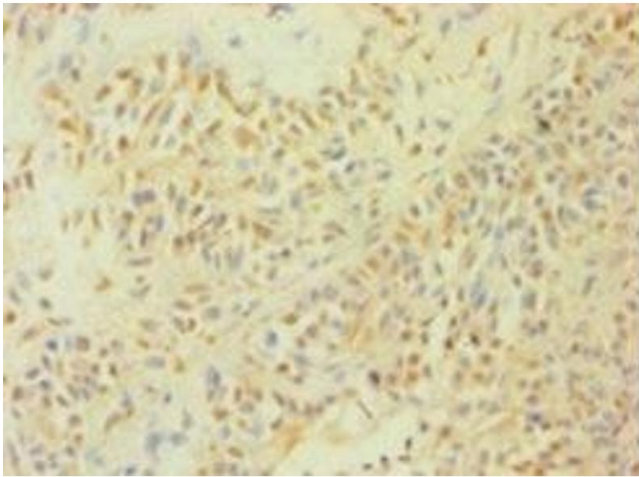
Buffer: Preservative: 0.03 % Proclin 300
Constituents: 50 % Glycerol, 0.01M PBS, PH 7.4

Preservative: ProClin

Precaution of Use: This product contains ProClin: a POISONOUS AND HAZARDOUS SUBSTANCE which should be handled by trained staff only.

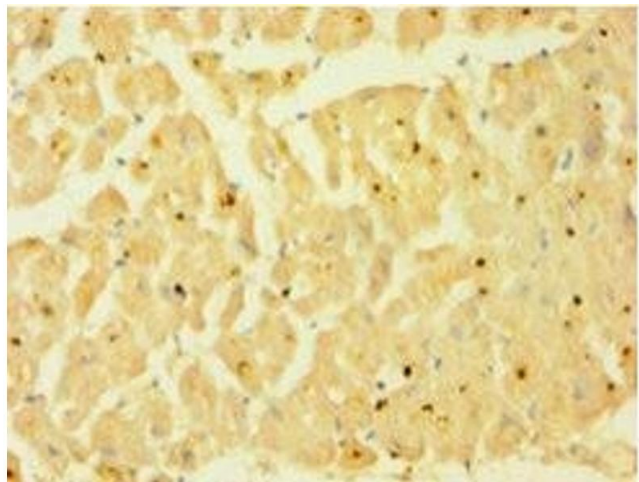
Storage: -20 °C,-80 °C

Storage Comment: Upon receipt, store at -20°C or -80°C. Avoid repeated freeze.



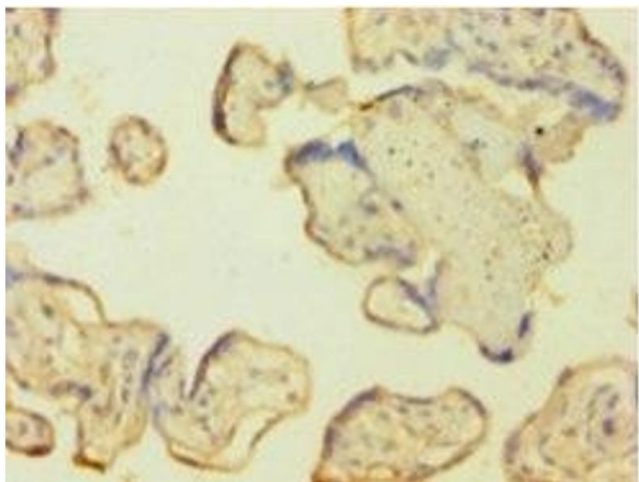
Immunohistochemistry

Image 1. Immunohistochemistry of paraffin-embedded human breast cancer using ABIN7146925 at dilution of 1:100



Immunohistochemistry

Image 2. Immunohistochemistry of paraffin-embedded human heart tissue using ABIN7146925 at dilution of 1:100



Immunohistochemistry

Image 3. Immunohistochemistry of paraffin-embedded human placenta tissue using ABIN7146925 at dilution of 1:100