



Datasheet for ABIN7146926  
**anti-Caspase 1 antibody (AA 120-269)**



[Go to Product page](#)

3 Images

Overview

Quantity:	100 µg
Target:	Caspase 1 (CASP1)
Binding Specificity:	AA 120-269
Reactivity:	Human
Host:	Rabbit
Clonality:	Polyclonal
Conjugate:	This Caspase 1 antibody is un-conjugated
Application:	Immunohistochemistry (IHC), ELISA, Immunofluorescence (IF)

Product Details

Immunogen:	Recombinant Human Caspase-1 protein (120-269AA)
Isotype:	IgG
Cross-Reactivity:	Human
Purification:	>95%, Protein G purified

Target Details

Target:	Caspase 1 (CASP1)
Alternative Name:	CASP1 ( <a href="#">CASP1 Products</a> )
Background:	Background: Thiol protease that cleaves IL-1 beta between an Asp and an Ala, releasing the mature cytokine which is involved in a variety of inflammatory processes. Important for defense

## Target Details

---

against pathogens. Cleaves and activates sterol regulatory element binding proteins (SREBPs).  
Can also promote apoptosis.

Aliases: CASP-1 antibody, CASP1 antibody, CASP1\_HUMAN antibody, Caspase 1 antibody, Caspase-1 subunit p10 antibody, ICE antibody, IL-1 beta-converting enzyme antibody, IL-1BC antibody, IL1 beta converting enzyme antibody, IL1B convertase antibody, Interleukin 1 beta convertase antibody, Interleukin 1B converting enzyme antibody, Interleukin-1 beta convertase antibody, Interleukin-1 beta-converting enzyme antibody, p45 antibody

---

UniProt: [P29466](#)

---

Pathways: [Apoptosis](#), [Interferon-gamma Pathway](#), [Positive Regulation of Endopeptidase Activity](#), [Inflammasome](#)

## Application Details

---

---

Application Notes: Recommended dilution: IHC:1:20-1:200, IF:1:50-1:500,

---

Restrictions: For Research Use only

## Handling

---

---

Format: Liquid

---

Buffer: Preservative: 0.03 % Proclin 300  
Constituents: 50 % Glycerol, 0.01M PBS, PH 7.4

---

Preservative: ProClin

---

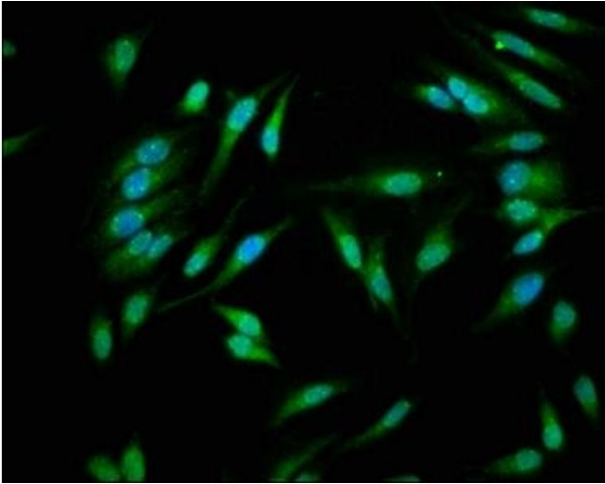
Precaution of Use: This product contains ProClin: a POISONOUS AND HAZARDOUS SUBSTANCE which should be handled by trained staff only.

---

Storage: -20 °C,-80 °C

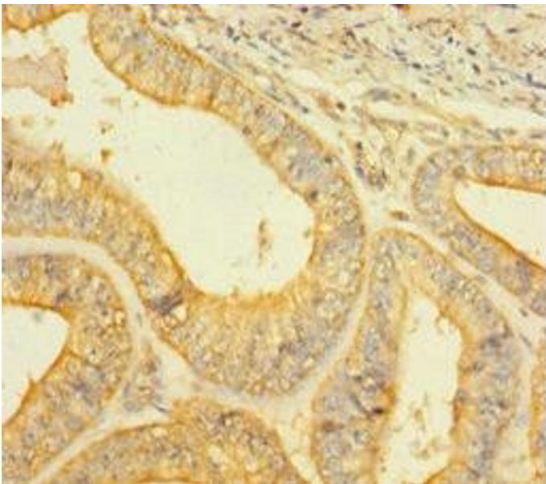
---

Storage Comment: Upon receipt, store at -20°C or -80°C. Avoid repeated freeze.



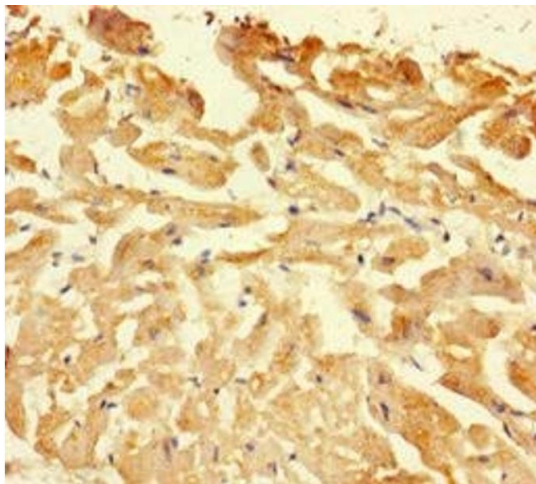
#### Immunofluorescence

**Image 1.** Immunofluorescence staining of HeLa cells with ABIN7146926 at 1:266, counter-stained with DAPI. The cells were fixed in 4% formaldehyde, permeabilized using 0.2% Triton X-100 and blocked in 10% normal Goat Serum. The cells were then incubated with the antibody overnight at 4°C. The secondary antibody was Alexa Fluor 488-conjugated AffiniPure Goat Anti-Rabbit IgG(H+L).



#### Immunohistochemistry

**Image 2.** Immunohistochemistry of paraffin-embedded human endometrial cancer using ABIN7146926 at dilution of 1:100



#### Immunohistochemistry

**Image 3.** Immunohistochemistry of paraffin-embedded human heart tissue using ABIN7146926 at dilution of 1:100