

Datasheet for ABIN7146938
anti-Caspase 2 antibody (AA 2-452)

2 Images

[Go to Product page](#)

Overview

Quantity:	100 µg
Target:	Caspase 2 (CASP2)
Binding Specificity:	AA 2-452
Reactivity:	Human
Host:	Rabbit
Clonality:	Polyclonal
Conjugate:	This Caspase 2 antibody is un-conjugated
Application:	ELISA, Immunohistochemistry (IHC), Immunofluorescence (IF)

Product Details

Immunogen:	Recombinant Human Caspase-2 protein (2-452AA)
Isotype:	IgG
Cross-Reactivity:	Human
Purification:	>95%, Protein G purified

Target Details

Target:	Caspase 2 (CASP2)
Alternative Name:	CASP2 (CASP2 Products)
Background:	Background: Involved in the activation cascade of caspases responsible for apoptosis execution. Might function by either activating some proteins required for cell death or

Target Details

inactivating proteins necessary for cell survival.

Aliases: CASP 2 antibody, CASP-2 antibody, Casp2 antibody, CASP2_HUMAN antibody, Caspase 2 antibody, Caspase 2 apoptosis related cysteine peptidase antibody, Caspase-2 subunit p12 antibody, Caspase2 antibody, ICH 1 antibody, ICH 1 protease antibody, ICH 1L antibody, ICH1 antibody, ICH1 protease antibody, ICH1L antibody, NEDD-2 antibody, NEDD2 antibody, Neural precursor cell expressed developmentally down-regulated protein 2 antibody, PPP1R57 antibody, Protease ICH-1 antibody, Protein phosphatase 1 regulatory subunit 57 antibody

UniProt: [P42575](#)

Pathways: [Apoptosis](#), [Caspase Cascade in Apoptosis](#), [Neurotrophin Signaling Pathway](#)

Application Details

Application Notes: Recommended dilution: IHC:1:1000-1:2000, IF:1:200-1:500,

Restrictions: For Research Use only

Handling

Format: Liquid

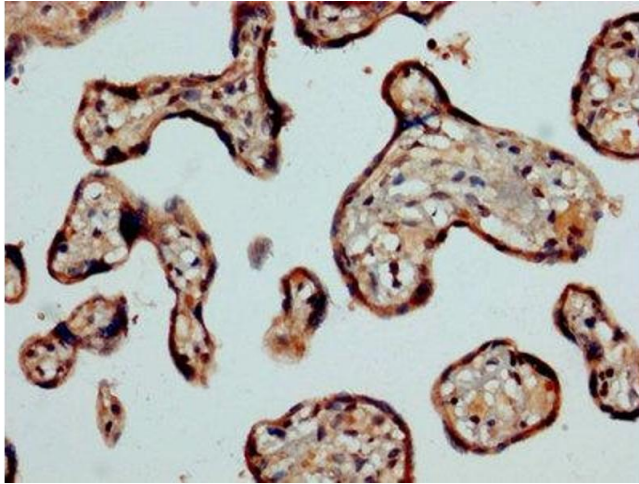
Buffer: Preservative: 0.03 % Proclin 300
Constituents: 50 % Glycerol, 0.01M PBS, PH 7.4

Preservative: ProClin

Precaution of Use: This product contains ProClin: a POISONOUS AND HAZARDOUS SUBSTANCE which should be handled by trained staff only.

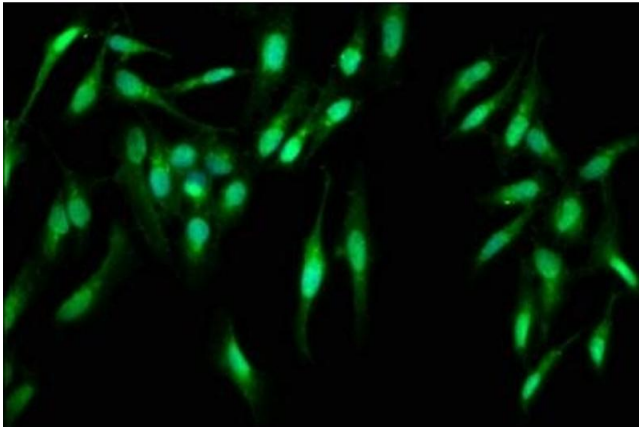
Storage: -20 °C, -80 °C

Storage Comment: Upon receipt, store at -20°C or -80°C. Avoid repeated freeze.



Immunohistochemistry

Image 1. IHC image of ABIN7146938 diluted at 1:1200 and staining in paraffin-embedded human placenta tissue performed on a Leica Bond™ system. After dewaxing and hydration, antigen retrieval was mediated by high pressure in a citrate buffer (pH 6.0). Section was blocked with 10% normal goat serum 30min at RT. Then primary antibody (1% BSA) was incubated at 4°C overnight. The primary is detected by a biotinylated secondary antibody and visualized using an HRP conjugated SP system.



Immunofluorescence

Image 2. Immunofluorescence staining of HeLa cells with ABIN7146938 at 1:400, counter-stained with DAPI. The cells were fixed in 4% formaldehyde, permeabilized using 0.2% Triton X-100 and blocked in 10% normal Goat Serum. The cells were then incubated with the antibody overnight at 4°C. The secondary antibody was Alexa Fluor 488-conjugated AffiniPure Goat Anti-Rabbit IgG(H+L).