

Datasheet for ABIN7146968
anti-Caspase 9 antibody (AA 113-324)



[Go to Product page](#)

3 Images

Overview

Quantity:	100 µL
Target:	Caspase 9 (CASP9)
Binding Specificity:	AA 113-324
Reactivity:	Human
Host:	Rabbit
Clonality:	Polyclonal
Conjugate:	This Caspase 9 antibody is un-conjugated
Application:	Western Blotting (WB), ELISA, Immunohistochemistry (IHC), Immunofluorescence (IF)

Product Details

Immunogen:	Recombinant Human Caspase-9 protein (113-324AA)
Isotype:	IgG
Cross-Reactivity:	Human, Mouse
Purification:	>95%, Protein G purified

Target Details

Target:	Caspase 9 (CASP9)
Alternative Name:	CASP9 (CASP9 Products)
Background:	Background: Involved in the activation cascade of caspases responsible for apoptosis execution. Binding of caspase-9 to Apaf-1 leads to activation of the protease which then

Target Details

cleaves and activates caspase-3. Promotes DNA damage-induced apoptosis in a ABL1/c-Abl-dependent manner. Proteolytically cleaves poly(ADP-ribose) polymerase (PARP).

Aliases: APAF-3 antibody, Apoptotic protease Mch-6 antibody, Apoptotic protease-activating factor 3 antibody, CASP-9 antibody, CASP9 antibody, CASP9_HUMAN antibody, Caspase 9 antibody, Caspase-9 subunit p10 antibody, ICE-LAP6 antibody, ICE-like apoptotic protease 6 antibody

UniProt: [P55211](#)

Pathways: [MAPK Signaling](#), [RTK Signaling](#), [Apoptosis](#), [Caspase Cascade in Apoptosis](#), [Fc-epsilon Receptor Signaling Pathway](#), [EGFR Signaling Pathway](#), [Neurotrophin Signaling Pathway](#), [Positive Regulation of Endopeptidase Activity](#)

Application Details

Application Notes: Recommended dilution: WB:1:1000-1:5000, IHC:1:200-1:500, IF:1:50-1:200,

Restrictions: For Research Use only

Handling

Format: Liquid

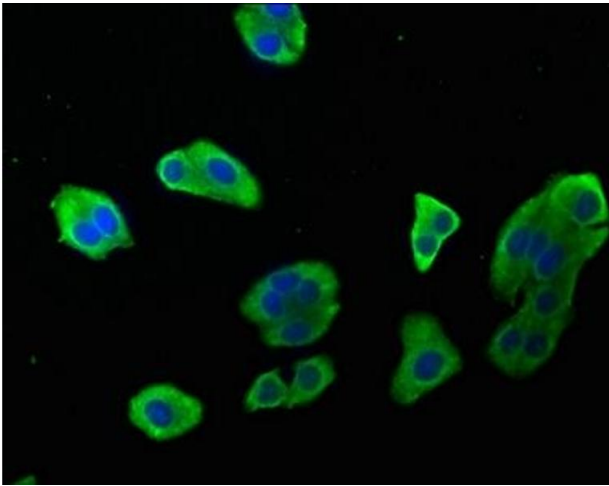
Buffer: Preservative: 0.03 % Proclin 300
Constituents: 50 % Glycerol, 0.01M PBS, pH 7.4

Preservative: ProClin

Precaution of Use: This product contains ProClin: a POISONOUS AND HAZARDOUS SUBSTANCE which should be handled by trained staff only.

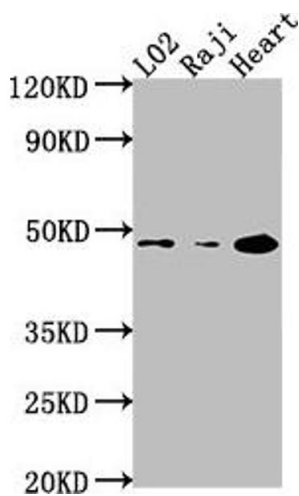
Storage: -20 °C,-80 °C

Storage Comment: Upon receipt, store at -20°C or -80°C. Avoid repeated freeze.



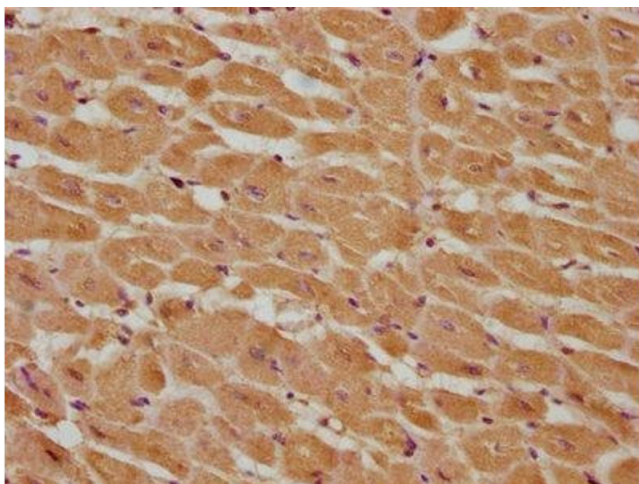
Immunofluorescence

Image 1. Immunofluorescence staining of HepG2 cells with ABIN7146968 at 1:142, counter-stained with DAPI. The cells were fixed in 4 % formaldehyde, permeabilized using 0.2 % Triton X-100 and blocked in 10 % normal Goat Serum. The cells were then incubated with the antibody overnight at 4 °C. The secondary antibody was Alexa Fluor 488-conjugated AffiniPure Goat Anti-Rabbit IgG(H+L).



Western Blotting

Image 2. Western Blot Positive WB detected in: L02 whole cell lysate, Raji whole cell lysate, Mouse heart tissue All lanes: CASP9 antibody at 1:2000 Secondary Goat polyclonal to rabbit IgG at 1/50000 dilution Predicted band size: 47, 31, 18, 37 kDa Observed band size: 47 kDa



Immunohistochemistry

Image 3. IHC image of ABIN7146968 diluted at 1:285 and staining in paraffin-embedded human heart tissue performed on a Leica Bond™ system. After dewaxing and hydration, antigen retrieval was mediated by high pressure in a citrate buffer (pH 6.0). Section was blocked with 10 % normal goat serum 30 min at RT. Then primary antibody (1 % BSA) was incubated at 4 °C overnight. The primary is detected by a biotinylated secondary antibody and visualized using an HRP conjugated SP system.