



Datasheet for ABIN7146972  
**anti-CTNNA1 antibody (AA 1-288)**



[Go to Product page](#)

3 Images

Overview

|                      |   |
|----------------------|---|
| Quantity:            | 100 µg  |
| Target:              | CTNNA1  |
| Binding Specificity: | AA 1-288  |
| Reactivity:          | Human   |
| Host:                | Rabbit  |
| Clonality:           | Polyclonal  |
| Conjugate:           | This CTNNA1 antibody is un-conjugated   |
| Application:         | Western Blotting (WB), Immunohistochemistry (IHC), ELISA, Immunofluorescence (IF) |

Product Details

|                   |   |
|-------------------|---|
| Immunogen:        | Recombinant Human Catenin alpha-1 protein (1-288AA) |
| Isotype:          | IgG   |
| Cross-Reactivity: | Human   |
| Purification:     | >95%, Protein G purified                            |

Target Details

|                   |  |
|-------------------|--|
| Target:           | CTNNA1   |
| Alternative Name: | CTNNA1 ( <a href="#">CTNNA1 Products</a> )   |
| Background:       | Background: Associates with the cytoplasmic domain of a variety of cadherins. The association of catenins to cadherins produces a complex which is linked to the actin filament network, and |

## Target Details

---

which seems to be of primary importance for cadherins cell-adhesion properties. Can associate with both E- and N-cadherins. Originally believed to be a stable component of E-cadherin/catenin adhesion complexes and to mediate the linkage of cadherins to the actin cytoskeleton at adherens junctions. In contrast, cortical actin was found to be much more dynamic than E-cadherin/catenin complexes and CTNNA1 was shown not to bind to F-actin when assembled in the complex suggesting a different linkage between actin and adherens junctions components. The homodimeric form may regulate actin filament assembly and inhibit actin branching by competing with the Arp2/3 complex for binding to actin filaments. May play a crucial role in cell differentiation.

Aliases: Alpha E-catenin antibody, Cadherin associated protein 102 kDa antibody, Cadherin associated protein antibody, Cadherin-associated protein antibody, CAP 102 antibody, CAP102 antibody, Catenin (cadherin associated protein) alpha 1 102 kDa antibody, Catenin (cadherin associated protein), alpha 1, 102 kDa antibody, Catenin alpha 1 antibody, Catenin alpha-1 antibody, CTNA1\_HUMAN antibody, CTNNA 1 antibody, Ctnna1 antibody, FLJ36832 antibody, FLJ52416 antibody, MDPT2 antibody, NY REN 13 antigen antibody, OTTHUMP00000224141 antibody, OTTHUMP00000224147 antibody, Renal carcinoma antigen NY REN 13 antibody, Renal carcinoma antigen NY-REN-13 antibody

---

UniProt: [P35221](#)

---

Pathways: [Regulation of Muscle Cell Differentiation](#), [Cell-Cell Junction Organization](#), [Maintenance of Protein Location](#)

## Application Details

---

Application Notes: Recommended dilution: WB:1:500-1:5000, IHC:1:1000-1:2000, IF:1:200-1:500,

---

Restrictions: For Research Use only

## Handling

---

Format: Liquid

---

Buffer: Preservative: 0.03 % Proclin 300  
Constituents: 50 % Glycerol, 0.01M PBS, PH 7.4

---

Preservative: ProClin

---

Precaution of Use: This product contains ProClin: a POISONOUS AND HAZARDOUS SUBSTANCE which should be handled by trained staff only.

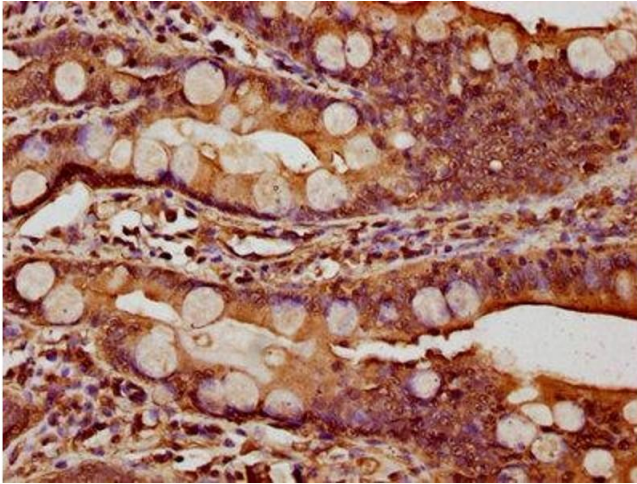
---

## Handling

Storage: -20 °C,-80 °C

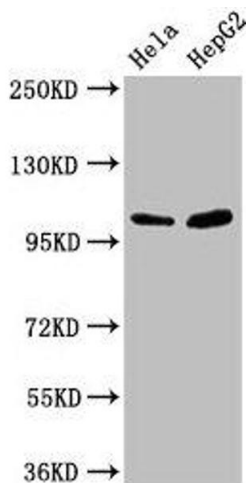
Storage Comment: Upon receipt, store at -20°C or -80°C. Avoid repeated freeze.

## Images



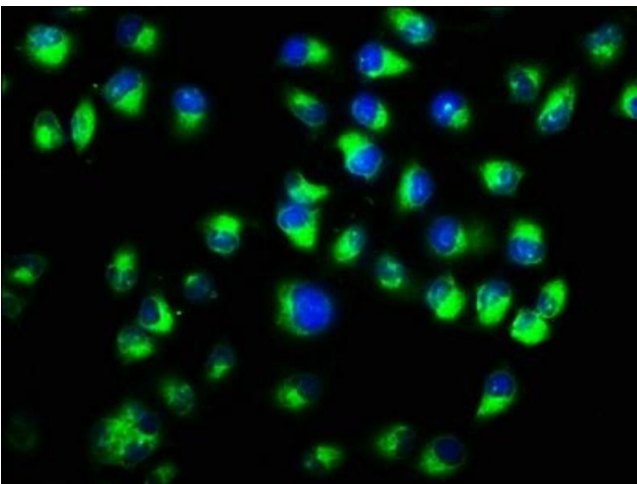
### Immunohistochemistry

**Image 1.** IHC image of ABIN7146972 diluted at 1:1000 and staining in paraffin-embedded human small intestine tissue performed on a Leica Bond™ system. After dewaxing and hydration, antigen retrieval was mediated by high pressure in a citrate buffer (pH 6.0). Section was blocked with 10% normal goat serum 30min at RT. Then primary antibody (1% BSA) was incubated at 4°C overnight. The primary is detected by a biotinylated secondary antibody and visualized using an HRP conjugated SP system.



### Western Blotting

**Image 2.** Western Blot Positive WB detected in: HeLa whole cell lysate, HepG2 whole cell lysate All lanes: CTNNA1 antibody at 3.3 µg/mL Secondary Goat polyclonal to rabbit IgG at 1/50000 dilution Predicted band size: 101, 103, 60 kDa Observed band size: 101 kDa



### Immunofluorescence

**Image 3.** Immunofluorescence staining of HeLa cells with ABIN7146972 at 1:333, counter-stained with DAPI. The cells were fixed in 4% formaldehyde, permeabilized using 0.2% Triton X-100 and blocked in 10% normal Goat Serum. The cells were then incubated with the antibody overnight at 4°C. The secondary antibody was Alexa Fluor 488-conjugated AffiniPure Goat Anti-Rabbit IgG(H+L).