



Datasheet for ABIN7147004
anti-Cathepsin E antibody (AA 59-155)



[Go to Product page](#)

1 Image

Overview

Quantity:	100 µg
Target:	Cathepsin E (CTSE)
Binding Specificity:	AA 59-155
Reactivity:	Human
Host:	Rabbit
Clonality:	Polyclonal
Conjugate:	This Cathepsin E antibody is un-conjugated
Application:	Immunohistochemistry (IHC), ELISA

Product Details

Immunogen:	Recombinant Human Cathepsin E protein (59-155AA)
Isotype:	IgG
Cross-Reactivity:	Human
Purification:	>95%, Protein G purified

Target Details

Target:	Cathepsin E (CTSE)
Alternative Name:	CTSE (CTSE Products)
Background:	Background: May have a role in immune function. Probably involved in the processing of antigenic peptides during MHC class II-mediated antigen presentation. May play a role in

Target Details

activation-induced lymphocyte depletion in the thymus, and in neuronal degeneration and glial cell activation in the brain.

Aliases: CATE antibody, CATE_HUMAN antibody, Cathepsin E antibody, Cathepsin E form II antibody, CTSE antibody, Erythrocyte membrane aspartic proteinase antibody, Slow moving proteinase antibody

UniProt: [P14091](#)

Application Details

Application Notes: Recommended dilution: IHC:1:20-1:200,

Restrictions: For Research Use only

Handling

Format: Liquid

Buffer: Preservative: 0.03 % Proclin 300
Constituents: 50 % Glycerol, 0.01M PBS, PH 7.4

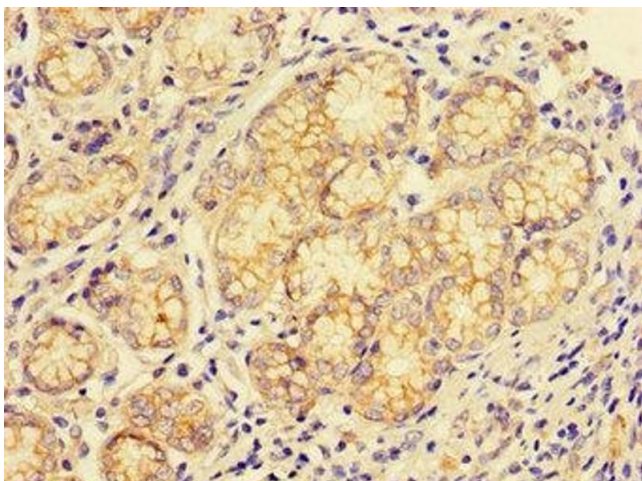
Preservative: ProClin

Precaution of Use: This product contains ProClin: a POISONOUS AND HAZARDOUS SUBSTANCE which should be handled by trained staff only.

Storage: -20 °C,-80 °C

Storage Comment: Upon receipt, store at -20°C or -80°C. Avoid repeated freeze.

Images



Immunohistochemistry

Image 1. Immunohistochemistry of paraffin-embedded human gastric cancer using ABIN7147004 at dilution of 1:100