



[Go to Product page](#)

Datasheet for ABIN7147012

anti-Cathepsin G antibody (AA 21-255)

1 Image

Overview

Quantity:	100 µL
Target:	Cathepsin G (CTSG)
Binding Specificity:	AA 21-255
Reactivity:	Human
Host:	Rabbit
Clonality:	Polyclonal
Conjugate:	This Cathepsin G antibody is un-conjugated
Application:	ELISA, Immunohistochemistry (IHC)

Product Details

Immunogen:	Recombinant Human Cathepsin G protein (21-255AA)
Isotype:	IgG
Cross-Reactivity:	Human
Purification:	Antigen Affinity Purified

Target Details

Target:	Cathepsin G (CTSG)
Alternative Name:	CTSG (CTSG Products)
Background:	Background: Serine protease with trypsin- and chymotrypsin-like specificity. Cleaves complement C3. Has antibacterial activity against the Gram-negative bacterium <i>P.aeruginosa</i> ,

Target Details

antibacterial activity is inhibited by LPS from *P.aeruginosa*, Z-Gly-Leu-Phe-CH₂Cl and phenylmethylsulfonyl fluoride.

Aliases: CATG antibody, CATG_HUMAN antibody, Cathepsin G antibody, Cathepsin G precursor antibody, CathepsinG antibody, CG antibody, Ctsg antibody, CTSG protein antibody, MGC23078 antibody

UniProt: [P08311](#)

Pathways: [ACE Inhibitor Pathway](#), [Peptide Hormone Metabolism](#), [Regulation of Systemic Arterial Blood Pressure by Hormones](#)

Application Details

Application Notes: Recommended dilution: IHC:1:20-1:200,

Restrictions: For Research Use only

Handling

Format: Liquid

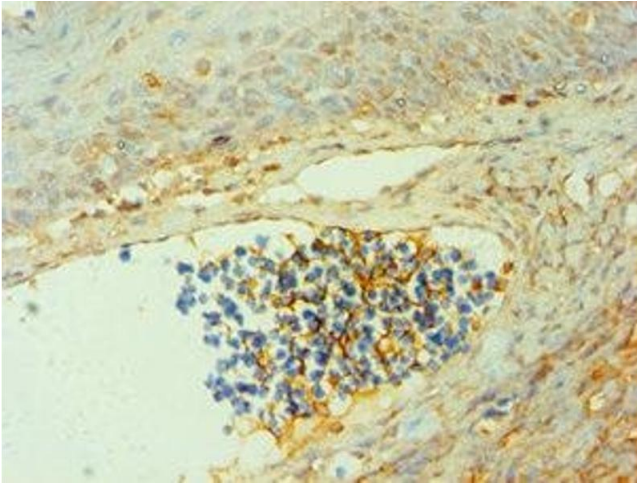
Buffer: PBS with 0.02 % sodium azide, 50 % glycerol, pH 7.3.

Preservative: Sodium azide

Precaution of Use: This product contains Sodium azide: a POISONOUS AND HAZARDOUS SUBSTANCE which should be handled by trained staff only.

Storage: -20 °C,-80 °C

Storage Comment: Upon receipt, store at -20°C or -80°C. Avoid repeated freeze.



Immunohistochemistry

Image 1. Immunohistochemistry of paraffin-embedded human tonsil tissue using ABIN7147012 at dilution of 1:100